

## UBA2 (SAE2) Protein

Full length recombinant protein expressed in Sf9 cells

**Catalog # U202-30G**

Lot # F519-1

### Product Description

Recombinant full-length human UBA2 (SAE2) was expressed by baculovirus in Sf9 insect cells using an N-terminal GST tag. The gene accession number is [NM\\_005499](#).

### Gene Aliases

UBA2; UBLE1B; SAE2; ARX; HRIHFB2115

### Formulation

Recombinant protein stored in 50mM Tris-HCl, pH 7.5, 50mM NaCl, 10mM glutathione, 0.1mM EDTA, 0.25mM DTT, 0.1mM PMSF, 25% glycerol.

### Storage and Stability

Store product at -70°C. For optimal storage, aliquot target into smaller quantities after centrifugation and store at recommended temperature. For most favorable performance, avoid repeated handling and multiple freeze/thaw cycles.

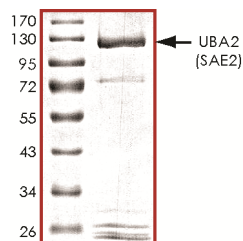
### Scientific Background

UBA2 (SAE2) or ubiquitin-like modifier activating enzyme 2 forms a heterodimer that functions as a SUMO-activating enzyme for the sumoylation of proteins. The posttranslational modification of proteins by the addition of the small protein SUMO or sumoylation, regulates protein structure and intracellular localization (1). UBA2 functions in SUMO1 activation in a manner analogous to the single E1 ubiquitin-activating enzymes (2). The inactivation of UBA2 may be a therapeutic strategy in MYC-driven cancers.

### References

- Okuma, T. et.al: In vitro SUMO-1 modification requires two enzymatic steps, E1 and E2. Biochem. Biophys. Res. Commun. 254: 693-698, 1999.
- Desterro, J. et. al: Identification of the enzyme required for activation of the small ubiquitin-like protein SUMO-1. J. Biol. Chem. 274: 10618-10624, 1999.

### Purity



The purity of UBA2 (SAE2) was determined to be **>85%** by densitometry. Approx. MW **115kDa**.

## UBA2 (SAE2) Protein

Full length recombinant protein expressed in Sf9 cells

Catalog Number	U202-30G
Specific Lot Number	F519-1
Purity	>85%
Concentration	0.1 µg/µl
Stability	1yr At -70°C from date of shipment
Storage & Shipping	Store product at -70°C. For optimal storage, aliquot target into smaller quantities after centrifugation and store at recommended temperature. For most favorable performance, avoid repeated handling and multiple freeze/thaw cycles. Product shipped on dry ice.

To place your order, please contact us by phone 1-(604)-232-4600, fax 1-604-232-4601 or by email: [orders@signalchem.com](mailto:orders@signalchem.com)  
[www.signalchem.com](http://www.signalchem.com)

**FOR IN VITRO RESEARCH PURPOSES ONLY. NOT INTENDED FOR USE IN HUMAN OR ANIMALS.**