

## CDK1, Unactive

Full-length recombinant protein expressed in Sf9 cells

Catalog # C22-14G

Lot # L013-1

### Product Description

Recombinant full-length human CDK1 was expressed by baculovirus in Sf9 insect cells using an N-terminal GST tag. The gene accession number is [NM\\_001786](#).

### Gene Aliases

CDC2

### Formulation

Recombinant protein stored in 50mM Tris-HCl, pH 7.5, 50mM NaCl, 0.25mM DTT, 0.1mM EDTA, 0.1mM PMSF, 25% glycerol.

### Storage and Stability

Store product at  $-70^{\circ}\text{C}$ . For optimal storage, aliquot target into smaller quantities after centrifugation and store at recommended temperature. For most favorable performance, avoid repeated handling and multiple freeze/thaw cycles.

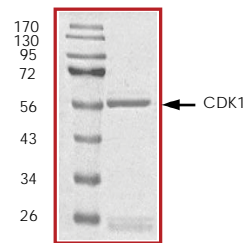
### Scientific Background

CDK1 or Cell Division Control protein 1 is essential for the completion of START, the controlling event in the cell cycle that is required to initiate mitosis. CDK1 is a catalytic subunit of a protein kinase complex, called the M-Phase Promoting Factor that induces entry into mitosis and is universal among eukaryotes (1). Phosphorylation of Bcl-2 in G2/M phase-arrested cells following photodynamic therapy with hypericin involves a CDK1-mediated signal and delays the onset of apoptosis. Therapeutic potential of CDK inhibitor NU2058 in androgen-independent prostate cancer has also been demonstrated (2).

### References

1. Vantieghem, A. et al: Phosphorylation of Bcl-2 in G2/M phase-arrested cells following photodynamic therapy with hypericin involves a CDK1-mediated signal and delays the onset of apoptosis. *J. Biol. Chem.* 2002; 277(40):37718-31.
2. Rigas, A.C. et al: Therapeutic potential of CDK inhibitor NU2058 in androgen-independent prostate cancer. *Oncogene.* 2007; 18.

### Purity



The purity was determined to be **>95%** by densitometry. Approx. MW **58kDa**.

## CDK1, Unactive

Full-length recombinant protein expressed in Sf9 cells

Catalog Number C22-14G

Specific Lot Number L013-1

Purity	>95%
Concentration	0.2 $\mu\text{g}/\mu\text{l}$
Stability	1yr At $-70^{\circ}\text{C}$ from date of shipment
Storage & Shipping	Store product at $-70^{\circ}\text{C}$ . For optimal storage, aliquot target into smaller quantities after centrifugation and store at recommended temperature. For most favorable performance, avoid repeated handling and multiple freeze/thaw cycles. Product shipped on dry ice.

To place your order, please contact us by phone 1-(604)-232-4600, fax 1-604-232-4601 or by email: [orders@signalchem.com](mailto:orders@signalchem.com)  
[www.signalchem.com](http://www.signalchem.com)

**FOR IN VITRO RESEARCH PURPOSES ONLY. NOT INTENDED FOR USE IN HUMAN OR ANIMALS.**