

## Anti-Myc

Mouse Monoclonal Antibody

**Catalog # M86-61M**

Lot # L340-3

### Cited Applications

- Western blot (1:1000)
- ELISA
- Immunostaining
- Immunoprecipitation

*Ideal working dilutions for each application should be empirically determined by the investigator.*

### Specificity

Recognizes the Myc tag

### Cross Reactivity

- All proteins tagged with Myc

### Host/Isotype/Clone#

Mouse, IgG1, M19

### Immunogen

EQKLISEED peptide conjugated to KLH

### Formulation

10mM PBS pH 7.2

### Stability

Store at 4°C (add 0.1% NaN<sub>3</sub>) for several months, and at -20°C for longer periods. For optimal storage, aliquot target into smaller quantities after centrifugation and store at recommended temperature. For optimal performance, avoid repeated handling and multiple freeze/thaw cycles.

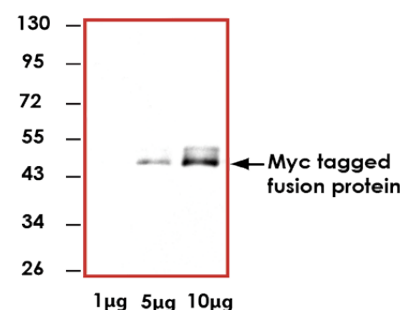
### Scientific Background

The Myc epitope tag (EQKLISEEDL sequence) is highly charged and consists of ten amino acids derived from the Myc protooncogene. The cMyc protooncogene is a transcription factor regulating approximately 15% of genes, and is involved in cell proliferation, differentiation, and apoptosis.

### References

1. Jarvik, JW, and Telmer, CA. Epitope tagging, Annual Review of Genetics, 1998; 32, 601-618
2. Gearhart, J, et al: Advances in Stem-Cell Research, N Engl J Med, 2007; 357: 1469-1472

### Sample Data



Representative western blot with Anti-Myc (1:1000) using 1 µg, 5 µg, and 10 µg of cell lysate transfected with a 52 kDa Myc tagged fusion protein.

## Anti-Myc

Mouse Monoclonal Antibody

Catalog Number	M86-61M
Specific Lot Number	L340-3
Purification	Affinity purified using Protein A
Concentration	1.0 µg/µL
Stability	1yr At -20°C from date of shipment
Storage & Shipping	Store product at -20°C. For optimal storage, aliquot antibody into smaller quantities after centrifugation and store at recommended temperature. For optimal performance, avoid repeated handling and multiple freeze/thaw cycles. Product shipped on ice packs.

To place your order, please contact us by phone 1-(604)-232-4600, fax 1-604-232-4601 or by email: [orders@signalchem.com](mailto:orders@signalchem.com)  
[www.signalchem.com](http://www.signalchem.com)

**FOR IN VITRO RESEARCH PURPOSES ONLY. NOT INTENDED FOR USE IN HUMAN OR ANIMALS.**