

Anti-APC7

Rabbit Polyclonal Antibody

Catalog # A93-363R

Lot # O2361-10

Cited Applications

E, WB, IF

Ideal working dilutions for each application should be empirically determined by the investigator.

Specificity

Recognizes the APC7 protein

Cross Reactivity

Human, Mouse and Rat

Host/Isotype/Clone#

Rabbit, IgG

Immunogen

APC7 antibody was raised against an 18 amino acid synthetic peptide near the carboxy terminus of human APC7

Formulation

PBS + 0.02% sodium azide.

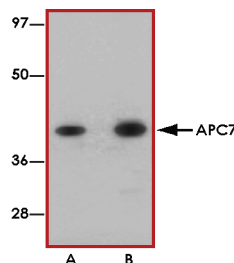
Stability

1yr at -20°C from date of shipment.

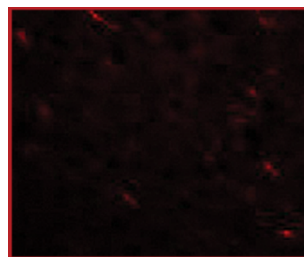
References

1. Peters JM: The anaphase promoting complex/cyclosome: a machine designed to destroy. Nat. Rev. Mol. Cell Biol.2006; 7:644-56.
2. Jorgensen PM et al: Characterisation of the human APC1, the largest subunit of the anaphase-promoting complex. Gene2001; 262:51-9.

Sample Data



Western blot analysis of APC7 in rat kidney tissue lysate with APC7 antibody at (A) 1 and (B) 2 µg/mL.



Immunofluorescence of APC7 in rat kidney tissue with APC7 antibody at 20 µg/mL.

Anti-APC7

Rabbit Polyclonal Antibody

Catalog Number

A93-363R

Specific Lot Number

O2361-10

Purification

Affinity chromatography

Stability

1yr at -20°C from date of shipment

Storage & Shipping

Store product at -20°C. For optimal storage, aliquot antibody into smaller quantities after centrifugation and store at recommended temperature. For optimal performance, avoid repeated handling and multiple freeze/thaw cycles. Product shipped on ice packs.

To place your order, please contact us by phone 1-(604)-232-4600, fax 1-604-232-4601 or by email: orders@signalchem.com
www.signalchem.com

FOR IN VITRO RESEARCH PURPOSES ONLY. NOT INTENDED FOR USE IN HUMAN OR ANIMALS.