

## Anti-p57KIP2

Rabbit Polyclonal Antibody

**Catalog # C29-363R**

Lot # O2361-35

### Cited Applications

E, WB, IF

*Ideal working dilutions for each application should be empirically determined by the investigator.*

### Specificity

Recognizes the p57KIP2 protein

### Cross Reactivity

Human, Mouse and Rat

### Host/Isotype/Clone#

Rabbit, IgG

### Immunogen

p57KIP2 antibody was raised against a 17 amino acid synthetic peptide near the amino terminus of human p57KIP2

### Formulation

PBS + 0.02% sodium azide.

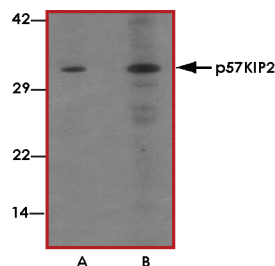
### Stability

1yr at -20°C from date of shipment.

### References

1. Lee MH et al: Cloning of p57KIP2, a cyclin-dependent kinase inhibitor with unique domain structure and tissue distribution. *Genes Dev.* 1995; 9:639-49.
2. Pateras IS et al: p57KIP2: "Kip"ing the cell under control. *Mol. Cancer Res.* 2009; 1902-19
3. Hatada I et al: An imprinted p57KIP2 is mutated in Beckwith-Wiedemann syndrome. *Nat. Genet.* 1996; 14:171-3.

### Sample Data



Western blot analysis of p57KIP2 in 293 cell lysate with p57KIP2 antibody at (A) 1 and (B) 2 µg/mL.

## Anti-p57KIP2

Rabbit Polyclonal Antibody

Catalog Number

C29-363R

Specific Lot Number

O2361-35

Purification

Affinity chromatography

Stability

1yr at -20°C from date of shipment

Storage & Shipping

Store product at -20°C. For optimal storage, aliquot antibody into smaller quantities after centrifugation and store at recommended temperature. For optimal performance, avoid repeated handling and multiple freeze/thaw cycles. Product shipped on ice packs.

To place your order, please contact us by phone 1-(604)-232-4600, fax 1-604-232-4601 or by email: [orders@signalchem.com](mailto:orders@signalchem.com)  
[www.signalchem.com](http://www.signalchem.com)

**FOR IN VITRO RESEARCH PURPOSES ONLY. NOT INTENDED FOR USE IN HUMAN OR ANIMALS.**