

Anti-Rabbit HRP

Goat Polyclonal Antibody

Catalog # G33-62G-1000

Lot # Q356-4

Cited Applications

- Western blot (1:2000) - ELISA
(2% skim milk blocking solution is recommended)

Ideal working dilutions for each application should be empirically determined by the investigator.

Specificity

Recognizes IgG and IgM from Rabbit

Cross Reactivity

- Western blot using rabbit primary antibodies

Other immunoglobulins may also be detectable

Host

Goat

Immunogen

Affinity purified rabbit immunoglobulins

Formulation

PBS pH 7.2, 50% Glycerol

Stability

Store at 4°C for several months and at -20°C for longer periods; do not add NaN₃ as this will inhibit the HRP enzyme. For optimal storage, aliquot target into smaller quantities after centrifugation and store at recommended temperature. For optimal performance, avoid repeated handling and multiple freeze/thaw cycles.

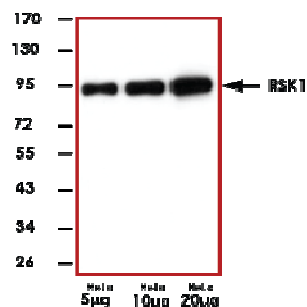
Scientific Background

Affinity purified rabbit immunoglobulins were used to raise goat antibodies specific to the rabbit IgG. The affinity purified antibodies are then conjugated to horse radish peroxidase (HRP) by reductive amination in a 2:1 molar ratio. The HRP conjugated secondary antibody can recognize the primary immunoglobulin and give a signal in the presence of a chemiluminescent substrate. The signal can be detected using an electronic imager or autoradiography film (1).

References

1. Nakane PK, Pierce GB: Enzyme-labeled antibodies: preparation and application for localization of antigens, *J Histochem Cytochem* 1966, 14:929

Sample Data



Representative western blot with a rabbit polyclonal RSK1 antibody and Anti-Rabbit HRP(1:2000) using 5 µg, 10 µg, and 20 µg HeLa cell lysate.

Anti-Rabbit HRP

Goat Polyclonal Antibody

Catalog Number G33-62G-1000

Quantity 1 ml

Specific Lot Number Q356-4

Purification Affinity purified

Format 1 mg in 1 ml

Concentration 1.0 µg/µL

Stability 1yr at -20°C from date of shipment

Storage & Shipping Store product at -20°C. For optimal storage, aliquot antibody into smaller quantities after centrifugation and store at recommended temperature. For optimal performance, avoid repeated handling and multiple freeze/thaw cycles. Product shipped on ice packs.

To place your order, please contact us by phone 1-(604)-232-4600, fax 1-604-232-4601 or by email: orders@signalchem.com

www.signalchem.com

FOR IN VITRO RESEARCH PURPOSES ONLY. NOT INTENDED FOR USE IN HUMAN OR ANIMALS.