

## BCL2 Protein

Full-length recombinant protein expressed in E. coli cells

**Catalog # B25-30G**

Lot # R195-7

### Product Description

Recombinant full-length human BCL2 was expressed in E. coli cells using an N-terminal GST tag. The gene accession number is [NM\\_000633](#).

### Gene Aliases

Bcl-2

### Formulation

Recombinant protein stored in 50mM Tris-HCl, pH 7.5, 150mM NaCl, 10mM glutathione, 0.1mM EDTA, 0.25mM DTT, 0.1mM PMSF, 25% glycerol.

### Storage and Stability

Store product at -70°C. For optimal storage, aliquot target into smaller quantities after centrifugation and store at recommended temperature. For most favorable performance, avoid repeated handling and multiple freeze/thaw cycles.

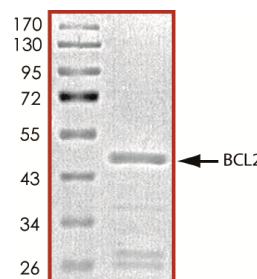
### Scientific Background

BCL2 gene encodes an integral inner mitochondrial membrane protein that acts as an antiapoptotic protein (1). The protein BAD can antagonize both the cell cycle and antiapoptotic functions of BCL2 through binding to the BH3 domain. Constitutive expression of BCL2, such as in the case of translocation of BCL2 to Ig heavy chain locus, is thought to be the cause of follicular lymphoma (2). BCL2 is phosphorylated on specific serine/threonine residues within the unstructured loop in response to diverse stimuli and such phosphorylation has been associated with the loss of the biological function of BCL2.

### References

1. Hockenbery, D. et al: Bcl-2 is an inner mitochondrial membrane protein that blocks programmed cell death. Nature 348: 334-336, 1990.
2. Tsujimoto, Y. et al: Involvement of the bcl-2 gene in human follicular lymphoma. Science 228: 1440-1443, 1985.

### Purity



The purity was determined to be **>80%** by densitometry. Approx. MW **51kDa**.

## BCL2 Protein

Full-length recombinant protein expressed in E. coli cells

Catalog Number	B25-30G
Specific Lot Number	R195-7
Purity	>80%
Concentration	0.2 µg/µl
Stability	1yr at -70°C from date of shipment
Storage & Shipping	Store product at -70°C. For optimal storage, aliquot target into smaller quantities after centrifugation and store at recommended temperature. For most favorable performance, avoid repeated handling and multiple freeze/thaw cycles. Product shipped on dry ice.

To place your order, please contact us by phone 1-(604)-232-4600, fax 1-604-232-4601 or by email: [orders@signalchem.com](mailto:orders@signalchem.com)  
[www.signalchem.com](http://www.signalchem.com)

**FOR IN VITRO RESEARCH PURPOSES ONLY. NOT INTENDED FOR USE IN HUMAN OR ANIMALS.**