

LMTK2 Protein

Recombinant human protein expressed in Sf9 cells

Catalog # L07-35G

Lot # A1134-2

Product Description

Recombinant human LMTK2 (66-583) was expressed by baculovirus in Sf9 insect cells using an N-terminal GST tag. This gene accession number is [NM_014916](#).

Gene Aliases

AATYK2; BREK; cprk; KPI-2; KPI2; LMR2; KIAA1079

Formulation

Recombinant protein stored in 50mM Tris-HCl, pH 7.5, 50mM NaCl, 10mM glutathione, 0.1mM EDTA, 0.25mM DTT, 0.1mM PMSF, 25% glycerol.

Storage and Stability

Store product at -70°C. For optimal storage, aliquot target into smaller quantities after centrifugation and store at recommended temperature. For most favorable performance, avoid repeated handling and multiple freeze/thaw cycles.

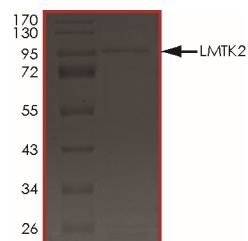
Scientific Background

LMTK2 or lemur tyrosine kinase belongs to the protein kinase superfamily and the protein tyrosine kinase family which contains N-terminal transmembrane helices and a long C-terminal cytoplasmic tail with serine/threonine/tyrosine kinase activity. LMTK2 can associate with PPP1CA and PPP1R2 to form a membrane-localized regulatory complex (1). LMTK2 is highly expressed in all specific adult brain regions, particularly in thalamus, amygdala, cerebellum, and caudate nucleus (2). LMTK2 protein involves in nerve growth factor (NGF)-TrkA signalling, and also plays a critical role in endosomal membrane trafficking. sine kinase 2.

References

1. Wang, H.et.al: A novel transmembrane ser/thr kinase complexes with protein phosphatase-1 and inhibitor-2. J. Biol. Chem. 277: 49605-49612, 2002.
2. Kikuno, R.et.al: Prediction of the coding sequences of unidentified human genes. XIV. The complete sequences of 100 new cDNA clones from brain which code for large proteins in vitro. DNA Res. 6: 197-205, 1999.

Purity



The purity of LMTK2 protein was determined to be **>80%** by densitometry. Approx. MW **96 kDa**.

LMTK2 Protein

Recombinant human protein expressed in Sf9 cells

Catalog #	L07-35G
Lot #	A1134-2
Purity	>80%
Concentration	0.1 µg/µl
Stability	1yr at -70°C from date of shipment
Storage & Shipping	Store product at -70°C. For optimal storage, aliquot target into smaller quantities after centrifugation and store at recommended temperature. For most favorable performance, avoid repeated handling and multiple freeze/thaw cycles. Product shipped on dry ice.

To place your order, please contact us by phone 1-(604)-232-4600, fax 1-604-232-4601 or by email: orders@signalchem.com
www.signalchem.com

FOR IN VITRO RESEARCH PURPOSES ONLY. NOT INTENDED FOR USE IN HUMAN OR ANIMALS.