

ASH2L Protein

Full-length recombinant human protein expressed in E. coli cells

Catalog # A372-30BG

Lot # B2022-9

Product Description

Full-length recombinant human ASH2L was expressed in E. coli cells using an N-terminal GST tag. The gene accession number is [BC015936](#).

Gene Aliases

ASH2L2

Formulation

Recombinant protein stored in 50mM Tris-HCl, pH 7.5, 150mM NaCl, 10mM glutathione, 0.1mM EDTA, 0.25mM DTT, 0.1mM PMSF, 25% glycerol.

Storage and Stability

Store product at -70°C. For optimal storage, aliquot target into smaller quantities after centrifugation and store at recommended temperature. For most favorable performance, avoid repeated handling and multiple freeze/thaw cycles.

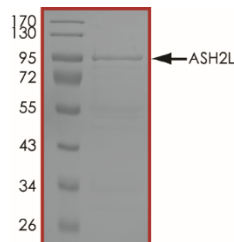
Scientific Background

Set1/Ash2 histone methyltransferase complex subunit ASH2 (ASH2L) is part of MLL complexes, consisting of one of seven Set1/MLL proteins (SETA, SETB, MLL1 to 5), ASH2L, RBBP5, WDR5, HDPY-30, and others. Possesses histone methyltransferase activity. Specifically methylates 'Lys-4' of histone H3 when the neighboring 'Lys-9' residue is not methylated.

References

1. Patel A, et al: On the mechanism of multiple lysine methylation by the human mixed lineage leukemia protein-1 (MLL1) core complex. J Biol Chem. 2009 284(36):24242-56.
2. Qi J, et al: Absent, small or homeotic 2-like protein (ASH2L) enhances the transcription of the estrogen receptor a gene through GATA-binding protein 3 (GATA3). J Biol Chem. 2014 289(45):31373-81.

Purity



The purity of ASH2L was determined to be **>70%** by densitometry. Approx. MW **94 kDa**.

ASH2L Protein

Full-length recombinant human protein expressed in E. coli cells

Catalog #	A372-30BG
Lot #	B2022-9
Purity	>70%
Concentration	0.1 µg/µl
Stability	1yr At -70°C from date of shipment
Storage & Shipping	Store product at -70°C. For optimal storage, aliquot target into smaller quantities after centrifugation and store at recommended temperature. For most favorable performance, avoid repeated handling and multiple freeze/thaw cycles. Product shipped on dry ice.

To place your order, please contact us by phone 1-(604)-232-4600, fax 1-604-232-4601 or by email: orders@signalchem.com
www.signalchem.com

FOR IN VITRO RESEARCH PURPOSES ONLY. NOT INTENDED FOR USE IN HUMAN OR ANIMALS.