

## Anti-HDAC4

Rabbit Polyclonal Antibody

**Catalog # H86-63BR**

Lot # B3216-45

### Cited Applications

ELISA, IF, IC, WB

*Ideal working dilutions for each application should be empirically determined by the investigator.*

### Specificity

Recognizes the HDAC4 protein

### Cross Reactivity

Human, Mouse, Rat and Primate

### Host/Isotype/Clone#

Rabbit, IgG

### Immunogen

The antibody was produced against synthesized peptide corresponding to the internal region surrounding 600-650 aa of human HDAC4 protein

### Formulation

0.02 M Potassium Phosphate, 0.15 M Sodium Chloride, pH 7.2 + 50% (v/v) Glycerol

### Stability

1yr at -20°C from date of shipment

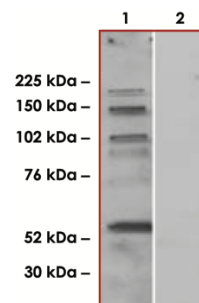
### Scientific Background

HDAC4 or Histone Deacetylase 4 belongs to class II of the histone deacetylase/acuc/apha family and is a component of the histone deacetylase complex that represses transcription when tethered to a promoter. HDAC4 does not bind DNA directly, but through transcription factors MEF2C and MEF2D. Binding of the N terminus of HDAC4 to MEF2C represses MEF2C transcription activity. The catalytic domain of HDAC4 interacts with HDAC3 via the transcriptional corepressor NCOR2. Suppression of HDAC4 binding to NCOR2 and to HDAC3 results in loss of enzymatic activity associated with HDAC4.

### References:

1. Wang, A. H. et al: HDAC4, a human histone deacetylase related to yeast HDA1, is a transcriptional corepressor. *Molec. Cell. Biol.* 1999; 19; 7816-7827
2. Fischle, W. et al: Enzymatic activity associated with class II HDACs is dependent on a multiprotein complex containing HDAC3 and SMRT/N-CoR. *Molec. Cell* 2002; 9; 45-57

### Sample Data



Western Blot of Anti-HDAC4 antibody (1:400). Lane 1: Mouse brain homogenate. Lane 2: Mouse brain homogenate blocked with peptide. Load: 30 µg per lane.

## Anti-HDAC4

Rabbit Polyclonal Antibody

Catalog # **H86-63BR**

Lot # **B3216-45**

Purification

Stability

Storage & Shipping

Immunoaffinity chromatography

1yr at -20°C from date of shipment

Store product at -20°C. For optimal storage, aliquot antibody into smaller quantities after centrifugation and store at recommended temperature. For optimal performance, avoid repeated handling and multiple freeze/thaw cycles. Product shipped on ice packs.