

Anti-Phospho-STAT2 (Tyr690)

Rabbit Polyclonal Antibody

Catalog # S53-365R

Lot # B3216-82

Cited Applications

ELISA, WB

Ideal working dilutions for each application should be empirically determined by the investigator.

Specificity

Recognizes the human STAT2 protein phosphorylated at Tyrosine 690

Cross Reactivity

Human, Chimpanzee, Macaque, Vervet Monkey, Rat, Dog, Pig, Horse, Mouse and Bovine

Host/Isotype/Clone#

Rabbit, IgG

Immunogen

The antibody was produced against synthesized peptide corresponding to a region near the N-Terminus of human STAT2 protein

Formulation

0.02 M Potassium Phosphate, 0.15 M Sodium Chloride, pH 7.2 + 0.01% (w/v) Sodium Azide

Stability

1yr at -20°C from date of shipment

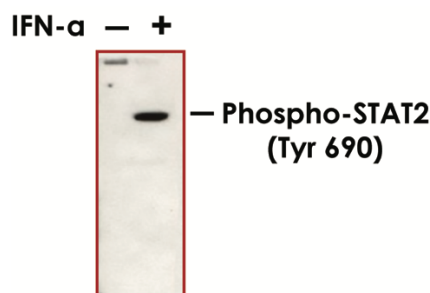
Scientific Background

STAT2 (Signal transducer and activator of transcription) is a family member of STAT transcription factors that are implicated in programming gene expression in biological events as diverse as embryonic development, programmed cell death, organogenesis, innate immunity, adaptive immunity and cell growth regulation (1). JAKs can phosphorylate and activate STATs. Activation of the JAK/STAT pathway in response to cytokine action can lead to regulation of gene expression during proliferation and differentiation of the immune cells. STATs have been shown to be involved in inflammation, autoimmune and allergic diseases (2).

References:

1. Horvath, C.M.: STAT proteins and transcriptional responses to extracellular signals. Trends Biochem Sci. 2000 Oct;25(10):496-502.
2. Pfitzner, E. et al: The role of STATs in inflammation and inflammatory diseases. Curr Pharm Des. 2004;10(23):2839-50.

Sample Data



Western blot using Anti-Phospho-STAT2 (Tyr690) antibody (1:1,000 dilution) shows detection of Stat2pY690 protein (arrowhead) in Jurkat cells without (left lane) and with (right lane) 1000U/mL of IFN-α for 15 min at 37°C.

Anti-Phospho-STAT2 (Tyr690)

Rabbit Polyclonal Antibody

Catalog #	S53-365R
Lot #	B3216-82
Purification	Affinity chromatography
Stability	1yr at -20°C from date of shipment
Storage & Shipping	Store product at -20°C. For optimal storage, aliquot antibody into smaller quantities after centrifugation and store at recommended temperature. For optimal performance, avoid repeated handling and multiple freeze/thaw cycles. Product shipped on ice packs.

To place your order, please contact us by phone 1-(604)-232-4600, fax 1-604-232-4601 or by email: orders@signalchem.com
www.signalchem.com

FOR IN VITRO RESEARCH PURPOSES ONLY. NOT INTENDED FOR USE IN HUMAN OR ANIMALS.