

COT, Unactive

Recombinant human protein expressed in Sf9 cells

Catalog # M16-15G

Lot # C269-2

Product Description

Recombinant human COT (30-397) was expressed by baculovirus in Sf9 insect cells using an N-terminal GST tag. The gene accession number is [NM_005204](#).

Gene Aliases

MAP3K8, EST, ESTF, TPL2, Tpl-2, c-COT, FLJ10486

Formulation

Recombinant protein stored in 50mM Tris-HCl, pH 7.5, 50mM NaCl, 0.25mM DTT, 0.1mM EGTA, 0.1mM EDTA, 0.1mM PMSF, 25% glycerol.

Storage and Stability

Store product at -70°C. For optimal storage, aliquot target into smaller quantities after centrifugation and store at recommended temperature. For most favorable performance, avoid repeated handling and multiple freeze/thaw cycles.

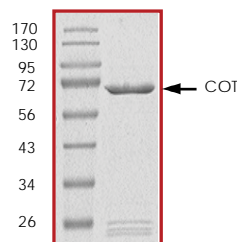
Scientific Background

COT is an oncogene that can activate both the MAP kinase and JNK kinase pathways. COT activates IκB kinases and induces the nuclear production of NF-κB. C-terminal catalytic domain of KSR2 associates with COT and KSR2 can negatively regulate the kinase activity of COT in vitro. Co-transfection of KSR2 with COT in cells leads to reduced COT-mediated ERK activation and COT-induced IL8 production in a dose-dependent manner (1). COT is one of the MAP kinase kinases that regulates the ERK1/ERK2 pathway in response to IL-1. Blockage of expression of COT results in failure of IL-1 to induce an increase in IL-8 and MIP-1β mRNA levels (2).

References

1. Channavajhala, P L. et al: Identification of a novel human kinase supporter of Ras (hKSR-2) that functions as a negative regulator of Cot (Tpl2) signaling. J. Biol. Chem. 278: 47089-47097, 2003.
2. Rodriguez C. et al: TRAF6 and Src kinase activity regulates Cot activation by IL-1. Cell Signal. 2006 Sep;18(9):1376-85.

Purity



The purity was determined to be **>90%** by densitometry. Approx. MW **70kDa**.

COT, Unactive

Recombinant human protein expressed in Sf9 cells

Catalog Number

M16-15G

Specific Lot Number

C269-2

Purity

>90%

Concentration

0.2 µg/µl

Stability

1yr At -70°C from date of shipment

Storage & Shipping

Store product at -70°C. For optimal storage, aliquot target into smaller quantities after centrifugation and store at recommended temperature. For most favorable performance, avoid repeated handling and multiple freeze/thaw cycles. Product shipped on dry ice.

To place your order, please contact us by phone 1-(604)-232-4600, fax 1-604-232-4601 or by email: orders@signalchem.com
www.signalchem.com

FOR IN VITRO RESEARCH PURPOSES ONLY. NOT INTENDED FOR USE IN HUMAN OR ANIMALS.