

Anti- β -Actin

Rabbit Polyclonal Antibody

Catalog # A03-63BR

Lot # D339-6

Cited Applications

- Western blot (1:1000)

Ideal working dilutions for each application should be empirically determined by the investigator.

Specificity

Recognizes the β -actin protein

Cross Reactivity

- Western blot β -actin from human and mouse cells

β -actin from other species may also be detectable

Host

Rabbit

Immunogen

Protein Code: P60709

Formulation

TBS, 50% glycerol

Stability

Store at 4°C (add 0.1% NaN₃) for several months, and at -20°C for longer periods. For optimal storage, aliquot target into smaller quantities after centrifugation and store at recommended temperature. For optimal performance, avoid repeated handling and multiple freeze/thaw cycles.

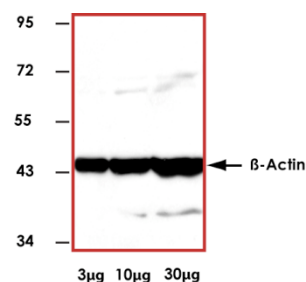
Scientific Background

Actin, a ubiquitous protein in eukaryotes, is the major component of the cytoskeleton. At least six isoforms are known in mammals. Nonmuscle β - and γ -actin, also known as cytoplasmic actin, are predominantly expressed in nonmuscle cells, controlling cell structure and motility (1). α -cardiac and α -skeletal actin are expressed in striated cardiac and skeletal muscles, respectively; two smooth muscle actins, α - and γ -actin, are found primarily in vascular smooth muscle and enteric smooth muscle, respectively. These actin isoforms regulate contractile potentials for muscle cells (1).

References

1. Herman, I.M. (1993) *Curr. Opin. Cell Biol.* 5, 48-55.

Sample Data



Representative western blot with Anti- β -Actin (1:1000) using 3 μ g, 10 μ g, and 30 μ g of THP1 cell lysate.

Anti- β -Actin

Rabbit Polyclonal Antibody

Catalog Number

A03-63BR

Specific Lot Number

D339-6

Purification

Affinity Chromatography

Concentration

1.0 μ g/ μ L

Stability

1yr At -20°C from date of shipment

Storage & Shipping

Store product at -20°C. For optimal storage, aliquot antibody into smaller quantities after centrifugation and store at recommended temperature. For optimal performance, avoid repeated handling and multiple freeze/thaw cycles. Product shipped on ice packs.

To place your order, please contact us by phone 1-(604)-232-4600, fax 1-604-232-4601 or by email: orders@signalchem.com
www.signalchem.com

FOR IN VITRO RESEARCH PURPOSES ONLY. NOT INTENDED FOR USE IN HUMAN OR ANIMALS.