

Anti-Methylated Lysine (Tri-ε-N-methyl), Biotin Conjugated

Catalog # L95-67BR

Lot # E372-7

Cited Applications

For WB, ELISA, IHC, IF

Ideal working dilutions for each application should be empirically determined by the investigator.

Specificity

Recognizes proteins with tri-methylation on lysine residues (N-epsilon).

Cross Reactivity

Pan-specific antibody. No cross-reactions detected with acetylated, mono-methylated and di-methylated proteins.

Host/Isotype/Clone#

Rabbit

Immunogen

Methylated lysine-KLH conjugates.

Conjugation

Acylation with NHS-biotin; the biotin : antibody molar ratio was 20:1.

Formulation

PBS, 50% glycerol, pH 7.

Stability

Store at 4°C (add 0.1% NaN₃) for several months, and at -20°C for longer periods. For optimal storage, aliquot antibody into smaller quantities after centrifugation and store at recommended temperature. For optimal performance, avoid repeated handling and multiple freeze/thaw cycles.

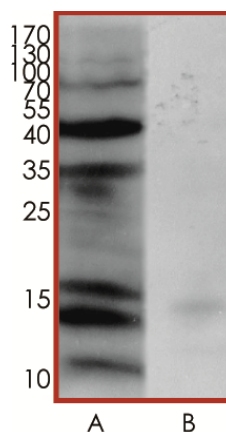
Scientific Background

Post-translational modification of proteins and peptides is a robust way to regulate function of existing proteins or peptides. Methylation on lysine residues is one example of post-translational modification and is performed by a variety of protein methyltransferases in the cell. C/EBPs are extensively modified by methylation of lysine side chains and this regulated methylation profoundly affects the activity of C/EBPs (1). The Methylated Lysine Antibody conjugated to biotin detects methylation on lysine residues in proteins and peptides.

References

- Leutz, R. et al: Crosstalk between phosphorylation and multi-site arginine/lysine methylation in C/EBPs. Transcr. 2011 Jan;2(1):3-8.

Sample Data



Representative western blot of the tri-methylated protein profile with Anti-Methylated Lysine (Tri-ε-N-methyl), Biotin conjugated (1:1000) using human melanoma (MMRU) cell lysate (A) and the MMRU lysate plus additional N-ε-tri-methyl lysine peptide inhibitor (50 ng/µl) (B).

Anti-Methylated Lysine (Tri-ε-N-methyl), Biotin Conjugated

Rabbit Polyclonal Antibody

Catalog Number

L95-67BR

Specific Lot Number

E372-7

Purification

By affinity chromatography on a tri-methyl lysine agarose column

Concentration

0.25 µg/µL

Stability

1yr at -20°C from date of shipment

Storage & Shipping

Store product at -20°C. For optimal storage, aliquot antibody into smaller quantities after centrifugation and store at recommended temperature. For optimal performance, avoid repeated handling and multiple freeze/thaw cycles. Product shipped on ice packs.

To place your order, please contact us by phone 1-(604)-232-4600, fax 1-604-232-4601 or by email: orders@signalchem.com
www.signalchem.com

FOR IN VITRO RESEARCH PURPOSES ONLY. NOT INTENDED FOR USE IN HUMAN OR ANIMALS.