

RYP Protein

Recombinant protein expressed in Sf9 cells

Catalog # R28-31G

Lot # F386-2

Product Description

Recombinant human RYP (255-end) was expressed by baculovirus in Sf9 insect cells using an N-terminal GST tag. The gene accession number is [NM_001005861](#).

Gene Aliases

D3S3195; JTK5; JTK5A; RYP

Formulation

Recombinant protein stored in 50mM Tris-HCl, pH 7.5, 50mM NaCl, 10mM glutathione, 0.1mM EDTA, 0.25mM DTT, 0.1mM PMSF, 25% glycerol.

Storage and Stability

Store product at -70°C. For optimal storage, aliquot target into smaller quantities after centrifugation and store at recommended temperature. For most favorable performance, avoid repeated handling and multiple freeze/thaw cycles.

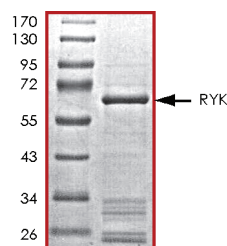
Scientific Background

RYP or receptor-like tyrosine kinase is an atypical member of the family of growth factor receptor protein tyrosine kinases. RYP differs from other receptor tyrosine kinases at a number of conserved residues in the activation and nucleotide binding domains (1). RYP has a leucine-rich extracellular domain with a WIF-type Wnt binding region, a single transmembrane domain, and an intracellular tyrosine kinase domain. RYP is involved in stimulating Wnt signaling pathways such as the regulation of axon path finding (2).

References

1. Katso, R. M. et.al: Functional analysis of H-Ryp, an atypical member of the receptor tyrosine kinase family. *Molec. Cell. Biol.* 19: 6427-6440, 1999.
2. Lu, W. et.al: Mammalian Ryp is a Wnt coreceptor required for stimulation of neurite outgrowth. *Cell* 119: 97-108, 2004.

Purity



The purity of RYP was determined to be **>90%** by densitometry. Approx. MW **66kDa**.

RYP Protein

Recombinant protein expressed in Sf9 cells

Catalog #	R28-31G
Lot #	F386-2
Purity	>90%
Concentration	0.2 µg/µl
Stability	1yr at -70°C from date of shipment
Storage & Shipping	Store product at -70°C. For optimal storage, aliquot target into smaller quantities after centrifugation and store at recommended temperature. For most favorable performance, avoid repeated handling and multiple freeze/thaw cycles. Product shipped on dry ice.