

## Beta-synuclein Protein

Full length recombinant protein expressed in E.coli cells

**Catalog # S22-30BH**

Lot # F747-3

### Product Description

Recombinant full length human Beta-synuclein was expressed in E. coli cells using an N-terminal His tag. The gene accession number is [NM\\_003085](#).

### Gene Aliases

SNCB

### Formulation

Recombinant protein stored in 50mM sodium phosphate, pH 7.0, 300mM NaCl, 150mM imidazole, 0.1mM PMSF, 0.25mM DTT, 25% glycerol.

### Storage and Stability

Store product at -70°C. For optimal storage, aliquot target into smaller quantities after centrifugation and store at recommended temperature. For most favorable performance, avoid repeated handling and multiple freeze/thaw cycles.

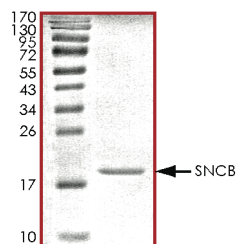
### Scientific Background

Beta-synuclein is a member of the synuclein family of proteins which are believed to be involved in the pathogenesis of neurodegenerative diseases. Beta-synuclein is highly homologous to alpha-synuclein which is abundantly expressed in the brain and putatively inhibits phospholipase D2 selectively. Beta-synuclein may play a role in neuronal plasticity, is abundant in neurofibrillary lesions of patients with Alzheimer disease. Beta-synuclein is shown to be highly expressed in the substantia nigra of the brain, a region of neuronal degeneration in patients with Parkinson disease but no direct relation to Parkinson disease has been established (1). An alteration in Beta-synuclein may impair its normal inhibitory action on the formation of toxic alpha-synuclein fibrils, thereby indirectly contributing to disease pathogenesis (2).

### References

1. Ohtake, H. et.al: Beta-synuclein gene alterations in dementia with Lewy bodies. *Neurology* 63: 805-811, 2004.
2. Lavedan, C. et.al: Absence of mutation in the beta- and gamma-synuclein genes in familial autosomal dominant Parkinson's disease. *DNA Res.* 5: 401-402, 1998.

### Purity



The purity of Beta-synuclein was determined to be **>95%** by densitometry. Approx. MW **19kDa**.

## Beta-synuclein Protein

Full length recombinant protein expressed in E. coli cells

Catalog Number	S22-30BH
Specific Lot Number	F747-3
Purity	>95%
Concentration	0.2µg/µl
Stability	1yr At -70°C from date of shipment
Storage & Shipping	Store product at -70°C. For optimal storage, aliquot target into smaller quantities after centrifugation and store at recommended temperature. For most favorable performance, avoid repeated handling and multiple freeze/thaw cycles. Product shipped on dry ice.

To place your order, please contact us by phone 1-(604)-232-4600, fax 1-604-232-4601 or by email: [orders@signalchem.com](mailto:orders@signalchem.com)  
[www.signalchem.com](http://www.signalchem.com)

**FOR IN VITRO RESEARCH PURPOSES ONLY. NOT INTENDED FOR USE IN HUMAN OR ANIMALS.**