

Recombinant Human MCP-3 (CCL7)

Recombinant human protein expressed in E. coli cells

Catalog # M823-40N

Lot # G3211-90

Product Description

Recombinant Human MCP-3 (CCL7) was expressed in E. coli cells. The protein accession number is [P80098](#)

Gene Aliases

MCP3, Monocyte chemoattractant protein 3, C-C motif chemokine 7, Small-inducible cytokine A7, NC28
Recombinant Human Monocyte Chemotactic Protein-3 (CCL7)

Endotoxin Level

<1.0 EU/µg of recombinant protein as determined by the LAL method.

Formulation

Lyophilized from a 0.2 µm filtered solution of PBS

Reconstitution Protocol

Reconstitute at 100 µg/mL in sterile PBS containing at least 0.1% human or bovine serum albumin

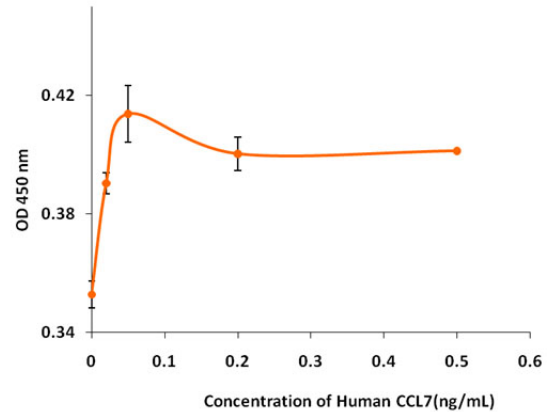
Storage and Stability

The lyophilized protein is stable for at least one year from date of receipt at -70°C. Upon reconstitution, this cytokine can be stored in working aliquots at 2° - 8°C for one month, or at -20°C for six months, with a carrier protein without detectable loss of activity. Avoid repeated freeze/thaw cycles.

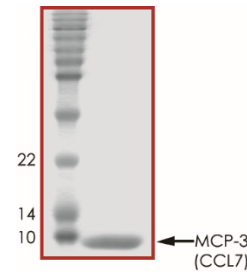
Scientific Background

Essentially a chemo-attractant, CCL7 signals through CCR receptors 1, 2 and 3. CCL7 can attract and activate monocytes, natural killer cells, T cells, and immature dendritic cells. CCL7 has also been shown to attract eosinophiles and induce histamine secretion from basophils.

Specific Activity



Purity



Recombinant Human MCP-3 (CCL7) resolved on a 17% SDS_PAGE gel under reducing conditions and stained with Coomassie Brilliant Blue G-250

Approx. MW **9.2 kDa**

Recombinant Human MCP-3 (CCL7)

Recombinant human protein expressed in E. coli cells

Catalog Number	M823-40N
Specific Lot Number	G3211-90
Purity	95%
Stability	6 mos. at -20°C from date of shipment
Storage & Shipping	The lyophilized protein is stable for at least one year from date of receipt at -70°C. Upon reconstitution, this cytokine can be stored in working aliquots at 2° - 8°C for one month, or at -20°C for six months, with a carrier protein without detectable loss of activity. Avoid repeated freeze/thaw cycles.

To place your order, please contact us by phone 1-(604)-232-4600, fax 1-604-232-4601 or by email: orders@signalchem.com
www.signalchem.com

FOR IN VITRO RESEARCH PURPOSES ONLY. NOT INTENDED FOR USE IN HUMAN OR ANIMALS.