

Recombinant Human SERPINF1

Recombinant human protein expressed in E. coli cells

Catalog # P843-40N

Lot # G3223-11

Product Description

Recombinant Human SERPINF1 was expressed in E. coli cells. The protein accession number is [P36955](#)

Gene Aliases

PEDF, SerpinF1, EPC-1, Cell proliferation-inducing gene 35 protein, PIG35, Recombinant Human Pigment Epithelium-Derived Factor (SERPINF1)

Endotoxin Level

<1.0 EU/µg of recombinant protein as determined by the LAL method.

Formulation

Recombinant PEDF was lyophilized from a 0.2 µm filtered 20 mM PB, 150 mM NaCl solution pH 7.5.

Reconstitution Protocol

A quick spin of the vial followed by reconstitution in distilled water to a concentration not less than 0.1 mg/mL. This solution can then be diluted into other buffers.

Storage and Stability

The lyophilized protein is stable for at least one year from date of receipt at -70°C. Upon reconstitution, this cytokine can be stored in working aliquots at 2° - 8°C for one month, or at -20°C for six months, with a carrier protein without detectable loss of activity. Avoid repeated freeze/thaw cycles.

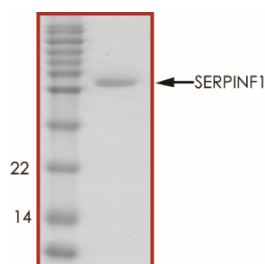
Scientific Background

Pigment epithelium-derived factor (PEDF), a 50-kDa secreted glycoprotein, is widely expressed throughout the human body, with expression decreasing during human hepatocellular carcinoma and breast cancer progression. PEDF binds to a cell membrane receptor to exhibit multifunctional activity in many cell types but its signaling mechanisms are largely unknown. PEDF exerts anti-angiogenic activity by arresting VEGF- or bFGF-mediated endothelial cell migration, inhibiting capillary morphogenesis, and inducing endothelial cell apoptosis. In human dermal microvascular cells, PEDF induces FasL expression and subsequently activation of caspase 8, which initiates the downstream apoptotic cascade. In human umbilical vein endothelial cells (HUVECs), its induction of apoptosis was shown to depend on p38 MAPK activity and to involve activation of caspases 8 and 9.

Specific Activity

The ED(50) was not determined.

Purity



Recombinant Human SERPINF1 resolved on a 15% SDS-PAGE gel under reducing conditions and stained with Coomassie Brilliant Blue G-250

Approx. MW **45.0 kDa**

Recombinant Human SERPINF1

Recombinant human protein expressed in E. coli cells

Catalog Number	P843-40N
Specific Lot Number	G3223-11
Purity	95%
Stability	6 mos. at -20°C from date of shipment
Storage & Shipping	The lyophilized protein is stable for at least one year from date of receipt at -70°C. Upon reconstitution, this cytokine can be stored in working aliquots at 2° - 8°C for one month, or at -20°C for six months, with a carrier protein without detectable loss of activity. Avoid repeated freeze/thaw cycles.

To place your order, please contact us by phone 1-(604)-232-4600, fax 1-604-232-4601 or by email: orders@signalchem.com
www.signalchem.com

FOR IN VITRO RESEARCH PURPOSES ONLY. NOT INTENDED FOR USE IN HUMAN OR ANIMALS.