

Anti-AKT (pan)

Rabbit Polyclonal Antibody

Catalog # A16-63R

Lot # H245-4

Cited Applications

- Western blot (1:1000)

Ideal working dilutions for each application should be empirically determined by the investigator.

Specificity

Recognizes the AKT1, AKT2, and AKT3 protein

Cross Reactivity

- Western blot AKT1, AKT2, and AKT3 from human and mouse cells

AKT1, AKT2, and AKT3 from other species may also be detectable

Host

Rabbit

Immunogen

Synthetic peptide corresponding to amino acids 471-475 of human AKT

Formulation

PBS pH 7.4, 0.02% sodium azide, 50% glycerol

Stability

Store at 4°C (add 0.1% NaN₃) for several months, and at -20°C for longer periods. For optimal storage, aliquot antibody into smaller quantities after centrifugation and store at recommended temperature. For optimal performance, avoid repeated handling and multiple freeze/thaw cycles.

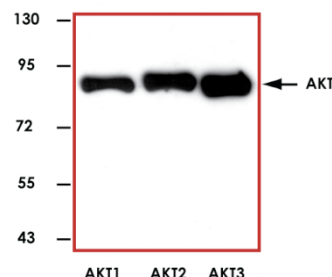
Scientific Background

Akt, also referred to as PKB or Rac, plays a critical role in controlling survival and apoptosis. This protein kinase is activated by insulin and various growth and survival factors to function in a wortmannin-sensitive pathway involving PI3 kinase. Akt is activated by phospholipid binding and activation loop phosphorylation at Thr308 by PDK1 and by phosphorylation within the carboxy terminus at Ser473 (1).

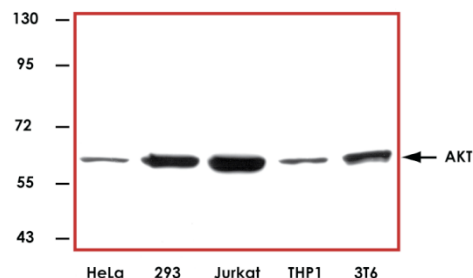
References

1. Anderson, KE. et al: Translocation of PDK-1 to the plasma membrane is important in allowing PDK-1 to activate protein kinase B. *Curr Biol.* 1998 Jun 4;8(12): 684-91.

Sample Data



Representative western blot with Anti-AKT (pan) (1:1000) using 20 ng of human recombinant AKT1, AKT2, and AKT3.



Representative western blot with Anti-AKT (pan) (1:1000) using 30 µg of HeLa, HEK-293T, Jurkat, THP1, and 3T6 cell lysate.

Anti-AKT (pan)

Rabbit Polyclonal Antibody

Catalog Number

A16-63R

Specific Lot Number

H245-4

Purification

Affinity chromatography

Concentration

1.0 µg/µL

Stability

1yr At -20°C from date of shipment

Storage & Shipping

Store product at -20°C. For optimal storage, aliquot antibody into smaller quantities after centrifugation and store at recommended temperature. For optimal performance, avoid repeated handling and multiple freeze/thaw cycles. Product shipped on ice packs.

To place your order, please contact us by phone 1-(604)-232-4600, fax 1-604-232-4601 or by email: orders@signalchem.com
www.signalchem.com

FOR IN VITRO RESEARCH PURPOSES ONLY. NOT INTENDED FOR USE IN HUMAN OR ANIMALS.