

Anti-PKCθ

Rabbit Polyclonal Antibody

Catalog # P74-63R

Lot # H270-4

Cited Applications

- Western blot (1:1000)

Ideal working dilutions for each application should be empirically determined by the investigator.

Specificity

Recognizes the PKCθ protein

Cross Reactivity

- Western blot human PKCθ

PKCδ/θ from other species may also be detectable

Host

Rabbit

Immunogen

Synthetic peptide corresponding to amino acids 674-678 of human PKCθ

Formulation

PBS pH 7.4, 0.02% sodium azide, 50% glycerol

Stability

Store at 4°C (add 0.1% NaN₃) for several months, and at -20°C for longer periods. For optimal storage, aliquot antibody into smaller quantities after centrifugation and store at recommended temperature. For optimal performance, avoid repeated handling and multiple freeze/thaw cycles.

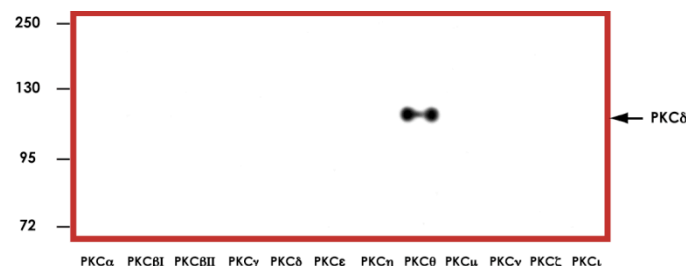
Scientific Background

Protein kinase C theta (PKCθ) is important component in the intracellular signaling cascade (1). Recent studies have suggested that local accumulation of fat metabolites inside skeletal muscle may activate a serine kinase cascade involving PKC-theta leading to defects in insulin signaling and glucose transport in skeletal muscle (2). Insulin resistance plays a primary role in the development of type 2 diabetes and may be related to alterations in fat metabolism. PKC-theta is a crucial component mediating fat-induced insulin resistance in skeletal muscle and is a potential therapeutic target for the treatment of type 2 diabetes (2).

References

1. Manicassamy, S. and Sun, Z. The critical role of protein kinase C-theta in Fas/Fas ligand-mediated apoptosis. J. Immunol. 2007;178(1):312-9.
2. Kim, J K. et al: PKC-theta knockout mice are protected from fat-induced insulin resistance. J. Clin. Invest. 2004;114(6):823-7.

Sample Data



Representative western blot with Anti- PKCθ (1:1000) using 20ng of GST –tagged human recombinant PKCα, PKCβI, PKCβII, PKCγ, PKCδ, PKCε, PKCη, PKCθ, PKCμ, PKCν, PKCζ, and PKCι.

Anti-PKCθ

Rabbit Polyclonal Antibody

Catalog Number

P74-63R

Specific Lot Number

H270-4

Purification

Affinity chromatography

Concentration

1.0 µg/µL

Stability

1yr At -20°C from date of shipment

Storage & Shipping

Store product at -20°C. For optimal storage, aliquot antibody into smaller quantities after centrifugation and store at recommended temperature. For optimal performance, avoid repeated handling and multiple freeze/thaw cycles. Product shipped on ice packs.

To place your order, please contact us by phone 1-(604)-232-4600, fax 1-604-232-4601 or by email: orders@signalchem.com

www.signalchem.com

FOR IN VITRO RESEARCH PURPOSES ONLY. NOT INTENDED FOR USE IN HUMAN OR ANIMALS.