



SignalChem
Specialists in **Signaling Proteins**
1-866-9 KINASE (54-6273)

Catalogue #

Aliquot Size

S75-63R-100

100 µg

Anti-PKCζ

Rabbit Polyclonal Antibody

Catalog # P75-63R

Lot # H283-6

Cited Applications

- Western blot (1:1000)

Ideal working dilutions for each application should be empirically determined by the investigator.

Specificity

Recognizes the PKCζ protein

Cross Reactivity

- Western blot of human PKCζ

PKCζ from other species may also be detectable

Host

Rabbit

Immunogen

Synthetic peptide corresponding to amino acids 408-412 (TSTFC) of human PKCζ

Formulation

PBS pH 7.4, 0.02% sodium azide, 50% glycerol

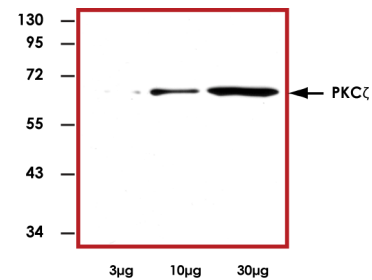
Stability

Store at 4°C (add 0.1% NaN₃) for several months, and at -20°C for longer periods. For optimal storage, aliquot antibody into smaller quantities after centrifugation and store at recommended temperature. For optimal performance, avoid repeated handling and multiple freeze/thaw cycles.

Scientific Background

PKCζ is an atypical isoform of the PKC family. PKCζ is found in both particulate and soluble fractions and cannot be activated by phorbol ester. Overexpression of PKCζ and subsequent phorbol ester treatment abolished phorbol ester-induced reduction in cell proliferation (1). Overexpression of PKCζ also potentiates phorbol ester-induced mitogen-activated protein (MAP) kinase activation in a PKC-dependent manner. PKCζ is an upstream modulator of p70S6K, an important regulator of cell proliferation (2).

Sample Data



Representative western blot with Anti-PKCζ (1:1000) using 3 µg, 10 µg, and 30 µg of 3T6 cell lysate.

References

1. Kim, S.J. Et al: Phorbol ester effects in atypical protein kinase C zeta overexpressing NIH3T3 cells: possible evidence for crosstalk between protein kinase C isoforms. *Biochem Biophys Res Commun.* 1997 Aug 18;237(2):336-9.
2. Romanelli, A. et al: p70 S6 kinase is regulated by protein kinase Czeta and participates in a phosphoinositide 3-kinase-regulated signalling complex. *Mol Cell Biol.* 1999 Apr;19(4):2921-8.

Anti-PKCζ

Rabbit Polyclonal Antibody

Catalog Number

P75-63R

Specific Lot Number

H283-6

Purification

Affinity chromatography

Concentration

1.0 µg/µL

Stability

1yr At -20°C from date of shipment

Storage & Shipping

Store product at -20°C. For optimal storage, aliquot antibody into smaller quantities after centrifugation and store at recommended temperature. For optimal performance, avoid repeated handling and multiple freeze/thaw cycles. Product shipped on ice packs.

To place your order, please contact us by phone 1-(604)-232-4600, fax 1-604-232-4601 or by email: orders@signalchem.com
www.signalchem.com

FOR IN VITRO RESEARCH PURPOSES ONLY. NOT INTENDED FOR USE IN HUMAN OR ANIMALS.