

BAD Protein

Full-length recombinant protein expressed in Sf9 cells

Catalog # B03-30G

Lot # H320-1

Product Description

Recombinant full-length human BAD was expressed by baculovirus in Sf9 insect cells using an N-terminal GST tag. The gene accession number is [NM_032989](#).

Gene Aliases

BBC2, BCL2L8

Formulation

Recombinant protein stored in 50mM Tris-HCl, pH 7.5, 150mM NaCl, 10mM glutathione, 0.1mM EDTA, 0.25mM DTT, 0.1mM PMSF, 25% glycerol.

Storage and Stability

Store product at -70°C. For optimal storage, aliquot target into smaller quantities after centrifugation and store at recommended temperature. For most favorable performance, avoid repeated handling and multiple freeze/thaw cycles.

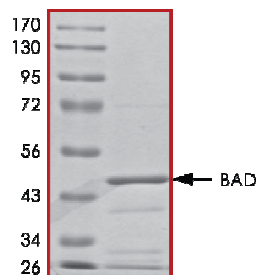
Scientific Background

BAD is a member of the BCL-2 family of proteins that are known to be regulators of programmed cell death. BAD is a pro-apoptotic protein that forms a heterodimer complex with BCL-xL and BCL-2 which reverses the prosurvival activity of these proteins (1). The proapoptotic activity of BAD is regulated through its phosphorylation and this inhibits the pro-apoptosis function of BAD. Protein kinases such as AKT, RAF and RSK1 can phosphorylate BAD and RSK1-induced phosphorylation of BAD at ser112 suppresses BAD-mediated apoptosis in neurons. BAD inhibits G(1) to S phase transition in MCF7 breast cancer cells and overexpression of BAD inhibits cell growth as well as cyclin D1 expression (2).

References

1. Yang E, et al: Bad, a heterodimeric partner for Bcl-X(L) and Bcl-2, displaces Bax and promotes cell death. *Cell* 80: 285-291, 1995.
2. Fernando R, et al: Breast cancer cell proliferation is inhibited by BAD: regulation of cyclin D1. *J Biol Chem.* 2007 Sep 28;282(39):28864-73.

Purity



The purity of BAD was determined to be **>85%** by densitometry. Approx. MW **47kDa**.

BAD Protein

Full-length recombinant protein expressed in Sf9 cells

Catalog Number	B03-30G
Specific Lot Number	H320-1
Purity	>85%
Concentration	0.2 µg/µl
Stability	1yr at -70°C from date of shipment
Storage & Shipping	Store product at -70°C. For optimal storage, aliquot target into smaller quantities after centrifugation and store at recommended temperature. For most favorable performance, avoid repeated handling and multiple freeze/thaw cycles. Product shipped on dry ice.

To place your order, please contact us by phone 1-(604)-232-4600, fax 1-604-232-4601 or by email: orders@signalchem.com
www.signalchem.com

FOR IN VITRO RESEARCH PURPOSES ONLY. NOT INTENDED FOR USE IN HUMAN OR ANIMALS.