

NUAK1, Active

Recombinant full-length human protein expressed in Sf9 cells

Catalog # N19-10G

Lot # 1291-3

Product Description

Recombinant full-length human NUAK1 (ARK5) was expressed by baculovirus in Sf9 insect cells using an N-terminal GST tag. The gene accession number is [NM_014840](#).

Gene Aliases

ARK5; KIAA0537

Formulation

Recombinant protein stored in 50mM Tris-HCl, pH 7.5, 150mM NaCl, 10mM glutathione, 0.1mM EDTA, 0.25mM DTT, 0.1mM PMSF, 25% glycerol.

Storage and Stability

Store product at -70°C . For optimal storage, aliquot target into smaller quantities after centrifugation and store at recommended temperature. For most favorable performance, avoid repeated handling and multiple freeze/thaw cycles.

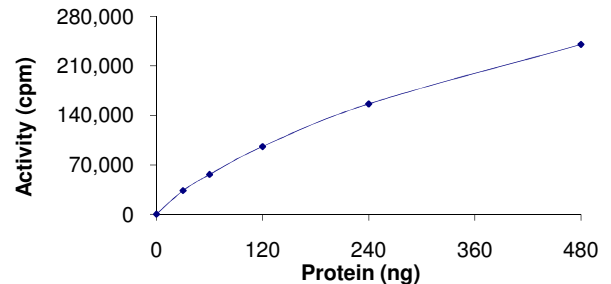
Scientific Background

NUAK1 or SNF1/AMP kinase-related kinase (SNARK) is a member of the NUAK family of SNF1-like kinase 1 that is also known as AMPK-related protein kinase 5 (ARK5). ARK5 is a tumor cell survival factor that is activated by AKT and acts as an ATM kinase under conditions of nutrient starvation (1). NUAK1 is highly expressed in heart and brain, and at lower levels in skeletal muscle, kidney, ovary, placenta, lung, and liver. NUAK1 is involved in tolerance to glucose starvation and suppresses Fas-induced apoptosis by phosphorylation of CASP6, thus suppressing the activation of the caspase and the subsequent cleavage of CFLAR (2).

References

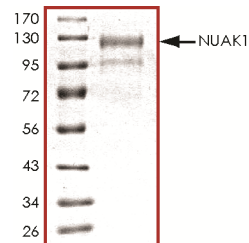
1. Suzuki, A. et.al: Identification of a novel protein kinase mediating Akt survival signaling to the ATM protein. *J. Biol. Chem.* 278: 48-53, 2003.
2. Lizcano J.M. et.al: LKB1 is a master kinase that activates 13 kinases of the AMPK subfamily, including MARK/PAR-1. *EMBO J.* 23:833-843, 2004.

Specific Activity



The specific activity of NUAK1 was determined to be **50 nmol/min/mg** as per activity assay protocol.

Purity



The purity of NUAK1 was determined to be **>80%** by densitometry, approx. MW **122 kDa**.

NUAK1, Active

Recombinant full-length human protein expressed in Sf9 cells

Catalog Number	N19-10G
Specific Activity	50 nmol/min/mg
Specific Lot Number	1291-3
Purity	>80%
Concentration	0.1 µg/µl
Stability	1yr At -70°C from date of shipment
Storage & Shipping	Store product at -70°C . For optimal storage, aliquot target into smaller quantities after centrifugation and store at recommended temperature. For most favorable performance, avoid repeated handling and multiple freeze/thaw cycles. Product shipped on dry ice.

To place your order, please contact us by phone 1-(604)-232-4600, fax 1-604-232-4601 or by email: orders@signalchem.com
www.signalchem.com

FOR IN VITRO RESEARCH PURPOSES ONLY. NOT INTENDED FOR USE IN HUMAN OR ANIMALS.

Activity Assay Protocol

Reaction Components

Active Kinase (Catalog #: N19-10G)

Active NUA1 (0.1 µg/µl) diluted with Kinase Dilution Buffer III (Catalog #: K23-09) and assayed as outlined in sample activity plot. (Note: these are suggested working dilutions and it is recommended that the researcher perform a serial dilution of Active NUA1 for optimal results).

Kinase Dilution Buffer III (Catalog #: K23-09)

Kinase Assay Buffer I (Catalog #: K01-09) diluted at a 1:4 ratio (5X dilution) with 50ng/µl BSA solution.

Kinase Assay Buffer I (Catalog #: K01-09)

Buffer components: 25mM MOPS, pH 7. 2, 12.5mM β-glycerol-phosphate, 25mM MgCl₂, 5mM EGTA, 2mM EDTA. Add 0.25mM DTT to Kinase Assay Buffer prior to use.

[³³P]-ATP Assay Cocktail

Prepare 250µM [³³P]-ATP Assay Cocktail in a designated radioactive working area by adding the following components: 150µl of 10mM ATP Stock Solution (Catalog #: A50-09), 100µl [³³P]-ATP (1mCi/100µl), 5.75ml of Kinase Assay Buffer I (Catalog #: K01-09). Store 1ml aliquots at -20°C.

10mM ATP Stock Solution (Catalog #: A50-09)

Prepare ATP stock solution by dissolving 55mg of ATP in 10ml of Kinase Assay Buffer I (Catalog #: K01-09). Store 200µl aliquots at -20°C.

Substrate (Catalog #: C10-58)

CHKtide peptide substrate (KKKVSRSGLYRSPMPENLNRPR) diluted in distilled H₂O to a final concentration of 1 mg/ml.

Assay Protocol

- Step 1.** Thaw [³³P]-ATP Assay Cocktail in shielded container in a designated radioactive working area.
- Step 2.** Thaw the Active NUA1, Kinase Assay Buffer, Substrate and Kinase Dilution Buffer on ice.
- Step 3.** In a pre-cooled microfuge tube, add the following reaction components bringing the initial reaction volume up to 20µl:
 - Component 1.** 10µl of diluted Active NUA1 (Catalog #N19-10G)
 - Component 2.** 5µl of 1mg/ml stock solution of substrate (Catalog #C10-58)
 - Component 3.** 5µl distilled H₂O (4°C)
- Step 4.** Set up the blank control as outlined in step 3, excluding the addition of the substrate. Replace the substrate with an equal volume of distilled H₂O.
- Step 5.** Initiate the reaction by the addition of 5 µl [³³P]-ATP Assay Cocktail bringing the final volume up to 25µl and incubate the mixture in a water bath at 30°C for 15 minutes.
- Step 6.** After the 15 minute incubation period, terminate the reaction by spotting 20 µl of the reaction mixture onto individual pre-cut strips of phosphocellulose P81 paper.
- Step 7.** Air dry the pre-cut P81 strip and sequentially wash in a 1% phosphoric acid solution (dilute 10ml of phosphoric acid and make a 1L solution with distilled H₂O) with constant gentle stirring. It is recommended that the strips be washed a total of 3 intervals for approximately 10 minutes each.
- Step 8.** Count the radioactivity on the P81 paper in the presence of scintillation fluid in a scintillation counter.
- Step 9.** Determine the corrected cpm by removing the blank control value (see Step 4) for each sample and calculate the kinase specific activity as outlined below.

Calculation of [³³P]-ATP Specific Activity (SA) (cpm/pmol)

Specific activity (SA) = cpm for 5 µl [³³P]-ATP / pmoles of ATP (in 5 µl of a 250 µM ATP stock solution, i.e., 1250 pmoles)

Kinase Specific Activity (SA) (pmol/min/µg or nmol/min/mg)

Corrected cpm from reaction / [(SA of ³³P-ATP in cpm/pmol)*(Reaction time in min)*(Enzyme amount in µg or mg)]*[(Reaction Volume) / (Spot Volume)]

To place your order, please contact us by phone 1-(604)-232-4600, fax 1-604-232-4601 or by email: orders@signalchem.com
www.signalchem.com

FOR IN VITRO RESEARCH PURPOSES ONLY. NOT INTENDED FOR USE IN HUMAN OR ANIMALS.