

Anti-MBP

Chicken Polyclonal Antibody

Catalog # M42-563C

Lot # J1274-24

Cited Applications

WB, IF

Suggested Dilutions:

WB 1:5,000, IF 1:500

Ideal working dilutions for each application should be empirically determined by the investigator.

Specificity

Recognizes the MBP protein

Cross Reactivity

Human, Mouse, Rat and Bovine

Host/Isotype/Clone#

Chicken, IgY

Immunogen

Three peptide sequences conserved in higher vertebrate MBP proteins

Formulation

Total IgY fraction in PBS + 10 mM NaN₃.

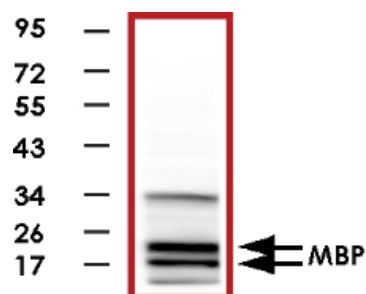
Scientific Background

Myelin Basic Protein (MBP) is a major protein of the myelin sheath. The region of the protein that is required for folding, polymerization and substrate specificities is conserved among various species. This conserved region may also have a specialized role in protein-lipid interactions in the myelin membrane (1). MBP is expressed in oligodendrocytes, thus antibodies to MBP are useful tools for identifying this cell type. In the central nervous system there are different forms of the protein made by alternate transcription from a single gene. These isoforms have molecular weights of 21.5, 18.5, and 17.2 kDa. Because the two smaller isoforms have similar molecular weights, Western blots using MBP antibodies typically result in two bands.

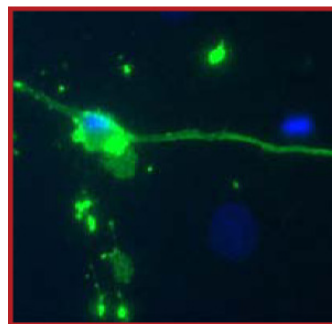
References

1. Chapman, et al: Conformation of myelin basic protein and its role in myelin formation. AdvExp Med Biol 1978;100:207-20.

Sample Data



Western blot of rat cortex homogenate showing specific immunolabeling of the ~ 18 & 22kDa MBP protein.



Rat mixed neuron/glia cultures stained with chicken anti-Myelin Basic Protein (green). Blue is a DNA stain. Note that the Myelin Basic Protein antibody stains an oligodendrocyte and some membrane shed from this cell. Other cells in the field include neurons, astrocytes, microglia and fibroblasts, all of which are completely negative.

Anti-MBP

Chicken Polyclonal Antibody

Catalog Number

M42-563C

Specific Lot Number

J1274-24

Purification

Total IgY fraction

Stability

1yr at -20°C from date of shipment

Storage & Shipping

Store product at -20°C. For optimal storage, aliquot antibody into smaller quantities after centrifugation and store at recommended temperature. For optimal performance, avoid repeated handling and multiple freeze/thaw cycles. Product shipped on ice packs.

To place your order, please contact us by phone 1-(604)-232-4600, fax 1-604-232-4601 or by email: orders@signalchem.com
www.signalchem.com

FOR IN VITRO RESEARCH PURPOSES ONLY. NOT INTENDED FOR USE IN HUMAN OR ANIMALS.