

Anti-phospho-SNCA (Ser129)

Rabbit Polyclonal Antibody

Catalog # S22-365R

Lot # J1274-4

Cited Applications

WB

Suggested Dilutions:

WB 1:1,000

Ideal working dilutions for each application should be empirically determined by the investigator.

Specificity

Recognizes the SNCA protein phosphorylated at serine 129

Cross Reactivity

Human, Mouse, Bovine, Canine and non-Human Primate

Host/Isotype/Clone#

Rabbit, IgG

Immunogen

Synthetic phospho-peptide corresponding to amino acid residues surrounding Ser129 of Rat SNCA conjugated to KLH

Formulation

100 µl in 10 mM HEPES (pH 7.5), 150 mM NaCl, 100 µg per ml BSA and 50% glycerol.

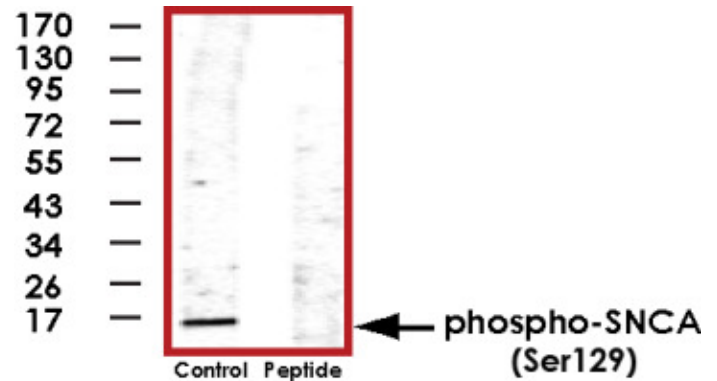
Scientific Background

Alpha-synuclein is expressed in the presynaptic terminal of the neuron where it is implicated in the formation of SNARE complexes. Aggregated alpha-synuclein is one of the major components found in the Lewy bodies, which are found in the brains of patients with Parkinson's disease (PD) and other neurodegenerative disorders (1). In fact, there is evidence to suggest that early onset Parkinson's disease may be caused by a duplication or triplication of one of the alpha synuclein genes (2). Alpha-synuclein is also found in the brains of patients with multiple system atrophy (MSA) and amyotrophic lateral sclerosis (ALS). Recent evidence suggests that phosphorylation of alpha-synuclein at Ser129 plays a role in the formation of inclusions in PD (3,4).

References

- Okochi, M. et al: Constitutive phosphorylation of the Parkinson's disease associated alpha-synuclein. J Biol Chem 2000 Jan 7;275(1): 390-7.
- Chartier-Harlin, M. C. et al: Alpha-synuclein locus duplication as a cause of familial Parkinson's disease. Lancet 2004 364: 1167-1169.
- Smith, W. W. et al: Alpha-synuclein phosphorylation enhances eosinophilic cytoplasmic inclusion formation in SH-SY5Y Cells. J Neurosci 2005 June 8; 25(23):5544-5552.
- Masliyah, E. et al: Effects of alpha-synuclein immunization in a mouse model of Parkinson's disease. Neuron 2005 Jun 16;46(6):857-868.

Sample Data



Western blot of rat cortex lysate showing specific labeling of the ~15kDa alpha synuclein protein phosphorylated at Ser129. Immunolabeling is blocked by the phosphopeptide (peptide) used as antigen but not by the corresponding dephosphopeptide (not shown).

Anti-phospho-SNCA (Ser129)

Rabbit Polyclonal Antibody

Catalog Number

S22-365R

Specific Lot Number

J1274-4

Purification

Affinity chromatography

Stability

1yr at -20°C from date of shipment

Storage & Shipping

Store product at -20°C. For optimal storage, aliquot antibody into smaller quantities after centrifugation and store at recommended temperature. For optimal performance, avoid repeated handling and multiple freeze/thaw cycles. Product shipped on ice packs.

To place your order, please contact us by phone 1-(604)-232-4600, fax 1-604-232-4601 or by email: orders@signalchem.com
www.signalchem.com

FOR IN VITRO RESEARCH PURPOSES ONLY. NOT INTENDED FOR USE IN HUMAN OR ANIMALS.