

## p38δ, Unactive

Full-length recombinant protein expressed in Sf9 cells

**Catalog # M38-14G**

Lot # K221-1

### Product Description

Recombinant full-length human p38δ was expressed by baculovirus in Sf9 insect cells using an N-terminal GST tag. The gene accession number is [NM\\_002754](#).

### Gene Aliases

SAPK4; PRKM13; MAPK13

### Formulation

Recombinant protein stored in 50mM Tris-HCl, pH 7.5, 150mM NaCl, 0.25mM DTT, 0.1mM EGTA, 0.1mM EDTA, 0.1mM PMSF, 25% glycerol.

### Storage and Stability

Store product at -70°C. For optimal storage, aliquot target into smaller quantities after centrifugation and store at recommended temperature. For most favorable performance, avoid repeated handling and multiple freeze/thaw cycles.

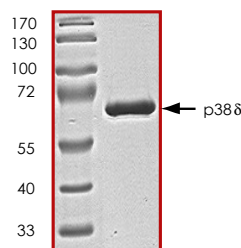
### Scientific Background

p38δ (SAPK4) is a member of the p38 MAPK family and is activated by chemical and environmental stresses as well as by proinflammatory cytokines. P38δ has a TGY dual phosphorylation motif and is activated in response to cellular stresses and proinflammatory cytokines (1). MAP kinase kinases 3, and 6 can phosphorylate and activate this kinase. Transcription factor ATF2, and microtubule dynamics regulator stathmin have been shown to be the substrates of this kinase (2).

### References

- Goedert, M. et al: Activation of the novel stress-activated protein kinase SAPK4 by cytokines and cellular stresses is mediated by SKK3 (MKK6); comparison of its substrate specificity with that of other SAP kinases. EMBO J. 16: 3563-3571, 1997.
- Kumar, S. et al: Novel homologues of CSBP/p38 MAP kinase: activation, substrate specificity and sensitivity to inhibition by pyridinyl imidazoles. Biochem Biophys Res Commun. 1997 Jun 27;235(3):533-8.

### Purity



The purity was determined to be **>80%** by densitometry. Approx. MW **65kDa**.

## p38δ, Unactive

Full-length recombinant protein expressed in Sf9 cells

Catalog Number **M38-14G**

Specific Lot Number **K221-1**

Purity	>80%
Concentration	0.2µg/µl
Stability	1yr At -70°C from date of shipment
Storage & Shipping	Store product at -70°C. For optimal storage, aliquot target into smaller quantities after centrifugation and store at recommended temperature. For most favorable performance, avoid repeated handling and multiple freeze/thaw cycles. Product shipped on dry ice.

To place your order, please contact us by phone 1-(604)-232-4600, fax 1-604-232-4601 or by email: [orders@signalchem.com](mailto:orders@signalchem.com)  
[www.signalchem.com](http://www.signalchem.com)

**FOR IN VITRO RESEARCH PURPOSES ONLY. NOT INTENDED FOR USE IN HUMAN OR ANIMALS.**