

MEP50 (WDR77) Protein

Full-length recombinant human protein expressed in Sf9 cells

Catalog # W329-30G

Lot # L2110-10

Product Description

Full-length recombinant human MEP50 (WDR77) protein was expressed by baculovirus in Sf9 insect cells using an N-terminal GST tag. The MEP50 gene accession number is [BC001679](#).

Gene Aliases

WDR77, HKMT1069, MGC2722, Nbla10071, RP11-552M11.3

Formulation

Recombinant protein stored in 50mM Tris-HCl, pH 7.5, 150mM NaCl, 10mM glutathione, 0.1mM EDTA, 0.25mM DTT, 0.1mM PMSF, 25% glycerol.

Storage and Stability

Store product at -70°C. For optimal storage, aliquot target into smaller quantities after centrifugation and store at recommended temperature. For most favorable performance, avoid repeated handling and multiple freeze/thaw cycles.

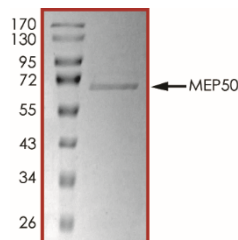
Scientific Background

Methylosome protein 50 (MEP50) is a component of methylosome that contains the methyltransferase JBP1 (PRMT5) and the pICln protein. The methylosome functions to modify specific arginines to dimethylarginines in the arginine- and glycine-rich domains of several spliceosomal Sm proteins. Within the methylosome, MEP50 binds protein substrates and activates the oncogenic protein arginine methyl transferase 5 (PRMT5).

References

1. Wei TY, et al: Methylosome protein 50 promotes androgen- and estrogen-independent tumorigenesis. Cell Signal. 2014 Dec;26(12):2940-50.
2. Friesen WJ, et al: A novel WD repeat protein component of the methylosome binds Sm proteins. J Biol Chem. 2002 Mar 8;277(10):8243-7.

Purity



The purity of MEP50 (WDR77) was determined to be **>90%** by densitometry, approx. MW **68 kDa**.

MEP50 (WDR77) Protein

Full-length recombinant human protein expressed in Sf9 cells

Catalog #	W329-30G
Lot #	L2110-10
Purity	>90%
Concentration	0.1 µg/µl
Stability	1yr at -70°C from date of shipment
Storage & Shipping	Store product at -70°C. For optimal storage, aliquot target into smaller quantities after centrifugation and store at recommended temperature. For most favorable performance, avoid repeated handling and multiple freeze/thaw cycles. Product shipped on dry ice.

To place your order, please contact us by phone 1-(604)-232-4600, fax 1-604-232-4601 or by email: orders@signalchem.com
www.signalchem.com

FOR IN VITRO RESEARCH PURPOSES ONLY. NOT INTENDED FOR USE IN HUMAN OR ANIMALS.