

Anti-SHP2

Rabbit Polyclonal Antibody

Catalog # P38-63R

Lot # M168-1

Cited Applications

- Western blot (1:1000)

Ideal working dilutions for each application should be empirically determined by the investigator.

Specificity

Recognizes the SHP2 (PTPN11) protein

Cross Reactivity

- Western blot human and mouse SHP2

SHP2 from other species may also be detectable

Host

Rabbit

Immunogen

Synthetic peptide corresponding to amino acids 578-582 of human SHP2

Formulation

PBS, pH7.4, 0.02%NaN₃, 50% glycerol

Stability

Store at 4°C (add 0.1% NaN₃) for several months, and at -20°C for longer periods. For optimal storage, aliquot antibody into smaller quantities after centrifugation and store at recommended temperature. For optimal performance, avoid repeated handling and multiple freeze/thaw cycles.

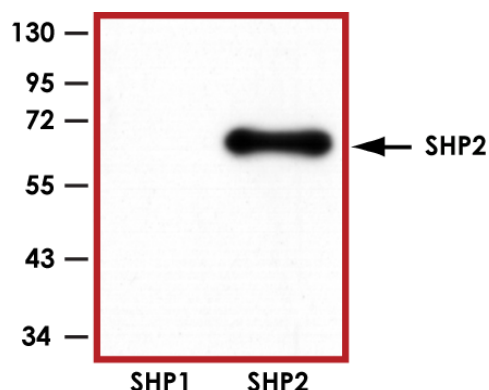
Scientific Background

PTPN11 (SHP2) is one of the 2 closely related mammalian intracellular PTPases whose sequences encode 2 tandem SRC homology 2 (SH2) domains that are located at the amino-terminal side of a single PTPase catalytic domain (1). This PTP is widely expressed in most tissues and plays a regulatory role in various cell signaling events that are important for a diversity of cell functions, such as mitogenic activation, metabolic control, transcription regulation, and cell migration (2). Mutations in this gene are a cause of Noonan syndrome, Cardiofacio-cutaneous Syndrome as well as acute myeloid leukemia.

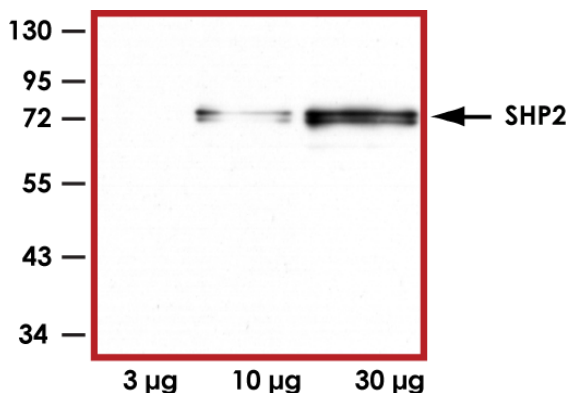
References

1. Dechert, U. et al: Protein-tyrosine phosphatase SH-PTP2 (PTPN11) is localized to 12q24.1-24.3. *Hum. Genet.* 96: 609-615, 1995.
2. Ahmad, S. et al: A widely expressed human protein-tyrosine phosphatase containing src homology 2 domains. *Proc. Nat. Acad. Sci.* 90: 2197-2201, 1993.

Sample Data



Representative Western blot with Anti-SHP2 (1:1000) using 20 ng of GST-tagged human recombinant SHP1 and SHP2.



Representative Western blot with Anti-SHP2 (1:1000) using 3 µg, 10 µg and 30 µg of Jurkat cell lysate.

Anti-SHP2

Rabbit Polyclonal Antibody

Catalog Number

P38-63R

Specific Lot Number

M168-1

Purification
Concentration

Affinity chromatography
1.0 µg/µL

Stability
Storage & Shipping

1yr at -20°C from date of shipment
Store product at -20°C. For optimal storage, aliquot antibody into smaller quantities after centrifugation and store at recommended temperature. For optimal performance, avoid repeated handling and multiple freeze/thaw cycles. Product shipped on ice packs.

To place your order, please contact us by phone 1-(604)-232-4600, fax 1-604-232-4601 or by email: orders@signalchem.com

www.signalchem.com

FOR IN VITRO RESEARCH PURPOSES ONLY. NOT INTENDED FOR USE IN HUMAN OR ANIMALS.