

Catalogue #	Aliquot Size
P91-11H-05	5 µg
P91-11H-10	10 µg
P91-11H-20	20 µg

## FAK, Active

Recombinant protein expressed in Sf9 cells

**Catalog # P91-11H**

Lot # M180-2

### Product Description

Recombinant human FAK (393-698) was expressed by baculovirus in Sf9 insect cells using an N-terminal His tag. The gene accession number is [NM\\_153831](#).

### Gene Aliases

PTK2, FADK, FAK1, pp125FAK

### Formulation

Recombinant protein stored in 50mM sodium phosphate, pH 7.0, 300mM NaCl, 150mM imidazole, 0.1mM PMSF, 0.2mM DTT, 25% glycerol.

### Storage and Stability

Store product at -70°C. For optimal storage, aliquot target into smaller quantities after centrifugation and store at recommended temperature. For most favorable performance, avoid repeated handling and multiple freeze/thaw cycles.

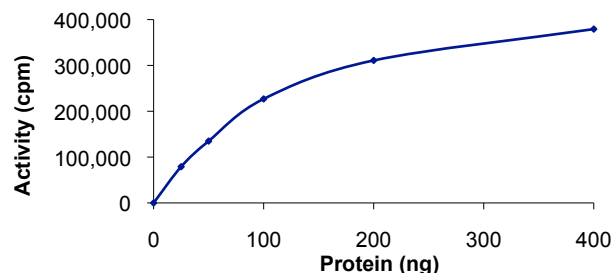
### Scientific Background

FAK (Focal Adhesion Kinase) is a non-receptor protein tyrosine kinase involved in signal transduction from integrin-enriched focal adhesion sites that mediate cell contact with the extracellular matrix. FAK-enhanced signals have been shown to mediate the survival of anchorage-dependent cells and are critical for efficient cell migration in response to growth factor receptor and integrin stimulation (1). Elevated expression of FAK in human tumors has been correlated with increased malignancy and invasiveness (2). Elevated FAK expression in anaplastic astrocytoma and glioblastoma tumor biopsy samples has been demonstrated.

### References

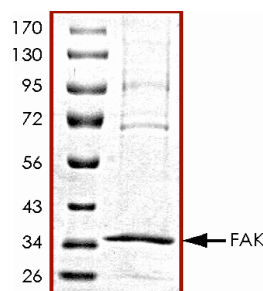
- Schaller, M D.: Biochemical signals and biological responses elicited by the focal adhesion kinase. *Biochim Biophys Acta*. 2001 Jul 25;1540(1):1-21.
- Gabarra-Niecko, V. et al: FAK regulates biological processes important for the pathogenesis of cancer. *Cancer Metastasis Rev*. 2003 Dec;22(4):359-74.

### Specific Activity



The specific activity of FAK was determined to be **230 nmol/min/mg** as per activity assay protocol.

### Purity



The purity was determined to be **>80%** by densitometry. Approx. MW **35kDa**.

## FAK, Active

Recombinant protein expressed in Sf9 cells

Catalog Number	P91-11H
Specific Activity	230 nmol/min/mg
Specific Lot Number	M180-2
Purity	>80%
Concentration	0.1 µg/µl
Stability	1 yr at -70°C from date of shipment
Storage & Shipping	Store product at -70°C. For optimal storage, aliquot target into smaller quantities after centrifugation and store at recommended temperature. For most favorable performance, avoid repeated handling and multiple freeze/thaw cycles. Product shipped on dry ice.

To place your order, please contact us by phone 1-(604)-232-4600, fax 1-604-232-4601 or by email: [orders@signalchem.com](mailto:orders@signalchem.com)  
[www.signalchem.com](http://www.signalchem.com)

**FOR IN VITRO RESEARCH PURPOSES ONLY. NOT INTENDED FOR USE IN HUMAN OR ANIMALS.**

# Activity Assay Protocol

## Reaction Components

### Active Kinase (Catalog #: P91-11H)

Active FAK (0.1µg/µl) diluted with Kinase Dilution Buffer IV (Catalog #: K24-09) and assayed as outlined in sample activity plot. (Note: these are suggested working dilutions and it is recommended that the researcher perform a serial dilution of Active FAK for optimal results).

### Kinase Dilution Buffer IV (Catalog #: K24-09)

Kinase Assay Buffer II (Catalog #: K02-09) diluted at a 1:4 ratio (5X dilution) with 50 ng/µl BSA solution.

### Kinase Assay Buffer II (Catalog #: K02-09)

Buffer components: 25mM MOPS pH 7.2, 12.5mM β-glycerol-phosphate, 20mM MgCl<sub>2</sub>, 12.5mM MnCl<sub>2</sub>, 5mM EGTA, 2mM EDTA. Add 0.25mM DTT to Kinase Assay Buffer prior to use.

### [<sup>33</sup>P]-ATP Assay Cocktail

Prepare 250µM [<sup>33</sup>P]-ATP Assay Cocktail in a designated radioactive working area by adding the following components: 150µl of 10mM ATP Stock Solution (Catalog #: A50-09), 100µl [<sup>33</sup>P]-ATP (1mCi/100µl), 5.75ml of Kinase Assay Buffer II (Catalog #: K02-09). Store 1ml aliquots at -20°C.

### 10mM ATP Stock Solution (Catalog #: A50-09)

Prepare ATP stock solution by dissolving 55mg of ATP in 10ml of Kinase Assay Buffer II (Catalog #: K02-09). Store 200µl aliquots at -20°C.

### Substrate (Catalog #: P61-58)

Poly (4:1 Glu, Tyr) synthetic peptide substrate diluted in distilled H<sub>2</sub>O to a final concentration of 1mg/ml. a final concentration of 1 mg/ml.

## Assay Protocol

- Step 1.** Thaw [<sup>33</sup>P]-ATP Assay Cocktail in shielded container in a designated radioactive working area.
- Step 2.** Thaw the Active FAK, Kinase Assay Buffer, Substrate and Kinase Dilution Buffer on ice.
- Step 3.** In a pre-cooled microfuge tube, add the following reaction components bringing the initial reaction volume up to 20µl:
  - Component 1.** 10µl of diluted Active FAK (Catalog # P91-11H)
  - Component 2.** 5µl of 1 mg/ml stock solution of substrate (Catalog # P61-58)
  - Component 3.** 5µl distilled H<sub>2</sub>O (4°C)
- Step 4.** Set up the blank control as outlined in step 3, excluding the addition of the substrate. Replace the substrate with an equal volume of distilled H<sub>2</sub>O.
- Step 5.** Initiate the reaction by the addition of 5µl [<sup>33</sup>P]-ATP Assay Cocktail bringing the final volume up to 25µl and incubate the mixture in a water bath at 30°C for 15 minutes.
- Step 6.** After the 15 minute incubation period, terminate the reaction by spotting 20µl of the reaction mixture onto individual pre-cut strips of phosphocellulose P81 paper.
- Step 7.** Air dry the pre-cut P81 strip and sequentially wash in a 1% phosphoric acid solution (dilute 10ml of phosphoric acid and make a 1L solution with distilled H<sub>2</sub>O) with constant gentle stirring. It is recommended that the strips be washed a total of 3 intervals for approximately 10 minutes each.
- Step 8.** Count the radioactivity on the P81 paper in the presence of scintillation fluid in a scintillation counter.
- Step 9.** Determine the corrected cpm by removing the blank control value (see Step 4) for each sample and calculate the kinase specific activity as outlined below.

### Calculation of [<sup>33</sup>P]-ATP Specific Activity (SA) (cpm/pmol)

Specific activity (SA) = cpm for 5µl [<sup>33</sup>P]-ATP / pmoles of ATP (in 5µl of a 250µM ATP stock solution, i.e., 1250 pmoles)

### Kinase Specific Activity (SA) (pmol/min/µg or nmol/min/mg)

Corrected cpm from reaction / [(SA of <sup>33</sup>P-ATP in cpm/pmol)\*(Reaction time in min)\*(Enzyme amount in µg or mg)]\*[(Reaction Volume) / (Spot Volume)]

To place your order, please contact us by phone 1-(604)-232-4600, fax 1-604-232-4601 or by email: [orders@signalchem.com](mailto:orders@signalchem.com)  
[www.signalchem.com](http://www.signalchem.com)

**FOR IN VITRO RESEARCH PURPOSES ONLY. NOT INTENDED FOR USE IN HUMAN OR ANIMALS.**