

Anti-PKCδ/θ

Rabbit Polyclonal Antibody

Catalog # P64-63DR

Lot # M191-1

Cited Applications

- Western blot (1:1000)

Ideal working dilutions for each application should be empirically determined by the investigator.

Specificity

Recognizes the PKCδ/θ protein

Cross Reactivity

- Western blot human PKCδ/θ

PKCδ/θ from other species may also be detectable

Host

Rabbit

Immunogen

Synthesized peptide derived from C-terminus of human PKCθ protein

Formulation

TBS, 50% glycerol

Stability

Store at 4°C (add 0.1% NaN₃) for several months, and at -20°C for longer periods. For optimal storage, aliquot antibody into smaller quantities after centrifugation and store at recommended temperature. For optimal performance, avoid repeated handling and multiple freeze/thaw cycles.

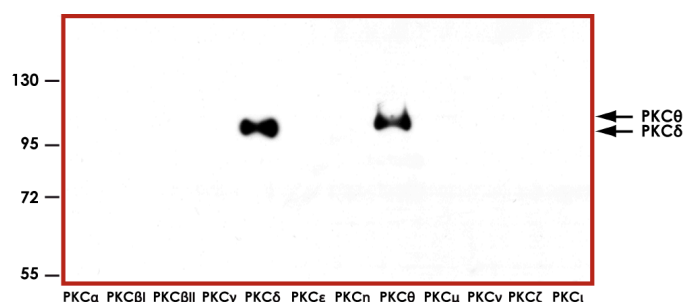
Scientific Background

Protein kinase C delta (PKCδ) is a member of the protein kinase C (PKC) family of serine-threonine kinases. It is a 79 kDa protein kinase that shows strict dependence on the presence of phospholipids, but shows no activation by Ca²⁺ (1). Protein kinase C theta (PKCθ) is important component in the intracellular signaling cascade (2). Recent studies have suggested that local accumulation of fat metabolites inside skeletal muscle may activate a serine kinase cascade involving PKC-theta leading to defects in insulin signaling and glucose transport in skeletal muscle (3).

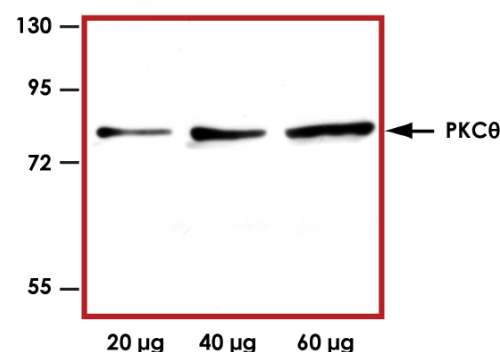
References

1. Leibersperger, H. et al: Immunological demonstration of a calcium-unresponsive protein kinase C of the delta-type in different species and murine tissues. Predominance in epidermis. J Biol Chem. 1991 Aug 5; 266(22):14778-84.
2. Manicassamy, S. and Sun, Z. The critical role of protein kinase C-theta in Fas/Fas ligand-mediated apoptosis. J. Immunol. 2007; 178(1):312-9.
3. Kim, J K. et al: PKC-theta knockout mice are protected from fat-induced insulin resistance. J. Clin. Invest. 2004; 114(6):823-7.

Sample Data



Representative Western blot with Anti-PKCδ/θ (1:1000) using 15ng of GST-tagged Human PKCα, PKCβ I, PKCβ II, PKCγ, PKCδ, PKCε, PKCη, PKCθ, PKCμ, PKCν, PKCζ and PKCι recombinant proteins.



Representative Western blot with PKCδ/θ (1:1000) using 20µg, 40µg, 60µg of Jurkat cell lysate.

Anti-PKCδ/θ

Rabbit Polyclonal Antibody

Catalog Number

P64-63DR

Specific Lot Number

M191-1

Purification

Affinity chromatography

Concentration

1.0 µg/µL

Stability

1yr at -20°C from date of shipment

Storage & Shipping

Store product at -20°C. For optimal storage, aliquot antibody into smaller quantities after centrifugation and store at recommended temperature. For optimal performance, avoid repeated handling and multiple freeze/thaw cycles. Product shipped on ice packs.

To place your order, please contact us by phone 1-(604)-232-4600, fax 1-604-232-4601 or by email: orders@signalchem.com
www.signalchem.com

FOR IN VITRO RESEARCH PURPOSES ONLY. NOT INTENDED FOR USE IN HUMAN OR ANIMALS.