

TYRO3, Active

Recombinant human protein expressed in Sf9 cells

Catalog # T22-11G

Lot # M2707-5

Product Description

Recombinant human TYRO3 (455-end) was expressed by baculovirus in Sf9 insect cells using an N-terminal GST tag. The gene accession number is [NM_006293](#).

Gene Aliases

BYK; RSE; Dtk; Sky; Tif; Brt

Formulation

Recombinant protein stored in 50mM Tris-HCl, pH 7.5, 150mM NaCl, 10mM glutathione, 0.1mM EDTA, 0.25mM DTT, 0.1mM PMSF, and 25% glycerol

Storage and Stability

Store product at -70°C. For optimal storage, aliquot target into smaller quantities after centrifugation and store at recommended temperature. For most favorable performance, avoid repeated handling and multiple freeze/thaw cycles.

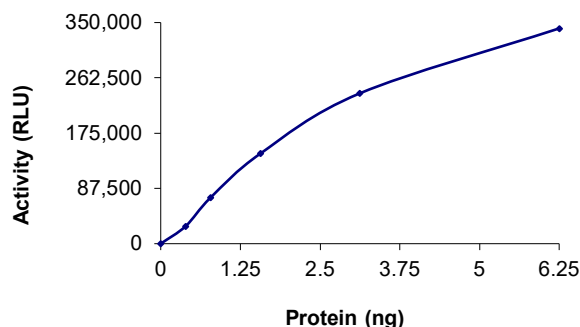
Scientific Background

TYRO3 receptor protein tyrosine kinase together with AXL and MER form the AXL/TYRO3 family of receptor tyrosine kinases (1). Members of this family play an essential role in spermatogenesis, immunoregulation, and phagocytosis. In addition to signal transduction, members of this family of receptor tyrosine kinases participate in cell adhesion (2). Gas6, a product of growth arrest-specific gene, activates the kinase activity of all three receptors. TYRO3 is expressed in the brain (where it is involved in the protection of neurons from apoptosis), expressed in lymphoid, vascular and reproductive tissue and in primary and tumor cell lines.

References

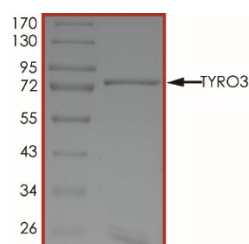
1. Angelillo-Scherrer, A. et al: Role of Gas6 receptors in platelet signaling during thrombus stabilization and implications for antithrombotic therapy. *J. Clin. Invest.* 2005; 115: 237-246.
2. Liao, X. et al: Receptor tyrosine kinase gene Tyro3 maps to mouse chromosome 2, closely linked to Ltk. *Mammalian Genome*, 1996. 7: 395-396.

Specific Activity



The specific activity of TYRO3 was determined to be **306 nmol/min/mg** as per activity assay protocol, and was equivalent to **162 nmol/min/mg** as per radiometric assay.

Purity



The purity of TYRO3 was determined to be **>80%** by densitometry, approx. MW **77kDa**.

TYRO3, Active

Recombinant human protein expressed in Sf9 cells

Catalog #	T22-11G
Specific Activity	306 nmol/min/mg
Lot #	M2707-5
Purity	>80%
Concentration	0.1 µg/µl
Stability	1yr at -70°C from date of shipment
Storage & Shipping	Store product at -70°C. For optimal storage, aliquot target into smaller quantities after centrifugation and store at recommended temperature. For most favorable performance, avoid repeated handling and multiple freeze/thaw cycles. Product shipped on dry ice.

To place your order, please contact us by phone 1-(604)-232-4600, fax 1-604-232-4601 or by email: orders@signalchem.com
www.signalchem.com

FOR IN VITRO RESEARCH PURPOSES ONLY. NOT INTENDED FOR USE IN HUMAN OR ANIMALS.

Activity Assay Protocol

Reaction Components

Active Kinase (Catalog #: T22-11G)

Active TYRO3 (0.1µg/µl) diluted with Kinase Dilution Buffer X (1x) (Catalog #: K20-09) and assayed as outlined in sample activity plot. (Note: these are suggested working dilutions and it is recommended that the researcher perform a serial dilution of active TYRO3 for optimal results).

Kinase Assay Buffer III (5x) (Catalog #: K03-09)

Buffer components: 200mM Tris-HCl, pH 7.4, 100mM MgCl₂ and 0.5mg/ml BSA. Add fresh DTT prior to use to a final concentration of 250µM.

Kinase Dilution Buffer X (1x) (Catalog #: K20-09)

Kinase Assay Buffer III (Catalog #: K03-09) with 0.1M MnCl₂ diluted at a 1:4 ratio (5X dilution) with cold water. Add fresh DTT to the aliquot prior to use to a final concentration of 50µM.

ADP-Glo™ Kinase Assay Kit (Promega, Cat # V9101)

ATP solution, 10 mM
ADP solution, 10 mM
ADP-Glo™ Reagent
Kinase Detection Reagent

Substrate (Catalog #: P61-58)

Poly (4:1 Glu, Tyr) synthetic peptide substrate diluted in distilled H₂O to a final concentration of 1mg/ml.

Cofactor: 2.5M MnCl₂ (Catalog #: M40-09-25)

Diluted to a working concentration of 0.1M in distilled H₂O.

Assay Protocol

The TYRO3 assay is performed using the ADP-Glo™ Kinase Assay kit (Promega; Cat# V9101) which quantifies the amount of ADP produced by the TYRO3 reaction. The ADP-Glo™ Reagent is added to terminate the kinase reaction and to deplete the remaining ATP, and then the Kinase Detection Reagent is added to convert ADP to ATP and to measure the newly synthesized ATP using luciferase/luciferin reaction.

- Step 1.** Thaw the Active TYRO3, Kinase Assay Buffer III (5x), and Substrate on ice. Prepare a 15 µL enzyme dilution at the desired concentration, with Kinase Dilution Buffer X (1x), in a pre-chilled 96-well plate.
- Step 2.** Prepare a substrate/ATP mixture as follows (25 µM example):

Component	Amount (µL)	Component	Amount (µL)
10mM ATP Solution	1.25	Substrate at 1mg/mL	50
Kinase Assay Buffer III (5x)	46.75	0.1M MnCl ₂	2

- Step 3.** Transfer the following reaction components prepared in Step 2 to a 384-well opaque plate bringing the reaction volume up to 5µL:

Component 1.	3µl of diluted Active TYRO3 (Catalog # T22-11G).
Component 2.	2µl of Substrate/ATP mix as prepared in the table above. This initiates the reaction.

- Step 4.** Set up the blank control as outlined in step 2, excluding the addition of the kinase. Replace the kinase with an equal volume of Kinase Dilution Buffer X (1x).
- Step 5.** Incubate at ambient temperature for 40 minutes.
- Step 6.** After the 40-minute incubation period, terminate the reaction and deplete the remaining ATP by adding 5µl of ADP-Glo™ Reagent. Spin down and shake the 384-well plate. Then incubate the reaction mixture for another 40 minutes at ambient temperature.
- Step 7.** Then add 10µl of the Kinase Detection Reagent to the 384-well plate and incubate the reaction mixture for another 30 minutes at ambient temperature.
- Step 8.** Read the 384-well reaction plate using the Luminescence Module Protocol on a GloMax®-Multi Microplate Multimode Reader (Promega; Cat# E7061).
- Step 9.** Determine the corrected activity (RLU) by removing the blank control value (see Step 4) for each sample and calculate the kinase specific activity as outlined below.

Calculation of Specific Activity of ADP (RLU/pmol)

From ADP standard curve, determine RLU/pmol of ADP

Kinase Specific Activity (SA) (pmol/min/µg or nmol/min/mg)

Corrected RLU from reaction / [(SA of ADP in RLU/pmol)*(Reaction time in min)*(Enzyme amount in µg or mg)

To place your order, please contact us by phone 1-(604)-232-4600, fax 1-604-232-4601 or by email: orders@signalchem.com
www.signalchem.com

FOR IN VITRO RESEARCH PURPOSES ONLY. NOT INTENDED FOR USE IN HUMAN OR ANIMALS.

MATERIAL SAFETY DATA SHEET

Article 1 - Product Identification and Use

Product Name: TYRO3, Active

Catalog # T22-11G

This product is sold only for research use by qualified laboratory personnel, and is not to be used as a drug, medical device, food additive, cosmetic, nor household chemical. It is not to be used in diagnostic, therapeutic, consumer, agricultural, nor pesticidal applications.

Manufacturer's Name:	SignalChem Pharmaceuticals Inc.
Street Address:	110-13120 Vanier Place
City, Prov. Postal Code:	Richmond, BC, V6V 2J2
Fax:	604-232-4601
EMERGENCY PHONE:	604-232-4600

Article 2 - Hazardous Ingredients

NOT AVAILABLE. We are not aware of any hazards associated with this product or its ingredients, but the chemical, physical, and toxicological properties of this product have not been investigated thoroughly. Observe normal laboratory precautions.

Article 3 - Physical Data

This product consists of purified protein in Tris-HCl buffer shipped on dry ice. The physical properties of this product have not been investigated thoroughly.

Article 4 - Fire and Explosion Hazard

NOT APPLICABLE

Article 5 - Reactivity Data

NOT APPLICABLE

Article 6 - Toxicologically Data

May be harmful by inhalation, ingestion, or skin absorption. The toxicological properties of this product have not been investigated thoroughly. Exercise due caution.

Article 7 - Preventative Measures

Wear chemical safety goggles and compatible chemical-resistant gloves. Avoid inhalation, contact with eyes, skin or clothing.

*****MULTIPLE COMPONENT SPILL OR LEAK PROCEDURES*****

- Wear protective equipment.
- Absorb on sand or vermiculite and place in closed containers for disposal.
- Observe all federal, state and local environmental regulations.

Article 8 - First Aid Measures

- If swallowed, wash out mouth with water, provided person is conscious. Call a physician.
- In case of skin contact, flush with copious amounts of water for at least 15 minutes. Remove contaminated clothing and shoes. If a rash or other irritation develops, call a physician.
- If inhaled, remove to fresh air. If breathing becomes difficult, call a physician.
- In case of eye contact, flush with copious amounts of water for at least 15 minutes while separating the eyelids with fingers. Call a physician.

Article 9 - Preparation

Prepared By: Mya Zhang

Phone #: 1-866-954-6273

The above information is believed to be correct but does not purport to be all-inclusive and shall be used only as a guide. SignalChem shall not be held liable for any damage resulting from handling or from contact with the above product. See the Technical Specification, Packing Slip, Invoice, and Product Catalog for additional terms and conditions of sale.

To place your order, please contact us by phone 1-(604)-232-4600, fax 1-604-232-4601 or by email: orders@signalchem.com
www.signalchem.com

FOR IN VITRO RESEARCH PURPOSES ONLY. NOT INTENDED FOR USE IN HUMAN OR ANIMALS.