

SGK1, Active

Recombinant human protein expressed in Sf9 cells

Catalog # S06-11H

Lot # M2778-9

Product Description

Recombinant human SGK1 (60-end) was expressed by baculovirus in Sf9 insect cells using an N-terminal His tag. The gene accession number is [NM_005627](#).

Gene Aliases

SGK

Formulation

Recombinant protein stored in 50mM sodium phosphate, pH 7.0, 300mM NaCl, 150mM imidazole, 0.1mM PMSF, 0.2mM DTT, and 25% glycerol.

Storage and Stability

Store product at -70°C . For optimal storage, aliquot target into smaller quantities after centrifugation and store at recommended temperature. For most favorable performance, avoid repeated handling and multiple freeze/thaw cycles.

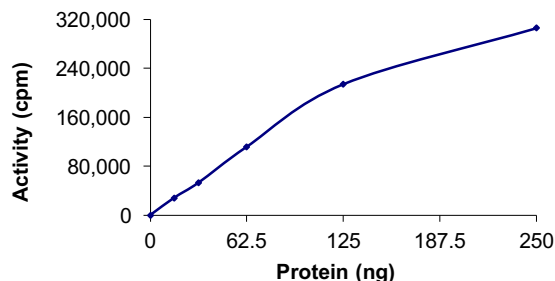
Scientific Background

SGK1 is a member of the serum- and glucocorticoid-induced protein kinase that is activated *in vitro* by 3-phosphoinositide-dependent protein kinase-1 (PDK1) and *in vivo* in response to signals that activate phosphatidylinositol (PI) 3-kinase (1). SGK1 mRNA is expressed in all tissues and the level of SGK1 mRNA is increased by stimulation with serum or dexamethasone. SGK1 promotes cell survival by phosphorylating and inactivating FKHL1 (2). SGK and Akt display differences with respect to the efficacy with which they phosphorylate the three regulatory sites on FKHL1.

References

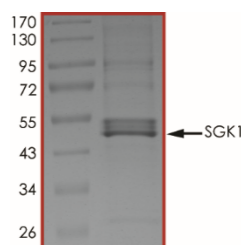
1. Kobayashii, T. et al: Characterization of the structure and regulation of two novel isoforms of serum- and glucocorticoid-induced protein kinase. *Biochem J.* 1999 Nov 15;344 Pt 1:189-97.
2. Brunet, A. et al: Protein kinase SGK mediates survival signals by phosphorylating the forkhead transcription factor FKHL1 (FOXO3a). *Mol Cell Biol.* 2001 Feb;21(3):952-65.

Specific Activity



The specific activity of SGK1 was determined to be **100 nmol /min/mg** as per activity assay protocol.

Purity



The purity was determined to be **>80%** by densitometry. Approx. MW **48-53 kDa**.

SGK1, Active

Recombinant protein expressed in Sf9 cells

Catalog #	S06-11H
Specific Activity	100 nmol/min/mg
Lot #	M2778-9
Purity	>80%
Concentration	0.1µg/µl
Stability	1yr at -70°C from date of shipment
Storage & Shipping	Store product at -70°C . For optimal storage, aliquot target into smaller quantities after centrifugation and store at recommended temperature. For most favorable performance, avoid repeated handling and multiple freeze/thaw cycles. Product shipped on dry ice.

To place your order, please contact us by phone 1-(604)-232-4600, fax 1-604-232-4601 or by email: orders@signalchem.com
www.signalchem.com

FOR IN VITRO RESEARCH PURPOSES ONLY. NOT INTENDED FOR USE IN HUMAN OR ANIMALS.
THE PRODUCT IS PROTECTED BY THE FOLLOWING PATENT/ APPLICATION: US 7, 083, 511

Activity Assay Protocol

Reaction Components

Active Kinase (Catalog #: S06-11H)

Active SGK1 (0.1µg/µl) diluted with Kinase Dilution Buffer I (Catalog #: K21-09) and assayed as outlined in sample activity plot. (Note: these are suggested working dilutions and it is recommended that the researcher perform a serial dilution of Active SGK1 for optimal results).

Kinase Dilution Buffer I (Catalog #: K21-09)

Kinase Assay Buffer I (Catalog #: K01-09) diluted at a 1:4 ratio (5X dilution) with distilled H₂O.

Kinase Assay Buffer I (Catalog #: K01-09)

Buffer components: 25mM MOPS, pH 7.2, 12.5mM β-glycerol-phosphate, 25mM MgCl₂, 5mM EGTA, 2mM EDTA. Add 0.25mM DTT to Kinase Assay Buffer prior to use.

[³³P]-ATP Assay Cocktail

Prepare 250µM [³³P]-ATP Assay Cocktail in a designated radioactive working area by adding the following components: 150µl of 10mM ATP Stock Solution (Catalog #: A50-09), 100µl [³³P]-ATP (1mCi/100µl), 5.75ml of Kinase Assay Buffer I (Catalog #: K01-09). Store 1ml aliquots at -20°C.

10mM ATP Stock Solution (Catalog #: A50-09)

Prepare ATP stock solution by dissolving 55mg of ATP in 10ml of Kinase Assay Buffer I (Catalog #: K01-09). Store 200µl aliquots at -20°C.

Substrate (Catalog #: A05-58)

Akt (PKB) peptide substrate (CKRPRAASFAE) diluted in distilled H₂O to a final concentration of 1mg/ml.

Assay Protocol

- Step 1.** Thaw [³³P]-ATP Assay Cocktail in shielded container in a designated radioactive working area.
- Step 2.** Thaw the Active SGK1, Kinase Assay Buffer, Substrate and Kinase Dilution Buffer on ice.
- Step 3.** In a pre-cooled microfuge tube, add the following reaction components bringing the initial reaction volume up to 20µl:
 - Component 1.** 10µl of diluted Active SGK1 (Catalog #S06-11H)
 - Component 2.** 5µl of 1mg/ml stock solution of substrate (Catalog #A05-58)
 - Component 3.** 5µl distilled H₂O (4°C)
- Step 4.** Set up the blank control as outlined in step 3, excluding the addition of the substrate. Replace the substrate with an equal volume of distilled H₂O.
- Step 5.** Initiate the reaction by the addition of 5µl [³³P]-ATP Assay Cocktail bringing the final volume up to 25µl and incubate the mixture in a water bath at 30°C for 15 minutes.
- Step 6.** After the 15 minute incubation period, terminate the reaction by spotting 20µl of the reaction mixture onto individual pre-cut strips of phosphocellulose P81 paper.
- Step 7.** Air dry the pre-cut P81 strip and sequentially wash in a 1% phosphoric acid solution (dilute 10ml of phosphoric acid and make a 1L solution with distilled H₂O) with constant gentle stirring. It is recommended that the strips be washed a total of 3 intervals for approximately 10 minutes each.
- Step 8.** Count the radioactivity on the P81 paper in the presence of scintillation fluid in a scintillation counter.
- Step 9.** Determine the corrected cpm by removing the blank control value (see Step 4) for each sample and calculate the kinase specific activity as outlined below.

Calculation of [³³P]-ATP Specific Activity (SA) (cpm/pmol)

Specific activity (SA) = cpm for 5µl [³³P]-ATP / pmoles of ATP (in 5µl of a 250µM ATP stock solution, i.e., 1250 pmoles)

Kinase Specific Activity (SA) (pmol/min/µg or nmol/min/mg)

Corrected cpm from reaction / [(SA of ³³P-ATP in cpm/pmol)*(Reaction time in min)*(Enzyme amount in µg or mg)]*[(Reaction Volume) / (Spot Volume)]

To place your order, please contact us by phone 1-(604)-232-4600, fax 1-604-232-4601 or by email: orders@signalchem.com
www.signalchem.com

FOR IN VITRO RESEARCH PURPOSES ONLY. NOT INTENDED FOR USE IN HUMAN OR ANIMALS.
THE PRODUCT IS PROTECTED BY THE FOLLOWING PATENT/ APPLICATION: US 7, 083, 511