

## Anti-UBE2N (UBC13)

Rabbit Polyclonal Antibody

**Catalog # U231-63R**

Lot # O2109-31

### Cited Applications

WB, ELISA, IF, IHC

*Ideal working dilutions for each application should be empirically determined by the investigator.*

### Specificity

Recognizes the UBE2N (UBC13) protein

### Cross Reactivity

Human, Mouse and Rat

### Host/Isotype/Clone#

Rabbit, IgG

### Immunogen

UBE2N (UBC13) antibody was raised against a peptide corresponding to 15 amino acids near the C-terminus of human UBE2N (UBC13).

### Formulation

PBS + 0.02% sodium azide

### Stability

1yr at -20°C from date of shipment

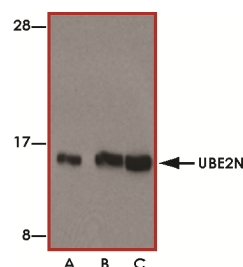
### Scientific Background

UBE2N (UBC13) or ubiquitin-conjugating enzyme E2N is a member of the E2 ubiquitin-conjugating enzyme family which plays a role in DNA post-replication repair. UBE2N gene encodes a novel human E2 that may be involved in protein degradation in the muscles and testis (1). UBE2N plays a role in initiation of homologous recombination during double-strand break repair (2). UBE2N activity may have therapeutic uses in controlling inflammatory responses and it is also important in the induction of immune responses.

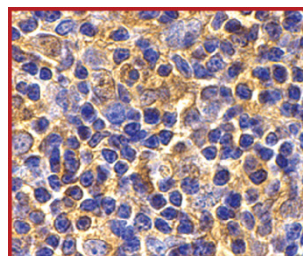
### References

1. Yamaguchi, T. et.al: Cloning and expression of cDNA encoding a human ubiquitin-conjugating enzyme similar to the Drosophila bendless gene product. J. Biochem. 120: 494-497, 1996.
2. Zhao, G. Y. et.al: A critical role for the ubiquitin-conjugating enzyme Ubc13 in initiating homologous recombination. Molec. Cell 25: 663-675, 2007.

### Sample Data



Western blot analysis of UBE2N in human small intestine cell lysates with UBE2N antibody at (A) 0.5, (B) 1, and (C) 2 ug/ml.



Immunohistochemistry of UBE2N in mouse thymus tissue with UBE2N antibody at 2 ug/ml.

## Anti-UBE2N (UBC13)

Rabbit Polyclonal Antibody

Catalog Number

**U231-63R**

Specific Lot Number

**O2109-31**

Purification

Affinity chromatography

Stability

1yr at -20°C from date of shipment

Storage & Shipping

Store product at -20°C. For optimal storage, aliquot antibody into smaller quantities after centrifugation and store at recommended temperature. For optimal performance, avoid repeated handling and multiple freeze/thaw cycles. Product shipped on ice packs.

To place your order, please contact us by phone 1-(604)-232-4600, fax 1-604-232-4601 or by email: [orders@signalchem.com](mailto:orders@signalchem.com)  
[www.signalchem.com](http://www.signalchem.com)

**FOR IN VITRO RESEARCH PURPOSES ONLY. NOT INTENDED FOR USE IN HUMAN OR ANIMALS.**