

## Anti-phospho-Tau (Thr212)

Rabbit Polyclonal Antibody

**Catalog # T08-365JR**

Lot # O2206-8

### Cited Applications

WB

*Suggested Dilutions:*

WB: 1:500~1:1000

*Ideal working dilutions for each application should be empirically determined by the investigator.*

### Specificity

Recognizes endogenous levels of Tau only when phosphorylated at threonine 212

### Cross Reactivity

Human, Mouse and Rat

### Host/Isotype/Clone#

Rabbit, IgG

### Immunogen

The antibody was produced against synthesized phosphopeptide derived from human Tau around the phosphorylation site of threonine 212 (S-R-TP-P-S)

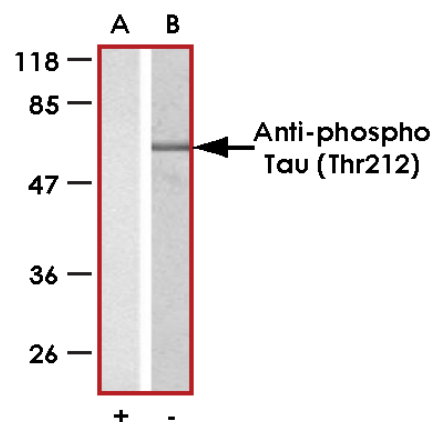
### Formulation

PBS + 0.02% sodium azide

### Stability

1yr at -20°C from date of shipment

### Sample Data



Western blot analysis of extract from mouse brain tissue using Anti-phospho-Tau (Thr212) antibody (Lanes A and B)

## Anti-phospho-Tau (Thr212)

Rabbit Polyclonal Antibody

Catalog Number

T08-365JR

Specific Lot Number

O2206-8

Purification

Affinity chromatography

Stability

1yr at -20°C from date of shipment

Storage & Shipping

Store product at -20°C. For optimal storage, aliquot antibody into smaller quantities after centrifugation and store at recommended temperature. For optimal performance, avoid repeated handling and multiple freeze/thaw cycles. Product shipped on ice packs.

To place your order, please contact us by phone 1-(604)-232-4600, fax 1-604-232-4601 or by email: [orders@signalchem.com](mailto:orders@signalchem.com)  
[www.signalchem.com](http://www.signalchem.com)

**FOR IN VITRO RESEARCH PURPOSES ONLY. NOT INTENDED FOR USE IN HUMAN OR ANIMALS.**