

Anti-APC1

Rabbit Polyclonal Antibody

Catalog # A87-363R

Lot # O2361-1

Cited Applications

E, WB, IHC

Ideal working dilutions for each application should be empirically determined by the investigator.

Specificity

Recognizes the APC1 protein

Cross Reactivity

Human and Mouse

Host/Isotype/Clone#

Rabbit, IgG

Immunogen

APC1 antibody was raised against a 17 amino acid synthetic peptide near the carboxy terminus of human APC1

Formulation

PBS + 0.02% sodium azide.

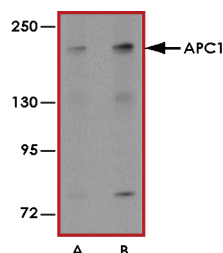
Stability

1yr at -20°C from date of shipment.

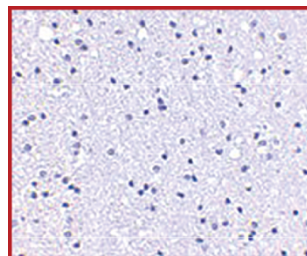
References

1. Yu PW. et al: Identification of RIP3, a RIP-like kinase that activates apoptosis and NF- κ B. *Curr Biol.* 1999;9(10):539-42.
2. Peters JM: The anaphase promoting complex/cyclosome: a machine designed to destroy. *Nat. Rev. Mol. Cell Biol.* 2006; 7:644-56.
3. Jorgensen PM et al: Characterisation of the human APC1, the largest subunit of the anaphase-promoting complex. *Gene* 2001; 262:51-9.

Sample Data



Western blot analysis of APC1 in SK-N-SH cell lysate with APC1 antibody at (A) 1 and (B) 2 µg/mL.



Immunohistochemistry of APC1 in human brain tissue with APC1 antibody at 5 µg/mL.

Anti-APC1

Rabbit Polyclonal Antibody

Catalog Number

A87-363R

Specific Lot Number

O2361-1

Purification

Affinity chromatography

Stability

1yr at -20°C from date of shipment

Storage & Shipping

Store product at -20°C. For optimal storage, aliquot antibody into smaller quantities after centrifugation and store at recommended temperature. For optimal performance, avoid repeated handling and multiple freeze/thaw cycles. Product shipped on ice packs.

To place your order, please contact us by phone 1-(604)-232-4600, fax 1-604-232-4601 or by email: orders@signalchem.com
www.signalchem.com

FOR IN VITRO RESEARCH PURPOSES ONLY. NOT INTENDED FOR USE IN HUMAN OR ANIMALS.