

Anti-DYRK1A

Rabbit Polyclonal Antibody

Catalog # D09-63R

Lot # O2361-24

Cited Applications

ELISA, WB, IF

Ideal working dilutions for each application should be empirically determined by the investigator.

Specificity

Recognizes the DYRK1A protein

Cross Reactivity

Human and Mouse

Host/Isotype/Clone#

Rabbit, IgG

Immunogen

DYRK1A antibody was raised against a 17 amino acid synthetic peptide near the carboxy terminus of human DYRK1A.

Formulation

PBS + 0.02% sodium azide.

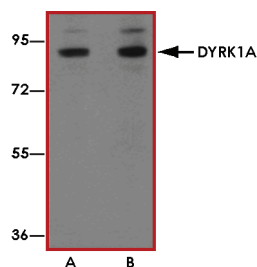
Stability

1yr at -20°C from date of shipment.

References

1. Park J et al: Two key genes closely implicated with the neuropathological characteristics in Down Syndrome: DYRK1A and RCAN1. BMB Reports 2009; 42:6-15.
2. Park J et al: Dyrk1A phosphorylates p53 and inhibits proliferation of embryonic neuronal cells. J. Biol. Chem. 2010; 285:31895-906
3. Li D et al: Direct association of Sprouty-related protein with and EVH1 domain (SPRED) 1 or SPRED2 with DYRK1A modifies substrate/kinase interactions. J. Biol. Chem. 2010; 285:35374-85.

Sample Data



Western blot analysis of DYRK1A in HeLa cell lysate with DYRK1A antibody at (A) 1 and (B) 2 µg/mL.



Immunocytochemistry of DYRK1A in HeLa cells with DYRK1A antibody at 10 µg/mL.

Anti-DYRK1A

Rabbit Polyclonal Antibody

Catalog Number

D09-63R

Specific Lot Number

O2361-24

Purification

Affinity chromatography

Stability

1yr at -20°C from date of shipment

Storage & Shipping

Store product at -20°C. For optimal storage, aliquot antibody into smaller quantities after centrifugation and store at recommended temperature. For optimal performance, avoid repeated handling and multiple freeze/thaw cycles. Product shipped on ice packs.

To place your order, please contact us by phone 1-(604)-232-4600, fax 1-604-232-4601 or by email: orders@signalchem.com

www.signalchem.com

FOR IN VITRO RESEARCH PURPOSES ONLY. NOT INTENDED FOR USE IN HUMAN OR ANIMALS.