

## Anti-KDM8

Rabbit Polyclonal Antibody

**Catalog # K428-63R**

Lot # O2361-32

### Cited Applications

E, WB, IHC, IF

*Ideal working dilutions for each application should be empirically determined by the investigator.*

### Specificity

Recognizes the KDM8 protein

### Cross Reactivity

Human, Mouse and Rat

### Host/Isotype/Clone#

Rabbit, IgG

### Immunogen

KDM8 antibody was raised against an 18 amino acid synthetic peptide from near the carboxy terminus of human KDM8

### Formulation

PBS + 0.02% sodium azide.

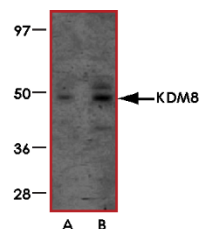
### Stability

1yr at -20°C from date of shipment.

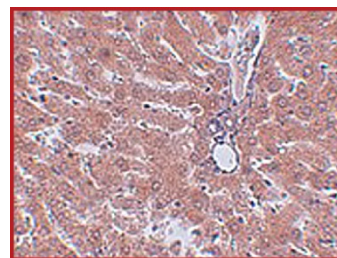
### References

1. Takeuchi T et al: Roles of jumonji and jumonji family genes in chromatin regulation and development. Dev. Dyn.2006; 235:2449-59. Agger K et al: UTX and JMJD3 are histone H3K27 demethylases involved in HOX gene regulation and development. Nature 2007; 449:731-4.

### Sample Data



Western blot analysis of KDM8 in human liver tissue lysate with KDM8 antibody at (A) 1 and (B) 2 ug/mL.



Immunohistochemistry of KDM8 in rat liver tissue with KDM8 antibody at 2.5 ug/mL.

## Anti-KDM8

Rabbit Polyclonal Antibody

Catalog Number

**K428-63R**

Specific Lot Number

**O2361-32**

Purification

Affinity chromatography

Stability

1yr at -20°C from date of shipment

Storage & Shipping

Store product at -20°C. For optimal storage, aliquot antibody into smaller quantities after centrifugation and store at recommended temperature. For optimal performance, avoid repeated handling and multiple freeze/thaw cycles. Product shipped on ice packs.

To place your order, please contact us by phone 1-(604)-232-4600, fax 1-604-232-4601 or by email: [orders@signalchem.com](mailto:orders@signalchem.com)  
[www.signalchem.com](http://www.signalchem.com)

**FOR IN VITRO RESEARCH PURPOSES ONLY. NOT INTENDED FOR USE IN HUMAN OR ANIMALS.**