

Anti-APC2

Rabbit Polyclonal Antibody

Catalog # A88-363R

Lot # O2361-5

Cited Applications

E, WB, ICC, IF

Ideal working dilutions for each application should be empirically determined by the investigator.

Specificity

Recognizes the APC2 protein

Cross Reactivity

Human and Mouse

Host/Isotype/Clone#

Rabbit, IgG

Immunogen

APC2 antibody was raised against an 18 amino acid synthetic peptide near the center of human APC2

Formulation

PBS + 0.02% sodium azide.

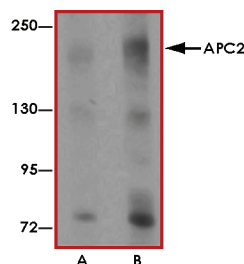
Stability

1yr at -20°C from date of shipment.

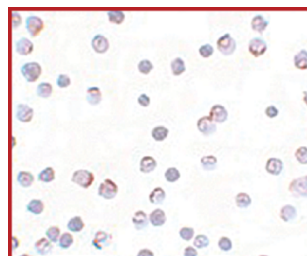
References

1. Peters JM: The anaphase promoting complex/cyclosome: a machine designed to destroy. Nat. Rev. Mol. Cell Biol.2006; 7:644-56.
2. Jorgensen PM et al: Characterisation of the human APC1, the largest subunit of the anaphase-promoting complex. Gene2001; 262:51-9.
3. Yu H et al: Identification of a cullin homology region in a subunit of the anaphase-promoting complex. Science1998; 279:1219-22.
4. Zacharie W et al: Mass spectrometric analysis of the anaphase-promoting complex from yeast: identification of a subunit related to cullins. Science1998; 1216-19.

Sample Data



Western blot analysis of APC2 in HeLa cell lysate with APC2 antibody at (A) 1 and (B) 2 µg/mL.



Immunocytochemistry of APC2 in HeLa cells with APC2 antibody at 5 µg/mL.

Anti-APC2

Rabbit Polyclonal Antibody

Catalog Number

A88-363R

Specific Lot Number

O2361-5

Purification

Affinity chromatography

Stability

1yr at -20°C from date of shipment

Storage & Shipping

Store product at -20°C. For optimal storage, aliquot antibody into smaller quantities after centrifugation and store at recommended temperature. For optimal performance, avoid repeated handling and multiple freeze/thaw cycles. Product shipped on ice packs.

To place your order, please contact us by phone 1-(604)-232-4600, fax 1-604-232-4601 or by email: orders@signalchem.com
www.signalchem.com

FOR IN VITRO RESEARCH PURPOSES ONLY. NOT INTENDED FOR USE IN HUMAN OR ANIMALS.