

PRMT2 Protein

Recombinant full-length human protein expressed in Sf9 cells

Catalog # P365-30BG

Lot # P1737-3

Product Description

Recombinant full-length human PRMT2 was expressed by baculovirus in Sf9 insect cells using an N-terminal GST tag. The PRMT2 gene accession number is [BC000727](#).

Gene Aliases

HMT1, HRMT1L

Formulation

Recombinant protein stored in 50mM Tris-HCl, pH 7.5, 150mM NaCl, 10mM glutathione, 0.1mM EDTA, 0.25mM DTT, 0.1mM PMSF, 25% glycerol.

Storage and Stability

Store product at -70°C. For optimal storage, aliquot target into smaller quantities after centrifugation and store at recommended temperature. For most favorable performance, avoid repeated handling and multiple freeze/thaw cycles.

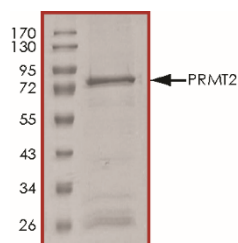
Scientific Background

PRMT2, protein arginine methyltransferase 2, arginine methyltransferase that methylates the guanidino nitrogens of arginyl residues in proteins such as STAT3, FBL, histone H4. PRMT2 acts as an ER α -binding protein and enhances both its AF-1 and AF-2 transcriptional activity. Inhibit NF-kappa-B transcription by blocking nuclear export of I kappa B-alpha through a leptomycin-sensitive pathway, increasing nuclear I kappa B-alpha and decreasing NF-kappa B DNA binding, which in turn renders cells susceptible to apoptosis.

References

1. Qi C, et al: Identification of protein arginine methyltransferase 2 as a coactivator for estrogen receptor alpha. J Biol Chem. 277(32):28624-30, 2002.
2. Ganesh L, et al: Protein methyltransferase 2 inhibits NF-kappa B function and promotes apoptosis. Mol Cell Biol. 26(10):3864-74, 2006.

Purity



The purity of PRMT2 was determined to be **>90%** by densitometry, approx. MW **76 kDa**.

PRMT2 Protein

Recombinant full-length human protein expressed in Sf9 cells

Catalog #	P365-30BG
Number #	P1737-3
Purity	>90%
Concentration	0.05 µg/µl
Stability	1yr at -70°C from date of shipment
Storage & Shipping	Store product at -70°C. For optimal storage, aliquot target into smaller quantities after centrifugation and store at recommended temperature. For most favorable performance, avoid repeated handling and multiple freeze/thaw cycles. Product shipped on dry ice.