

CPH2

Epigenetic Enzyme Inhibitor

Catalog # K311-903B

Lot # P3320-11

CAS # 357649-93-5

Product Description

Molecular Formula: C₁₄H₁₄ClN₃S

Appearance: white powder

Molecular Weight: 291.80

Purity: >98% (TLC); NMR (Conforms)

Solubilization: May be dissolved in DMSO (>25 mg/ml)

Alias

Cyclopentylidene-[4-(4'-chlorophenyl)thiazol-2-yl]hydrazone

Specific Activity

HAT Inhibitor

Storage and Stability

Store desiccated as supplied at -20°C for up to 2 years.

Store solutions at -20°C for up to one month.

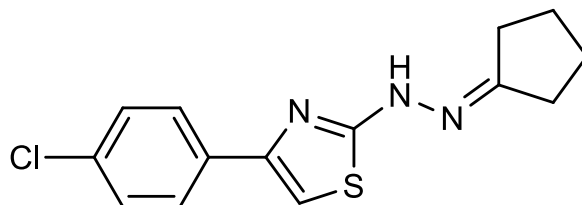
Scientific Background

CPH2 is a selective inhibitor of the histone acetyltransferase Gcn5P both *in vitro* and *in vivo* (IC₅₀ = 0.800 μM)¹. *In vitro*, the HAT inhibitory activity of CPH2 was caused via bridge-interaction with histone H3. *In vivo* it decreased acetylation of bulk histone H3 at the H3-AcK14 site.

References

1. F Chimenti et al. J. Med. Chem. 2009 52:530

Molecular Structure



CPH2

Epigenetic Enzyme Inhibitor

Catalog #	K311-903B
CAS #	357649-93-5
Lot #	P3320-11
Purity	>98% (TLC)
Format	white powder
Solubilization	May be dissolved in DMSO (>25 mg/ml)
Storage & Shipping	Store desiccated as supplied at -20°C for up to 2 years. Store solutions at -20°C for up to one month.

To place your order, please contact us by phone 1-(604)-232-4600, fax 1-604-232-4601 or by email: orders@signalchem.com
www.signalchem.com

FOR IN VITRO RESEARCH PURPOSES ONLY. NOT INTENDED FOR USE IN HUMAN OR ANIMALS.