

## PIK3C2A, Active

Recombinant human protein expressed in Sf9 cells

**Catalog # P23-112G**

Lot # Q2285-6

### Product Description

Recombinant human PIK3C2A (299-end) was expressed by baculovirus in Sf9 insect cells using an N-terminal GST tag. The gene accession number is [NM\\_002645](#).

### Gene Aliases

PI3K-C2 (ALPHA), PI3-K-C2A, DKFZp686L193, CPK, MGC142218

### Formulation

Recombinant protein stored in 50mM Tris-HCl, pH 7.5, 150mM NaCl, 10mM glutathione, 0.1mM EDTA, 0.25mM DTT, 0.1mM PMSF, 25% glycerol.

### Storage and Stability

Store product at -70°C. For optimal storage, aliquot target into smaller quantities after centrifugation and store at recommended temperature. For most favorable performance, avoid repeated handling and multiple freeze/thaw cycles.

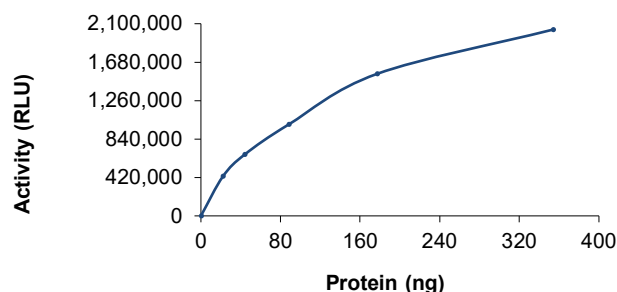
### Scientific Background

PIK3C2A belongs to the phosphoinositide 3-kinase (PI3K) family which play roles in signaling pathways involved in cell proliferation, oncogenic transformation, cell survival, cell migration, and intracellular protein trafficking. PIK3C2A can phosphorylate phosphatidylinositol and phosphatidylinositol-4-phosphate in vitro (1). PIK3C2A contains a lipid kinase catalytic domain as well as a C-terminal C2 domain, a characteristic of class II PI3-kinases that act as calcium-dependent phospholipid binding motifs that mediate translocation of proteins to membranes, and may also mediate protein-protein interactions (2).

### References

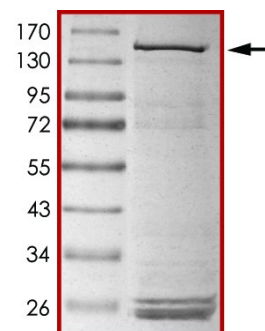
1. Domin, J. et.al: Cloning of a human phosphoinositide 3-kinase with a C2 domain that displays reduced sensitivity to the inhibitor wortmannin. *Biochem. J.* 326: 139-147, 1997.
2. Molz, L. et.al: Cpk is a novel class of Drosophila PtdIns 3-kinase containing a C2 domain. *J. Biol. Chem.* 271: 13892-13899, 1996.

### Specific Activity



The specific activity of PIK3C2A was determined to be **1,267 nmol/min/mg** as per activity assay protocol.

### Purity



The purity of PIK3C2A was determined to be **>90%** by densitometry. Approx. MW **155 kDa**.

## PIK3C2A, Active

Recombinant human protein expressed in Sf9 cells

Catalog #	P23-112G
Specific Activity	1,267 nmol/min/mg
Lot #	Q2285-6
Purity	>90%
Concentration	0.1 µg/µl
Stability	1yr at -70°C from date of shipment
Storage & Shipping	Store product at -70°C. For optimal storage, aliquot target into smaller quantities after centrifugation and store at recommended temperature. For most favorable performance, avoid repeated handling and multiple freeze/thaw cycles. Product shipped on dry ice.

To place your order, please contact us by phone 1-866-9KINASE (54-6273), 1-(604)-232-4600, fax 1-604-232-4601 or by email: [orders@signalchem.com](mailto:orders@signalchem.com) - [www.signalchem.com](http://www.signalchem.com)

**FOR IN VITRO RESEARCH PURPOSES ONLY. NOT INTENDED FOR USE IN HUMAN OR ANIMALS.**

# Activity Assay Protocol

## Reaction Components

### Active Kinase (Catalog #: P23-112G)

Active PIK3C2A (0.1µg/µl) diluted with 1x Lipid Kinase Buffer (Catalog #: L01-09) and assayed as outlined in sample activity plot. (Note: these are suggested working dilutions and it is recommended that the researcher perform a serial dilution of Active PIK3C2A for optimal results).

### Lipid Kinase Buffer (5x) (Catalog #: L01-09)

250mM HEPES pH 7.5, 250mM NaCl, 10mM MgCl<sub>2</sub>, 2.5mM EGTA, 125µg/mL BSA and 0.2% Triton X-100. Dilute to 1x and add 0.05mM fresh DTT prior to use.

### Lipid Dilution Buffer (1x) (Catalog #: L21-09)

25mM HEPES pH 7.5 and 0.5mM EGTA.

### ADP-Glo™ Kinase Assay Kit (Promega, Cat # V9101)

ATP solution, 10 mM  
ADP solution, 10 mM  
ADP-Glo™ Reagent  
Kinase Detection Reagent

**1M MgCl<sub>2</sub> Solution** – Required for ADP-Glo reaction

### 250 µM ATP Assay Solution

Prepare the ATP assay solution by diluting ATP solution, 10 mM (Promega, Cat # V9101) to 250 µM in 1x Lipid Assay Buffer (prepared from Lipid Kinase Buffer 5x; Catalog #: L01-09).

### Substrate (Catalog #: P425-59)

PI:PS substrate solution contains 250µM of PI and 2000µM of PS in 1x Lipid Dilution Buffer.

## Assay Protocol

The PIK3C2A assay is performed using the ADP-Glo™ Kinase Assay kit (Promega; Cat# V9101) which quantifies the amount of ADP produced by the PIK3C2A reaction. The ADP-Glo™ Reagent is added to terminate the kinase reaction and to deplete the remaining ATP, and then the Kinase Detection Reagent is added to convert ADP to ATP and to measure the newly synthesized ATP using luciferase/luciferin reaction.

**Step 1.** Thaw the Active PIK3C2A, Lipid Kinase Buffer, Substrate and Lipid Dilution Buffer on ice.

**Step 2.** In a pre-cooled 96-well opaque plate, add the following reaction components bringing the initial reaction volume up to 20µl:

- |                     |   |
|---------------------|---|
| <b>Component 1.</b> | 10µl of diluted Active PIK3C2A (Catalog #P23-112G)          |
| <b>Component 2.</b> | 5µl of PI:PS substrate (sonicate for 1 minute prior to use) |
| <b>Component 3.</b> | 5µl of 1x Lipid Kinase Buffer                               |

**Step 3.** Set up the blank control as outlined in step 2, excluding the addition of the substrate. Replace the substrate with an equal volume of Lipid Dilution Buffer.

**Step 4.** Initiate the reaction by the addition of 5µl of 250 µM ATP Assay Solution thereby bringing the final volume up to 25µl. Shake the reaction mixture in the 96-well opaque plate for 2 minutes and continue the incubation at 30°C for 40 minutes.

**Step 5.** After the 40 minute incubation period, terminate the reaction and deplete the remaining ATP by adding 25µl of ADP-Glo™ Reagent with 10mM MgCl<sub>2</sub>. Shake the 96-well plate and then incubate the reaction mixture for another 40 minutes at ambient temperature.

**Step 6.** Then add 50µl of the Kinase Detection Reagent to the 96-well plate and incubate the reaction mixture for another 30 minutes at ambient temperature.

**Step 7.** Read the 96-well reaction plate using the KinaseGlo Luminescence Protocol on a GloMax plate reader (Promega; Cat# E7031).

**Step 8.** Determine the corrected activity (RLU) by removing the blank control value (see Step 3) for each sample and calculate the kinase specific activity as outlined below.

### Calculation of Specific Activity of ADP (RLU/pmol)

From ADP standard curve, determine RLU/pmol of ADP

### Kinase Specific Activity (SA) (pmol/min/µg or nmol/min/mg)

Corrected RLU from reaction / [(SA of ADP in RLU/pmol)\*(Reaction time in min)\*(Enzyme amount in µg or mg)]

To place your order, please contact us by phone 1-866-9KINASE (54-6273), 1-(604)-232-4600, fax 1-604-232-4601 or by email: [orders@signalchem.com](mailto:orders@signalchem.com) - [www.signalchem.com](http://www.signalchem.com)

**FOR IN VITRO RESEARCH PURPOSES ONLY. NOT INTENDED FOR USE IN HUMAN OR ANIMALS.**

# SAFETY DATA SHEET

## Article 1 – Product Identification

**Product Name: PIK3C2A, Active****Catalog # P23-112G**

*This product is sold only for research use by qualified laboratory personnel, and is not to be used as a drug, medical device, food additive, cosmetic, nor household chemical. It is not to be used in diagnostic, therapeutic, consumer, agricultural, nor pesticidal applications.*

Manufacturer's Name: SignalChem Biotech Inc.  
Street Address: 110-13120 Vanier Place  
City, Prov. Postal Code: Richmond, BC, V6V 2J2  
Fax: 604-232-4601  
EMERGENCY PHONE: 604-232-4600

## Article 2 - Hazard Identification

- **WHMIS Classification:** Not WHMIS controlled.
- **GHS classification:** Skin irritation (Category 3); Eye irritation (Category 2B).
- **Hazard Pictograms:** none.
- **Signal words:** Warning.
- **Hazard statements:** Causes mild skin irritation (H316); Causes eye irritation (H320).
- **Precautionary statements:** IF IN EYES: Rinse cautiously with water for several minutes. Remove contact lenses, if present and easy to do. Continue rinsing. (P305 + P351 + P338).
- **Other hazards:** none known.

## Article 3 – Composition/Information on Ingredients

**Chemical Characterization:** Mixtures.

**Description:** This product consists of the substances listed below.

Common name	Chemical name	CAS-No.	Concentration
Glycerol	Glycerol	56-81-5	≤25%
NaCl	Sodium chloride	7647-14-5	≤1.753 %
Tris-HCl; Tris (hydroxymethyl) aminomethane hydrochloride	2 - Amino - 2 - (hydroxymethyl) propane - 1, 3 - diol hydrochloride	1185-53-1	<0.8%
Glutathione	Glutathione	70-18-8	0.307%
Protein		No data available	≤0.02%
DTT; Dithiothreitol	(R*,R*)-1,4-Dimercaptobutane-2,3-diol	3483-12-3	0.0038%
EDTA	Ethylenediaminetetraacetic acid	6381-92-6	0.0037%
PMSF; Phenylmethanesulfonyl fluoride	α-Toluenesulphonyl fluoride	329-98-6	0.002%

## Article 4 – First-aid Measures

- **General information:** Consult a physician by providing the SDS.
- **After inhalation:** Breathe in fresh air. If cannot breathe, give artificial respiration and consult a physician.
- **After skin contact:** Immediately wash with soap and plenty of water and rinse thoroughly. Consult a physician.
- **After eye contact:** Rinse opened eyes with plenty of water for at least 15 minutes. Consult a physician.
- **After swallowing:** rinse the mouth with plenty of water and consult a physician.

## Article 5 - Fire-fighting Measures

- **Suitable extinguishing media:** Use water spray, extinguishing powder, carbon dioxide, or other appropriate measure that is suitable to the environment.
- **Specific hazards arising from the substance or mixture:** None known.
- **Special protective equipment and precautions for fire-fighters:** Self-contained breathing apparatus if necessary.

To place your order, please contact us by phone 1-866-9KINASE (54-6273), 1-(604)-232-4600, fax 1-604-232-4601 or by email: [orders@signalchem.com](mailto:orders@signalchem.com) - [www.signalchem.com](http://www.signalchem.com)

**FOR IN VITRO RESEARCH PURPOSES ONLY. NOT INTENDED FOR USE IN HUMAN OR ANIMALS.**

# SAFETY DATA SHEET

## Article 6 – Accidental Release Measures

- **Personal precautions, protective equipment and emergency procedures:** Apply standard laboratory practices and personal protective equipment. Avoid breathing vapors, mist, or gas. Ensure adequate ventilation.
- **Environmental precautions:** Do not allow to enter drains.
- **Methods and materials for containment and cleaning up:** Absorb on sand or vermiculite and place in closed containers for disposal.

## Article 7 - Handling and Storage

- **Precautions for safe handling:** Wear chemical safety goggles and compatible chemical-resistant gloves. Avoid inhalation, contact with eyes, skin or clothing.
- **Conditions for safe storage:** Store in a dry and well-ventilated place in -70 °C. Keep container upright and tightly closed.

## Article 8 - Exposure Controls/Personal Protection

- **Components with limit monitoring values at workplace:**  
Glycerol (CAS-No: 56-81-5)

Values	Control parameters	Regulations
TWA	10 mg/m <sup>3</sup> for mist	British Columbia, Canada
TWA	3 mg/m <sup>3</sup> for respirable mist	British Columbia, Canada
TWA	10 mg/m <sup>3</sup>	Alberta, Canada
TWAEV	10 mg/m <sup>3</sup>	Ontario, Canada
TWAEV	10 mg/m <sup>3</sup>	Quebec, Canada
TWA	10 mg/m <sup>3</sup>	USA

- **Appropriate engineering controls:**  
Apply adequate ventilation including mechanical exhaust or laboratory fume hood. Follow standard laboratory practices.
- **Individual protection measures:**  
**Respiratory protection:**  
Use appropriate respirator if there is inadequate ventilation by following the government standards.  
**Hand protection:**  
Wear gloves and use proper glove removal technique to avoid skin contact. Discard gloves after use by following the applicable laboratory regulations. Wash and dry hands.  
**Eye/face protection:**  
Safety goggles with side-shields approved under appropriate government standards.  
**Skin/body protection:**  
Use appropriate clothing, footwear and any additional protection measures to protect from splashing or contamination.

## Article 9 – Physical and Chemical Properties

<b>Appearance:</b> Colorless fluid.	<b>Danger of explosion:</b> Product does not present an explosion hazard.
<b>Odour/Odour Threshold:</b> Not determined.	<b>Explosion limits:</b> Lower: 0.9 Vol %; Upper: 0.0 Vol %.
<b>pH:</b> Not available.	<b>Decomposition temperature:</b> Not available.
<b>Melting point/freezing point:</b> Not determined.	<b>Vapor pressure at 20 °C:</b> 0.1 hPa
<b>Boiling point/Boiling range:</b> 100 °C.	<b>Density:</b> Not determined.
<b>Flash point:</b> > 100 °C.	<b>Relative density:</b> Not determined.
<b>Flammability (solid, gaseous):</b> Not determined.	<b>Vapor density:</b> Not determined.
<b>Ignition temperature:</b> 400 °C.	<b>Evaporation rate:</b> Not determined.
<b>Auto-igniting:</b> Product is not self-igniting.	<b>Solubility in / Miscibility with Water:</b> Fully miscible.

## Article 10 - Stability and Reactivity

- **Reactivity:** Stable under recommended transport and storage conditions.
- **Chemical stability:** Stable under recommended transport and storage conditions.
- **Possible hazardous reactions:** No dangerous reactions known.
- **Conditions to avoid:** Heat and moisture.
- **Incompatible materials:** Strong acids/bases, strong oxidizing/reducing agents.
- **Hazardous decomposition products:** Carbon oxides may formed under fire conditions; no known decomposition information for other decomposition products.

To place your order, please contact us by phone 1-866-9KINASE (54-6273), 1-(604)-232-4600,  
fax 1-604-232-4601 or by email: [orders@signalchem.com](mailto:orders@signalchem.com) - [www.signalchem.com](http://www.signalchem.com)

**FOR IN VITRO RESEARCH PURPOSES ONLY. NOT INTENDED FOR USE IN HUMAN OR ANIMALS.**

# SAFETY DATA SHEET

---

## Article 11 - Toxicological Information

---

- **Acute toxicity:** Not available.
- **LD/LC50:** Not available.
- **Skin corrosion/irritation:** Not available.
- **Serious eye damage/eye irritation:** Not available.
- **Respiratory or skin sensitization:** Not available.
- **Germ cell mutagenicity:** Not available.
- **Carcinogenicity:** No components are listed in IARC, or NTP, or OSHA, or ACGIH.
- **Reproductive toxicity:** Not available.
- **Teratogenicity:** Not available.
- **Specific target organ toxicity - single exposure/ - repeated exposure (GHS):** Not available.
- **Aspiration hazard:** Not available.
- **Potential health effects:**
  - Inhalation:** May be harmful if inhaled. May cause respiratory tract irritation.
  - Ingestion:** May be harmful if swallowed.
  - Skin:** May be harmful if absorbed through skin. May cause skin irritation.
  - Eyes:** May cause eye irritation.
- **Signs and Symptoms of Exposure:**
  - Prolonged or repeated exposure can cause: Nausea, Dizziness.
- **Synergistic effects:** Not available.

---

## Article 12 - Ecological Information

---

- **Eco-toxicity:** Not applicable.
- **Biodegradability:** Not applicable.
- **Bio-accumulative potential:** Not applicable.
- **Mobility in soil:** Not applicable.
- **PBT and vPvB assessment:** Not applicable.
- **Other adverse effects:** Not applicable.

---

## Article 13 - Disposal Considerations

---

- **Disposal methods:** In accordance to applicable national, regional, or local laws and regulations. For additional handling information and protection of employees please refer to Article 7 and 8.
- **Contaminated packaging:** Disposal should be made in accordance to official regulations. Use water or cleansing agents to clean the area.

---

## Article 14 - Transport Information

---

- **DOT:** Not dangerous goods.
- **IMDG:** Not dangerous goods.
- **IATA:** Not dangerous goods.

---

## Article 15 - Regulatory Information

---

- **WHMIS Classification:** Non-hazardous.
- **GHS label elements:** Not applicable.
- **Signal word:** Not applicable.
- **Hazard statements:** Not applicable.

---

## Article 16 - Other Information

---

The above information is believed to be correct but does not purport to be all-inclusive and shall be used only as a guide. SignalChem shall not be held liable for any damage resulting from handling or from contact with the above product. See the Technical Specification, Packing Slip, Invoice, and Product Catalog for additional terms and conditions of sale.

To place your order, please contact us by phone 1-866-9KINASE (54-6273), 1-(604)-232-4600,  
fax 1-604-232-4601 or by email: [orders@signalchem.com](mailto:orders@signalchem.com) - [www.signalchem.com](http://www.signalchem.com)

**FOR IN VITRO RESEARCH PURPOSES ONLY. NOT INTENDED FOR USE IN HUMAN OR ANIMALS.**