

Anti-AOS1

Rabbit Polyclonal Antibody

Catalog # A80-63R

Lot # R027-8

Cited Applications

- Western blot (1:5000 dilution)

Ideal working dilutions for each application should be empirically determined by the investigator.

Specificity

Recognizes the AOS1 protein

Cross Reactivity

- Western blot AOS1 from human and mouse cells

AOS1 from other species may also be detectable

Host

Rabbit

Immunogen

Synthetic peptide of c-terminal amino acid sequence of human AOS1 (Q9UBE0)

Formulation

TBS, 50% glycerol

Stability

Store at 4°C (add 0.1% NaN₃) for several months, and at -20°C for longer periods. For optimal storage, aliquot antibody into smaller quantities after centrifugation and store at recommended temperature. For optimal performance, avoid repeated handling and multiple freeze/thaw cycles.

Scientific Background

AOS1 encodes a member of the SUMO-activating enzyme for the sumoylation of proteins that regulates protein structure and intracellular localization. AOS1 and UBA2 form a heterodimer that functions as a SUMO-activating enzyme for the sumoylation of proteins. Sumoylation is a 2-step reaction in which the SUA1/UBA2 dimer functions as an E1 enzyme and UBC9 functions as an E2 enzyme (1). AOS1 is required for sumoylation of UBA2 by epitope-tagged sentrin-1, sentrin-2 and sentrin-3 (2).

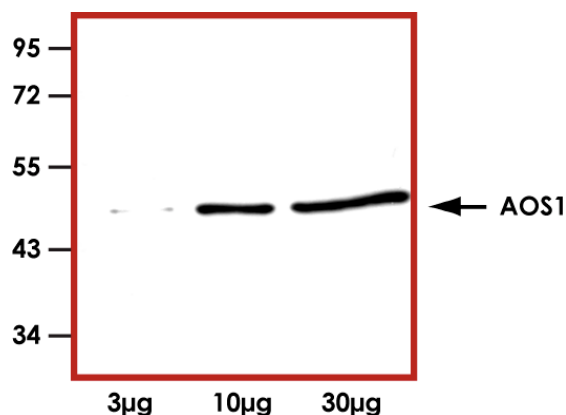
References

- Okuma, et.al: In vitro SUMO-1 modification requires two enzymatic steps, E1 and E2. *Biochem. Biophys. Res. Commun.* 254: 693-698, 1999.
- Gong, L. et.al: Molecular cloning and characterization of human AOS1 and UBA2, components of the sentrin-activating enzyme complex. *FEBS Lett.* 448: 185-189, 1999.

To place your order, please contact us by phone 1-(604)-232-4600, fax 1-604-232-4601 or by email: orders@signalchem.com

www.signalchem.com

Sample Data



Representative western blot with Anti-AOS1 (1:5000) using 3 µg, 10 µg and 30 µg of HeLa cell lysate.

Anti-AOS1

Rabbit Polyclonal Antibody

Catalog Number

A80-63R

Specific Lot Number

R027-8

Purification

Affinity chromatography

Concentration

1.0 µg/µl

Stability

1yr at -20°C from date of shipment

Storage & Shipping

Store product at -20°C. For optimal storage, aliquot antibody into smaller quantities after centrifugation and store at recommended temperature. For optimal performance, avoid repeated handling and multiple freeze/thaw cycles. Product shipped on ice packs.