

Anti-RSK (pan)

Rabbit Polyclonal Antibody

Catalog # R15-63BR

Lot # R039-5

Cited Applications

- Western blot (1:1000)

Ideal working dilutions for each application should be empirically determined by the investigator.

Specificity

Recognizes the RSK1, RSK2, and RSK3 proteins

Cross Reactivity

- Western blot RSK1, RSK2, and RSK3 from human cells

RSK1, RSK2, and RSK3 from other species may also be detectable

Host

Rabbit

Immunogen

Synthetic peptide corresponding to amino acids 346-350 of mouse p90 RSK (protein accession number P18653)

Formulation

PBS pH 7.4, 0.02% sodium azide, 50% glycerol

Stability

Store at 4°C (add 0.1% NaN₃) for several months, and at -20°C for longer periods. For optimal storage, aliquot antibody into smaller quantities after centrifugation and store at recommended temperature. For optimal performance, avoid repeated handling and multiple freeze/thaw cycles.

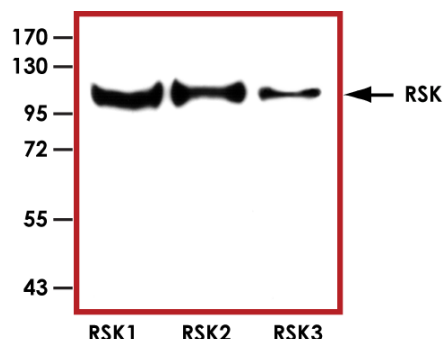
Scientific Background

The RSK or 90-kDa ribosomal S6 kinase family of proteins is a group of highly conserved Ser/Thr kinases that regulate diverse cellular processes during the growth factor-mediated stimulation of cell proliferation, survival and differentiation (1). In mammals, four RSK genes have been identified (RSK1, RSK2, RSK3 and RSK4), and the RSK isoforms are composed of two distinct and functional kinase domains that are activated in a sequential manner by a series of phosphorylation events. RSKs are downstream effectors of the Ras-extracellular signal-regulated kinase (ERK)/mitogen-activated protein kinase (MAPK) signalling cascade.

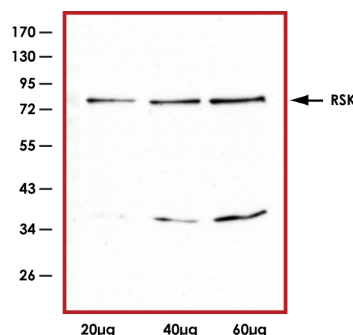
References

1. Anjum R. et al: The RSK family of kinases: emerging roles in cellular signalling. *Nat Rev Mol Cell Biol.* 2008 Oct;9(10):747-58.

Sample Data



Representative western blot with Anti-RSK (pan) (1:1000) using 5 ng of human recombinant RSK1, RSK2, and RSK3.



Representative western blot with Anti-RSK (pan) (1:1000) using 20µg, 40 µg and 60µg of HeLa cell lysate.

Anti-RSK (pan)

Rabbit Polyclonal Antibody

Catalog Number

R15-63BR

Specific Lot Number

R039-5

Purification

Affinity chromatography

Concentration

1.0 µg/µL

Stability

1yr at -20°C from date of shipment

Storage & Shipping

Store product at -20°C. For optimal storage, aliquot antibody into smaller quantities after centrifugation and store at recommended temperature. For optimal performance, avoid repeated handling and multiple freeze/thaw cycles. Product shipped on ice packs.

To place your order, please contact us by phone 1-(604)-232-4600, fax 1-604-232-4601 or by email: orders@signalchem.com
www.signalchem.com

FOR IN VITRO RESEARCH PURPOSES ONLY. NOT INTENDED FOR USE IN HUMAN OR ANIMALS.