

## Anti-DOK1

Rabbit Polyclonal Antibody

**Catalog # D42-63R**

Lot # R039-7

### Cited Applications

- Western blot (1:1000 dilution)

*Ideal working dilutions for each application should be empirically determined by the investigator.*

### Specificity

Recognizes the DOK1 protein

### Cross Reactivity

- Western blot DOK1 from human and mouse cells

*DOK1 from other species may also be detectable*

### Host

Rabbit

### Immunogen

Synthetic peptide corresponding to amino acids 360-364 of human DOK1 (Q99704)

### Formulation

PBS pH 7.4, 0.02% sodium azide, 50% glycerol

### Stability

Store at 4°C (add 0.1% NaN<sub>3</sub>) for several months, and at -20°C for longer periods. For optimal storage, aliquot antibody into smaller quantities after centrifugation and store at recommended temperature. For optimal performance, avoid repeated handling and multiple freeze/thaw cycles.

### Scientific Background

DOK1 contains pleckstrin homology domain and ten PXXP SH3 recognition motifs and is a critical substrate for p210 bcr/abl. DOK1 is constitutively tyrosine phosphorylated in hematopoietic progenitors cells isolated from CML patients (1). DOK1 is associated with p120 Ras-GAP and this association is correlated with its tyrosine phosphorylation. Aberrant phosphorylation of DOK1 may contribute to the progression of different human diseases (2).

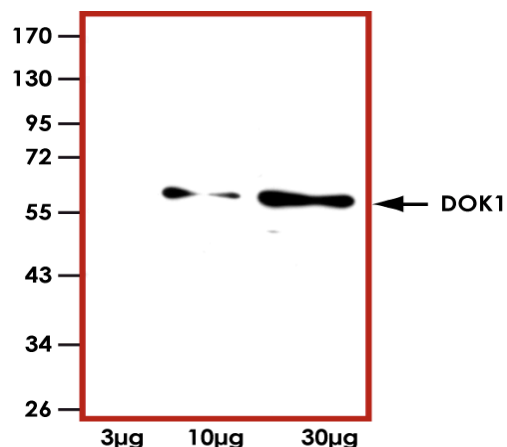
### References

1. Carpino, N. et.al: p62(dok): a constitutively tyrosine-phosphorylated, GAP-associated protein in chronic myelogenous leukemia progenitor cells. *Cell* 88: 197-204, 1997.
2. Yasuda. et.al: Role of Dok-1 and Dok-2 in myeloid homeostasis and suppression of leukemia. *J. Exp. Med.* 200: 1681-1687, 2004.

To place your order, please contact us by phone 1-(604)-232-4600, fax 1-604-232-4601 or by email: [orders@signalchem.com](mailto:orders@signalchem.com)

[www.signalchem.com](http://www.signalchem.com)

### Sample Data



Representative western blot with Anti-DOK1 (1:1000) using 3 µg, 10 µg and 30 µg of 3T6 cell lysate.

## Anti-DOK1

Rabbit Polyclonal Antibody

Catalog Number

D42-63R

Specific Lot Number

R039-7

Purification

Affinity chromatography

Concentration

1.0 µg/µL

Stability

1yr at -20°C from date of shipment

Storage & Shipping

Store product at -20°C. For optimal storage, aliquot antibody into smaller quantities after centrifugation and store at recommended temperature. For optimal performance, avoid repeated handling and multiple freeze/thaw cycles. Product shipped on ice packs.