

## OTUD7B, Active

Human recombinant protein expressed in Sf9 cells

**Catalog # O577-381G**

Lot # R2749-1

### Product Description

Recombinant human OTUD7B (1-482) was expressed by baculovirus in Sf9 insect cells using an N-terminal GST tag. The gene accession number is [NM\\_020205](#).

### Gene Aliases

CEZANNE, ZA20D1, OTU deubiquitinase 7B

### Formulation

Recombinant protein stored in 50mM Tris-HCl, pH 7.5, 150mM NaCl, 10mM glutathione, 0.25mM DTT, 0.1mM EDTA, 0.1mM PMSF, 25% glycerol.

### Storage and Stability

Store product at -70°C. For optimal storage, aliquot target into smaller quantities after centrifugation and store at recommended temperature. For most favorable performance, avoid repeated handling and multiple freeze/thaw cycles.

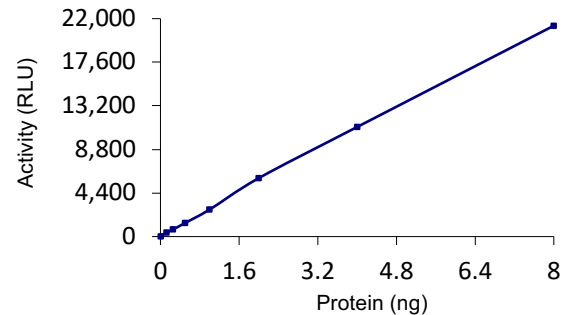
### Scientific Background

OTUD7B is a deubiquitinylase that belongs A20 subgroup of ovarian tumor (OUT) protein superfamily. It plays an essential role in inflammation and proliferation pathways. (1) OTUD7B is involved in regulation of the non-canonical NF-κB pathway. (2) Studies suggest role of OTUD7B in cancer and has been shown to promote lung cancer cell proliferation and migration via Akt/VEGF signal pathway. Therefore, strategies to silence OTUD7B in carcinoma tissues may provide insights into developing therapies against lung adenocarcinoma and squamous carcinoma. (3)

### References

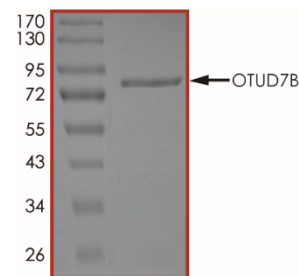
1. Cao L. et al. The N-terminal ubiquitin-associated domain of Cezanne is crucial for its function to suppress NF-κB pathway. *J Cell Biochem.* 119:1979-91 2018.
2. Hongbo H. et al. OTUD7B controls non-canonical NF-κB activation through deubiquitination of TRAF3. *Nature.* 494:371-374, 2013.
3. Dan-dan L. Upregulation of OTUD7B (Cezanne) promotes tumor progression via AKT/VEGF pathway in lung squamous carcinoma and adenocarcinoma. *Frontiers in Oncology.* 9:862, 2019.

### Specific Activity



The specific activity of OTUD7B was determined to be **17 nmol/min/mg** as per activity assay protocol.

### Purity



The purity of OTUD7B was determined to be **>90%** by densitometry, approx. MW **81 kDa**.

## OTUD7B, Active

Human recombinant protein expressed in Sf9 cells

Catalog # O577-381G

Specific Activity 17 nmol/min/mg

Lot # R2749-1

Purity >90%

Concentration 0.1 µg/µl

Stability 1 yr at -70°C from date of shipment

Storage & Shipping Store product at -70°C. For optimal storage, aliquot target into smaller quantities after centrifugation and store at recommended temperature. For most favorable performance, avoid repeated handling and multiple freeze/thaw cycles. Product shipped on dry ice.

To place your order, please contact us by phone 1-866-9KINASE (54-6273), 1-(604)-232-4600, fax 1-604-232-4601 or by email: [orders@signalchem.com](mailto:orders@signalchem.com) - [www.signalchem.com](http://www.signalchem.com)

**FOR IN VITRO RESEARCH PURPOSES ONLY. NOT INTENDED FOR USE IN HUMAN OR ANIMALS.**

# Activity Assay Protocol

## Reaction Components

### Active Enzyme (Catalog #: O577-381G)

Active OTUD7B (0.1 µg/µl) diluted with DUB Reaction Buffer and assayed as outlined in sample activity plot. (Note: these are suggested working dilutions and it is recommended that the researcher perform a serial dilution of Active OTUD7B for optimal results).

### 4X DUB Reaction Buffer (Catalog # D01-09)

Buffer components: 0.2M HEPES (pH7.5), 2mM EDTA, 4mg/ml BSA, add 0.4mM DTT in 4X Buffer prior to use, 0.1mM DTT final assay concentration.

### Luciferin Detection Reagent (Promega, Cat # V8920)

Luciferin Detection Reagent  
Reconstitution Buffer

### DUB Substrate I (Catalog # U06-57)

Recombinant human ubiquitin-based proluciferin substrate with a final concentration of 1mg/ml.

## Assay Procedure

The OTUD7B deubiquitinase activity is detected using a ubiquitin-based proluciferin substrate that is processed through coupled-enzyme reactions to release a light signal. The light intensity is quantitatively correlated with the enzyme activity.

- Step 1.** Thaw the Active OTUD7B, DUB Substrate I and reaction buffer on ice. Thaw reconstituted Luciferin Detection Reagent at room temperature and keep away from light.
- Step 2.** Prepare 1X DUB Reaction Buffer containing 10 mM DTT; prepare enzyme and substrate working stock solutions with the buffer.
- Step 3.** In a half-area solid white 96-well plate, add the following components to bring the reaction volume to 20 µl:
  - Component 1.** 10 µl of 1X DUB Reaction Buffer (replace with test compound solution if performing HTS assay)
  - Component 2.** 5 µl of Active OTUD7B working solution (for HTS assay, pre-incubate for 15 minutes before adding substrate)
  - Component 3.** 5 µl of 2.4 µM substrate working solution

*Note 1: A blank control can be set up as outlined above by replacing the enzyme working solution with an equal volume of reaction buffer.*

*Note 2: A series of aminoluciferin (AML) standard solutions can be included with the enzyme assay in order to determine the specific activity of the enzyme.*

- Step 4.** Briefly centrifuge the plate to ensure reagents are fully mixed and at the bottom of the wells. Incubate the plate at room temperature for 30 minutes.
- Step 5.** Add 20 µl of Luciferin Detection Reagent to all wells, mix by shaking for 2 minutes. Incubate the plate at room temperature for 30 minutes.
- Step 6.** Read the plate using the KinaseGlo luminescence protocol on a GloMax plate reader (Promega, Cat# E7031)
- Step 7.** Using an AML standard curve to determine the concentration of AML produced (µM) and calculate the enzyme specific activity as outlined below.

### Enzyme Specific Activity (SA) (nmol/min/mg)

$$= \frac{[AML](\mu M) \times \text{Reaction Volume}(\mu l)}{\text{Reaction Time (min)} \times \text{Enzyme Amount (mg)}} \times 10^{-3}$$

To place your order, please contact us by phone 1-866-9KINASE (54-6273), 1-(604)-232-4600, fax 1-604-232-4601 or by email: [orders@signalchem.com](mailto:orders@signalchem.com) - [www.signalchem.com](http://www.signalchem.com)

**FOR IN VITRO RESEARCH PURPOSES ONLY. NOT INTENDED FOR USE IN HUMAN OR ANIMALS.**

# SAFETY DATA SHEET

## Article 1 – Product Identification

**Product Name: OTUD7B, Active**

**Catalog # O577-381G**

*This product is sold only for research use by qualified laboratory personnel, and is not to be used as a drug, medical device, food additive, cosmetic, nor household chemical. It is not to be used in diagnostic, therapeutic, consumer, agricultural, nor pesticidal applications.*

Manufacturer's Name: SignalChem Biotech Inc.  
 Street Address: 110-13120 Vanier Place  
 City, Prov. Postal Code: Richmond, BC, V6V 2J2  
 Fax: 604-232-4601  
 EMERGENCY PHONE: 604-232-4600

## Article 2 - Hazard Identification

- **WHMIS Classification:** Not WHMIS controlled.
- **GHS classification:** Skin irritation (Category 3); Eye irritation (Category 2B).
- **Hazard Pictograms:** none.
- **Signal words:** Warning.
- **Hazard statements:** Causes mild skin irritation (H316); Causes eye irritation (H320).
- **Precautionary statements:** IF IN EYES: Rinse cautiously with water for several minutes. Remove contact lenses, if present and easy to do. Continue rinsing. (P305 + P351 + P338).
- **Other hazards:** none known.

## Article 3 – Composition/Information on Ingredients

**Chemical Characterization:** Mixtures.

**Description:** This product consists of the substances listed below.

| Common name   | Chemical name   | CAS-No.           | Concentration |
|---|---|-------------------|---------------|
| Glycerol  | Glycerol  | 56-81-5           | ≤25%          |
| NaCl  | Sodium chloride   | 7647-14-5         | ≤1.753 %      |
| Tris-HCl; Tris (hydroxymethyl) aminomethane hydrochloride | 2 - Amino - 2 - (hydroxymethyl) propane - 1, 3 - diol hydrochloride | 1185-53-1         | <0.8%         |
| Glutathione   | Glutathione   | 70-18-8           | 0.307%        |
| Protein   |   | No data available | ≤0.02%        |
| DTT; Dithiothreitol                                       | {R*,R*}-1,4-Dimercaptobutane-2,3-diol                               | 3483-12-3         | 0.0038%       |
| EDTA  | Ethylenediaminetetraacetic acid                                     | 6381-92-6         | 0.0037%       |
| PMSF; Phenylmethanesulfonyl fluoride                      | α-Toluenesulphonyl fluoride   | 329-98-6          | 0.002%        |

## Article 4 – First-aid Measures

- **General information:** Consult a physician by providing the SDS.
- **After inhalation:** Breathe in fresh air. If cannot breathe, give artificial respiration and consult a physician.
- **After skin contact:** Immediately wash with soap and plenty of water and rinse thoroughly. Consult a physician.
- **After eye contact:** Rinse opened eyes with plenty of water for at least 15 minutes. Consult a physician.
- **After swallowing:** rinse the mouth with plenty of water and consult a physician.

## Article 5 - Fire-fighting Measures

- **Suitable extinguishing media:** Use water spray, extinguishing powder, carbon dioxide, or other appropriate measure that is suitable to the environment.
- **Specific hazards arising from the substance or mixture:** None known.
- **Special protective equipment and precautions for fire-fighters:** Self-contained breathing apparatus if necessary.

To place your order, please contact us by phone 1-866-9KINASE (54-6273), 1-(604)-232-4600, fax 1-604-232-4601 or by email: [orders@signalchem.com](mailto:orders@signalchem.com) - [www.signalchem.com](http://www.signalchem.com)

**FOR IN VITRO RESEARCH PURPOSES ONLY. NOT INTENDED FOR USE IN HUMAN OR ANIMALS.**

# SAFETY DATA SHEET

## Article 6 – Accidental Release Measures

- **Personal precautions, protective equipment and emergency procedures:** Apply standard laboratory practices and personal protective equipment. Avoid breathing vapors, mist, or gas. Ensure adequate ventilation.
- **Environmental precautions:** Do not allow to enter drains.
- **Methods and materials for containment and cleaning up:** Absorb on sand or vermiculite and place in closed containers for disposal.

## Article 7 - Handling and Storage

- **Precautions for safe handling:** Wear chemical safety goggles and compatible chemical-resistant gloves. Avoid inhalation, contact with eyes, skin or clothing.
- **Conditions for safe storage:** Store in a dry and well-ventilated place in -70 °C. Keep container upright and tightly closed.

## Article 8 - Exposure Controls/Personal Protection

- **Components with limit monitoring values at workplace:**  
Glycerol (CAS-No: 56-81-5)

| Values | Control parameters                      | Regulations              |
|--------|---|--------------------------|
| TWA    | 10 mg/m <sup>3</sup> for mist           | British Columbia, Canada |
| TWA    | 3 mg/m <sup>3</sup> for respirable mist | British Columbia, Canada |
| TWA    | 10 mg/m <sup>3</sup>                    | Alberta, Canada          |
| TWAEV  | 10 mg/m <sup>3</sup>                    | Ontario, Canada          |
| TWAEV  | 10 mg/m <sup>3</sup>                    | Quebec, Canada           |
| TWA    | 10 mg/m <sup>3</sup>                    | USA                      |

- **Appropriate engineering controls:**  
Apply adequate ventilation including mechanical exhaust or laboratory fume hood. Follow standard laboratory practices.
- **Individual protection measures:**  
**Respiratory protection:**  
Use appropriate respirator if there is inadequate ventilation by following the government standards.  
**Hand protection:**  
Wear gloves and use proper glove removal technique to avoid skin contact. Discard gloves after use by following the applicable laboratory regulations. Wash and dry hands.  
**Eye/face protection:**  
Safety goggles with side-shields approved under appropriate government standards.  
**Skin/body protection:**  
Use appropriate clothing, footwear and any additional protection measures to protect from splashing or contamination.

## Article 9 – Physical and Chemical Properties

|   |   |
|---|---|
| <b>Appearance:</b> Colorless fluid.                   | <b>Danger of explosion:</b> Product does not present an explosion hazard. |
| <b>Odour/Odour Threshold:</b> Not determined.         | <b>Explosion limits:</b> Lower: 0.9 Vol %; Upper: 0.0 Vol %.              |
| <b>pH:</b> Not available.                             | <b>Decomposition temperature:</b> Not available.                          |
| <b>Melting point/freezing point:</b> Not determined.  | <b>Vapor pressure at 20 °C:</b> 0.1 hPa                                   |
| <b>Boiling point/Boiling range:</b> 100 °C.           | <b>Density:</b> Not determined.   |
| <b>Flash point:</b> > 100 °C.                         | <b>Relative density:</b> Not determined.                                  |
| <b>Flammability (solid, gaseous):</b> Not determined. | <b>Vapor density:</b> Not determined.                                     |
| <b>Ignition temperature:</b> 400 °C.                  | <b>Evaporation rate:</b> Not determined.                                  |
| <b>Auto-igniting:</b> Product is not self-igniting.   | <b>Solubility in / Miscibility with Water:</b> Fully miscible.            |

## Article 10 - Stability and Reactivity

- **Reactivity:** Stable under recommended transport and storage conditions.
- **Chemical stability:** Stable under recommended transport and storage conditions.
- **Possible hazardous reactions:** No dangerous reactions known.
- **Conditions to avoid:** Heat and moisture.
- **Incompatible materials:** Strong acids/bases, strong oxidizing/reducing agents.
- **Hazardous decomposition products:** Carbon oxides may formed under fire conditions; no known decomposition information for other decomposition products.

To place your order, please contact us by phone 1-866-9KINASE (54-6273), 1-(604)-232-4600, fax 1-604-232-4601 or by email: [orders@signalchem.com](mailto:orders@signalchem.com) - [www.signalchem.com](http://www.signalchem.com)

**FOR IN VITRO RESEARCH PURPOSES ONLY. NOT INTENDED FOR USE IN HUMAN OR ANIMALS.**

# SAFETY DATA SHEET

---

## Article 11 - Toxicological Information

---

- **Acute toxicity:** Not available.
- **LD/LC50:** Not available.
- **Skin corrosion/irritation:** Not available.
- **Serious eye damage/eye irritation:** Not available.
- **Respiratory or skin sensitization:** Not available.
- **Germ cell mutagenicity:** Not available.
- **Carcinogenicity:** No components are listed in IARC, or NTP, or OSHA, or ACGIH.
- **Reproductive toxicity:** Not available.
- **Teratogenicity:** Not available.
- **Specific target organ toxicity - single exposure/ - repeated exposure (GHS):** Not available.
- **Aspiration hazard:** Not available.
- **Potential health effects:**
  - Inhalation:** May be harmful if inhaled. May cause respiratory tract irritation.
  - Ingestion:** May be harmful if swallowed.
  - Skin:** May be harmful if absorbed through skin. May cause skin irritation.
  - Eyes:** May cause eye irritation.
- **Signs and Symptoms of Exposure:**
  - Prolonged or repeated exposure can cause: Nausea, Dizziness.
- **Synergistic effects:** Not available.

---

## Article 12 - Ecological Information

---

- **Eco-toxicity:** Not applicable.
- **Biodegradability:** Not applicable.
- **Bio-accumulative potential:** Not applicable.
- **Mobility in soil:** Not applicable.
- **PBT and vPvB assessment:** Not applicable.
- **Other adverse effects:** Not applicable.

---

## Article 13 - Disposal Considerations

---

- **Disposal methods:** In accordance to applicable national, regional, or local laws and regulations. For additional handling information and protection of employees please refer to Article 7 and 8.
- **Contaminated packaging:** Disposal should be made in accordance to official regulations. Use water or cleansing agents to clean the area.

---

## Article 14 - Transport Information

---

- **DOT:** Not dangerous goods.
- **IMDG:** Not dangerous goods.
- **IATA:** Not dangerous goods.

---

## Article 15 - Regulatory Information

---

- **WHMIS Classification:** Non-hazardous.
- **GHS label elements:** Not applicable.
- **Signal word:** Not applicable.
- **Hazard statements:** Not applicable.

---

## Article 16 - Other Information

---

The above information is believed to be correct but does not purport to be all-inclusive and shall be used only as a guide. SignalChem shall not be held liable for any damage resulting from handling or from contact with the above product. See the Technical Specification, Packing Slip, Invoice, and Product Catalog for additional terms and conditions of sale.

To place your order, please contact us by phone 1-866-9KINASE (54-6273), 1-(604)-232-4600,  
fax 1-604-232-4601 or by email: [orders@signalchem.com](mailto:orders@signalchem.com) - [www.signalchem.com](http://www.signalchem.com)

**FOR IN VITRO RESEARCH PURPOSES ONLY. NOT INTENDED FOR USE IN HUMAN OR ANIMALS.**