

STK16 Protein

Full length recombinant protein expressed in Sf9 cells

Catalog # S31-34G

Lot # S105-2

Product Description

Recombinant full-length human STK16 was expressed by baculovirus in Sf9 insect cells using an N-terminal GST tag. The gene accession number is [NM_003691](#).

Gene Aliases

KRCT, MPSK, TSF1, PKL12, FLJ39635

Formulation

Recombinant protein stored in 50mM Tris-HCl, pH 7.5, 50mM NaCl, 10mM glutathione, 0.1mM EDTA, 0.25mM DTT, 0.1mM PMSF, 25% glycerol.

Storage and Stability

Store product at -70°C. For optimal storage, aliquot target into smaller quantities after centrifugation and store at recommended temperature. For most favorable performance, avoid repeated handling and multiple freeze/thaw cycles.

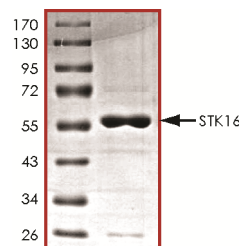
Scientific Background

STK16 is serine/threonine kinase 16 which constitute the catalytic subunit of a multisubunit kinase. STK16 is ubiquitously expressed at very low levels and expression of an STK16 fusion protein showed that STK16 is localized with Golgi and Golgi-derived vesicles. The overexpression of STK16 leads to disorganization of the Golgi apparatus into vesicular structures and STK16 is highly involved in the secretory pathway (1). STK16 is involved in the transforming growth factor (TGF)-beta signalling pathway (2).

References

1. Ligos, J. M. et.al: Cloning, expression analysis, and functional characterization of PKL12, a member of a new subfamily of ser/thr kinases. Biochem. Biophys. Res. Commun. 249: 380-384, 1998.
2. Ohta, S. et.al: A novel transcriptional factor with Ser/Thr kinase activity involved in the transforming growth factor (TGF)-beta signalling pathway. Biochem. J. 350: 395-404, 2000.

Purity



The purity of STK16 was determined to be **>95%** by densitometry. Approx. MW **58 kDa**.

STK16 Protein

Full length recombinant protein expressed in Sf9 cells

Catalog Number	S31-34G
Specific Lot Number	S105-2
Purity	>95%
Concentration	0.1 µg/µl
Stability	1yr At -70°C from date of shipment
Storage & Shipping	Store product at -70°C. For optimal storage, aliquot target into smaller quantities after centrifugation and store at recommended temperature. For most favorable performance, avoid repeated handling and multiple freeze/thaw cycles. Product shipped on dry ice.

To place your order, please contact us by phone 1-(604)-232-4600, fax 1-604-232-4601 or by email: orders@signalchem.com
www.signalchem.com

FOR IN VITRO RESEARCH PURPOSES ONLY. NOT INTENDED FOR USE IN HUMAN OR ANIMALS.