

## NIK, Active

Recombinant human protein expressed in Sf9 cells

**Catalog # M22-11G**

Lot # S250-1

### Product Description

Recombinant human NIK (325-end) was expressed by baculovirus in Sf9 insect cells using an N-terminal GST tag. The NIK gene accession number is [NM\\_003954](#).

### Gene Aliases

MAP3K14, HS, HSNIK, FTDCR1B

### Formulation

Recombinant protein stored in 50mM Tris-HCl, pH 7.5, 150mM NaCl, 10mM glutathione, 0.1mM EDTA, 0.25mM DTT, 0.1mM PMSF, 25% glycerol.

### Storage and Stability

Store product at -70°C. For optimal storage, aliquot target into smaller quantities after centrifugation and store at recommended temperature. For most favorable performance, avoid repeated handling and multiple freeze/thaw cycles.

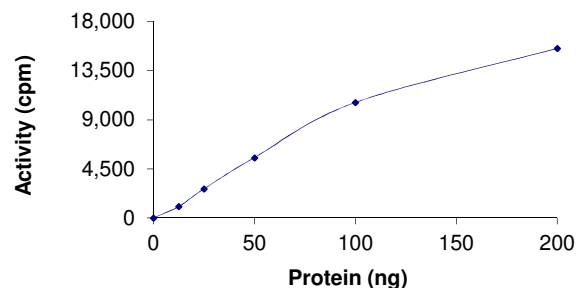
### Scientific Background

NIK is a mitogen-activated protein kinase kinase kinase 14 (MAP3K14), which binds to TRAF2 and stimulates NF-kappaB activity. NIK shares sequence similarity with several other MAPKK kinases and participates in NF-kappaB-inducing signalling cascade common to receptors of the tumour-necrosis/nerve-growth factor (TNF/NGF) family and to the interleukin-1 type-I receptor. (1) NIK is expressed in primary human cells and in inflamed rheumatoid arthritis tissue and plays a selective role in signaling by the lymphotoxin-beta receptor (2). NIK is a therapeutic target in the immune and bone-destructive components of inflammatory arthritis.

### References

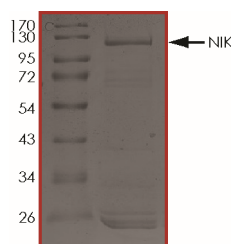
1. Smith, C. et.al: NF-kappa-B-inducing kinase is dispensable for activation of NF-kappa-B in inflammatory settings but essential for lymphotoxin beta receptor activation of NF-kappa-B in primary human fibroblasts. J. Immun. 167: 5895-5903, 2001.
2. Yin, L. et.al: Defective lymphotoxin-beta receptor-induced NF-kappa-B transcriptional activity in NIK-deficient mice. Science 291: 2162-2165, 2001.

### Specific Activity



The specific activity of NIK was determined to be **8.2 nmol /min/mg** as per activity assay protocol.

### Purity



The purity of NIK was determined to be **>80%** by densitometry, approx. MW **~108kDa**.

## NIK, Active

Recombinant human protein expressed in Sf9 cells

Catalog #	M22-11G
Specific Activity	8.2 nmol/min/mg
Lot #	S250-1
Purity	>80%
Concentration	0.1 µg/µl
Stability	1yr at -70°C from date of shipment
Storage & Shipping	Store product at -70°C. For optimal storage, aliquot target into smaller quantities after centrifugation and store at recommended temperature. For most favorable performance, avoid repeated handling and multiple freeze/thaw cycles. Product shipped on dry ice.

To place your order, please contact us by phone 1-(604)-232-4600, fax 1-604-232-4601 or by email: [orders@signalchem.com](mailto:orders@signalchem.com)  
[www.signalchem.com](http://www.signalchem.com)

**FOR IN VITRO RESEARCH PURPOSES ONLY. NOT INTENDED FOR USE IN HUMAN OR ANIMALS.**

# Activity Assay Protocol

## Reaction Components

### Active Kinase (Catalog #: M22-11G)

Active NIK (0.1µg/µl) diluted with Kinase Dilution Buffer III (Catalog #: K23-09) and assayed as outlined in sample activity plot. (Note: these are suggested working dilutions and it is recommended that the researcher perform a serial dilution of Active NIK for optimal results).

### Kinase Dilution Buffer III (Catalog #: K23-09)

Kinase Assay Buffer I (Catalog #: K01-09) diluted at a 1:4 ratio (5X dilution) with 50ng/µl BSA solution.

### Kinase Assay Buffer I (Catalog #: K01-09)

Buffer components: 25mM MOPS, pH 7.2, 12.5mM β-glycerol-phosphate, 25mM MgCl<sub>2</sub>, 5mM EGTA, 2mM EDTA. Add 0.25mM DTT to Kinase Assay Buffer prior to use.

### [<sup>33</sup>P]-ATP Assay Cocktail

Prepare 250µM [<sup>33</sup>P]-ATP Assay Cocktail in a designated radioactive working area by adding the following components: 150µl of 10mM ATP Stock Solution (Catalog #: A50-09), 100µl [<sup>33</sup>P]-ATP (1mCi/100µl), 5.75ml of Kinase Assay Buffer I (Catalog #: K01-09). Store 1ml aliquots at -20°C.

### 10mM ATP Stock Solution (Catalog #: A50-09)

Prepare ATP stock solution by dissolving 55mg of ATP in 10ml of Kinase Assay Buffer I (Catalog #: K01-09). Store 200µl aliquots at -20°C.

### Substrate (Catalog #: M42-51N)

Myelin Basic Protein (MBP) substrate diluted in distilled H<sub>2</sub>O to a final concentration of 1mg/ml.

## Assay Protocol

- Step 1.** Thaw [<sup>33</sup>P]-ATP Assay Cocktail in shielded container in a designated radioactive working area.
- Step 2.** Thaw the Active NIK, Kinase Assay Buffer, Substrate and Kinase Dilution Buffer on ice.
- Step 3.** In a pre-cooled microfuge tube, add the following reaction components bringing the initial reaction volume up to 20µl:
- Component 1.** 10µl of diluted Active NIK (Catalog #M22-11G)
  - Component 2.** 5µl of 1mg/ml stock solution of substrate (Catalog #M42-51N)
  - Component 3.** 5µl distilled H<sub>2</sub>O (4°C)
- Step 4.** Set up the blank control as outlined in step 3, excluding the addition of the substrate. Replace the substrate with an equal volume of distilled H<sub>2</sub>O.
- Step 5.** Initiate the reaction by the addition of 5 µl [<sup>33</sup>P]-ATP Assay Cocktail bringing the final volume up to 25µl and incubate the mixture in a water bath at 30°C for 15 minutes.
- Step 6.** After the 15 minute incubation period, terminate the reaction by spotting 20 µl of the reaction mixture onto individual pre-cut strips of phosphocellulose P81 paper.
- Step 7.** Air dry the pre-cut P81 strip and sequentially wash in a 1% phosphoric acid solution (dilute 10ml of phosphoric acid and make a 1L solution with distilled H<sub>2</sub>O) with constant gentle stirring. It is recommended that the strips be washed a total of 3 intervals for approximately 10 minutes each.
- Step 8.** Count the radioactivity on the P81 paper in the presence of scintillation fluid in a scintillation counter.
- Step 9.** Determine the corrected cpm by removing the blank control value (see Step 4) for each sample and calculate the kinase specific activity as outlined below.

### Calculation of [<sup>33</sup>P]-ATP Specific Activity (SA) (cpm/pmol)

Specific activity (SA) = cpm for 5 µl [<sup>33</sup>P]-ATP / pmoles of ATP (in 5 µl of a 250 µM ATP stock solution, i.e., 1250 pmoles)

### Kinase Specific Activity (SA) (pmol/min/µg or nmol/min/mg)

Corrected cpm from reaction / [(SA of <sup>33</sup>P-ATP in cpm/pmol)\*(Reaction time in min)\*(Enzyme amount in µg or mg)]\*[(Reaction Volume) / (Spot Volume)]

To place your order, please contact us by phone 1-(604)-232-4600, fax 1-604-232-4601 or by email: [orders@signalchem.com](mailto:orders@signalchem.com)  
[www.signalchem.com](http://www.signalchem.com)

**FOR IN VITRO RESEARCH PURPOSES ONLY. NOT INTENDED FOR USE IN HUMAN OR ANIMALS.**