

SETDB2 Protein

Recombinant full-length human protein expressed in Sf9 cells

Catalog # S346-30BG

Lot # T906-2

Product Description

Recombinant full-length human SETDB2 was expressed by baculovirus in Sf9 insect cells using an N-terminal GST tag. The SETDB2 gene accession number is [BC047434](#).

Gene Aliases

CLLD8, CLLL8

Formulation

Recombinant protein stored in 50mM Tris-HCl, pH 7.5, 150mM NaCl, 10mM glutathione, 0.1mM EDTA, 0.25mM DTT, 0.1mM PMSF, 25% glycerol.

Storage and Stability

Store product at -70°C . For optimal storage, aliquot target into smaller quantities after centrifugation and store at recommended temperature. For most favorable performance, avoid repeated handling and multiple freeze/thaw cycles.

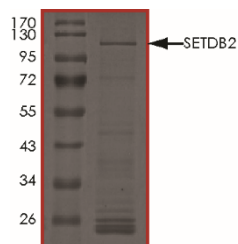
Scientific Background

SETDB2 is a histone H3 methyltransferase that modulates gene expression epigenetically through histone H3 methylation. Methylation of histone H3 at lysine 9 (H3K9) by SETDB2 has emerged as an important player in the formation of heterochromatin, chromatin condensation, and transcriptional repression. SETDB2 is recruited to heterochromatin regions and contributes in vivo to the deposition of trimethyl marks. Depletion of SETDB2 coincides with a loss of CENP proteins and delayed mitosis, suggesting that SETDB2 participates in chromosome condensation and segregation (1). Using positional cloning approach, SETDB2 has been cloned from a quantitative trait locus on chromosome 13q14 that influences immunoglobulin E levels and asthma (2).

References

1. Falandry C. et al: CLLD8/KMT1F is a lysine methyltransferase that is important for chromosome segregation. J Biol Chem. 2010 Jun 25;285(26):20234-41.
2. Zhang, Y. et al: Positional cloning of a quantitative trait locus on chromosome 13q14 that influences immunoglobulin E levels and asthma. Nature Genet. 34: 181-186, 2003.

Purity



The purity of SETDB2 was determined to be **>70%** by densitometry, approx. MW **120 kDa**.

SETDB2 Protein

Recombinant full-length human protein expressed in Sf9 cells

Catalog #	S346-30BG
Lot #	T906-2
Purity	>70%
Concentration	0.1 µg/µl
Stability	1yr at -70°C from date of shipment
Storage & Shipping	Store product at -70°C . For optimal storage, aliquot target into smaller quantities after centrifugation and store at recommended temperature. For most favorable performance, avoid repeated handling and multiple freeze/thaw cycles. Product shipped on dry ice.

To place your order, please contact us by phone 1-(604)-232-4600, fax 1-604-232-4601 or by email: orders@signalchem.com
www.signalchem.com

FOR IN VITRO RESEARCH PURPOSES ONLY. NOT INTENDED FOR USE IN HUMAN OR ANIMALS.