

MEK1 (EE), Active

Full-length recombinant protein expressed in E. coli cells

Catalog # M02-12G

Lot # V040-1

Product Description

Recombinant full-length mouse MEK1 (S218E, S222E) was expressed in E. coli cells using a N-terminal GST tag. The gene accession number is [NM_008927](#).

Gene Aliases

MAP2K1; MKK1; MAPKK1; PRKMK1

Formulation

Recombinant protein stored in 50mM Tris-HCl, pH 7.5, 150mM NaCl, 0.25mM DTT, 0.1mM EGTA, 0.1mM EDTA, 0.1mM PMSF, 25% glycerol.

Storage and Stability

Store product at -70°C. For optimal storage, aliquot target into smaller quantities after centrifugation and store at recommended temperature. For most favorable performance, avoid repeated handling and multiple freeze/thaw cycles.

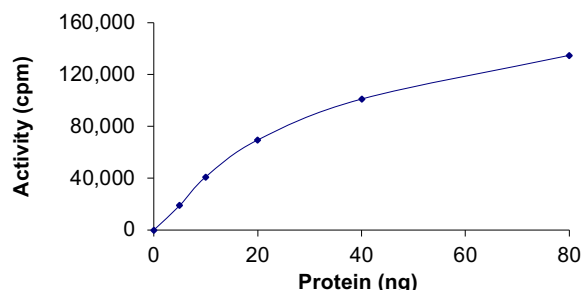
Scientific Background

MEK1 is a member of the dual specificity protein kinase family that acts as a mitogen-activated protein kinase (MAPK) kinase. MEK1 lies upstream of MAPK/ERK and stimulates the enzymatic activity of MAPK/ERK upon a wide variety of extra- and intracellular signals. As an essential component of MAPK/ERK signal transduction pathway, MEK1 is involved in many cellular processes such as proliferation, differentiation, transcription regulation and development (1). Constitutive activation of MEK1 results in cellular transformation. Thus, MEK1 represents a likely target for pharmacologic intervention in proliferative disease such as cancer (2).

References

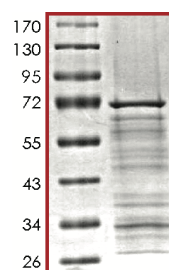
1. Seger, R. et al: The MAPK signaling cascade. FASEB J. 9: 726-735, 1995.
2. Sebolt-Leopold, J S. et al: Blockade of the MAP kinase pathway suppresses growth of colon tumors in vivo. Nature Med. 5: 810-816, 1999.

Specific Activity



The specific activity of MEK1 was determined to be **278 nmol /min/mg** as per activity assay protocol.

Purity



The purity of MEK1 was determined to be **>70%** by densitometry, approx. MW **~69kDa**.

MEK1 (EE), Active

Full-length recombinant protein expressed in E. coli cells

Catalog Number	M02-12G
Specific Activity	278 nmol/min/mg
Lot Specific Number	V040-1
Purity	>70%
Concentration	0.1 µg/ml
Stability	1yr At -70°C from date of shipment
Storage & Shipping	Store product at -70°C. For optimal storage, aliquot target into smaller quantities after centrifugation and store at recommended temperature. For most favorable performance, avoid repeated handling and multiple freeze/thaw cycles. Product shipped on dry ice.

Activity Assay Protocol

Reaction Components

Active Kinase (Catalog #: M02-12G)

Active MEK1 (0.1µg/µl) diluted with Kinase Dilution Buffer (Catalog #: K23-09) and assayed as outlined in sample activity plot. (Note: these are suggested working dilutions and it is recommended that the researcher perform a serial dilution of Active MEK1 for optimal results).

Kinase Dilution Buffer (Catalog #: K23-09)

Kinase Assay Buffer I (Catalog #: K01-09) diluted at a 1:4 ratio (5X dilution) with 50ng/µl BSA solution.

Kinase Assay Buffer (Catalog #: K01-09)

Buffer components: 25mM MOPS, pH 7.2, 12.5mM β-glycerol-phosphate, 25mM MgCl₂, 5mM EGTA, 2mM EDTA. Add 0.25mM DTT to Kinase Assay Buffer prior to use.

[³²P]-ATP Assay Cocktail

Prepare 250µM [³²P]-ATP Assay Cocktail in a designated radioactive working area by adding the following components: 150µl of 10mM ATP Stock Solution (Catalog #: A50-09), 100µl [³²P]-ATP (1mCi/100µl), 5.75ml of Kinase Assay Buffer (Catalog #: K01-09). Store 1ml aliquots at -20°C.

10mM ATP Stock Solution (Catalog #: A50-09)

Prepare ATP stock solution by dissolving 55mg of ATP in 10ml of Kinase Assay Buffer (Catalog #: K01-09). Store 200µl aliquots at -20°C.

Substrate

Unactive ERK1 (Catalog #: M29-14G) was activated using MEK1 and then Myelin Basic Protein (MBP) (Catalog #: M42-51N) diluted in distilled H₂O to a final concentration of 1mg/ml was used as a substrate.

Assay Protocol

Step 1. Thaw the Active MEK1, Kinase Assay Buffer and Unactive ERK1 on ice. In a pre-cooled microfuge tube, add the following reaction components bringing the initial reaction volume up to 20µl:

Component 1. 10µl of diluted Active MEK1 (Catalog # M02-12G)

Component 2. 5µl of Unactive ERK1 (0.2µg/µl) (Catalog #: # M29-14G)

Component 3. 5µl of Kinase Assay Buffer (Catalog #: # K01-09)

Step 2. Start the reaction by the addition of 5 µl ATP (250µM) and incubate in a water bath at 30°C for 15 minutes.

Step 3. After the 15 minute incubation period, remove 5µl and add to the following reaction components bringing the initial reaction volume up to 20µl:

Component 1. 5µl of reaction mixture

Component 2. 5µl of MBP substrate (Catalog #: M42-51N)

Component 3. 10µl distilled H₂O (4°C)

Step 4. Set up the blank control as outlined in step 3, excluding the addition of the substrate. Replace the substrate with an equal volume of distilled H₂O.

Step 5. Thaw [³²P]-ATP Assay Cocktail in shielded container in a designated radioactive working area. Initiate the reaction by the addition of 5 µl [³²P]-ATP Assay Cocktail bringing the final volume up to 25µl and incubate the mixture in a water bath at 30°C for 15 minutes.

Step 6. After the 15 minute incubation period, terminate the reaction by spotting 20 µl of the reaction mixture onto individual pre-cut strips of phosphocellulose P81 paper.

Step 7. Air dry the pre-cut P81 strip and sequentially wash in a 1% phosphoric acid solution (dilute 10ml of phosphoric acid and make a 1L solution with distilled H₂O) with constant gentle stirring. It is recommended that the strips be washed a total of 3 intervals for approximately 10 minutes each.

Step 8. Count the radioactivity on the P81 paper in the presence of scintillation fluid in a scintillation counter.

Step 9. Determine the corrected cpm by removing the blank control value (see Step 4) for each sample and calculate the kinase specific activity as outlined below.

Calculation of [³²P]-ATP Specific Activity (SA) (cpm/pmol)

Specific activity (SA) = cpm for 5 µl [³²P]-ATP / pmoles of ATP (in 5 µl of a 250 µM ATP stock solution, i.e., 1250 pmoles)

Kinase Specific Activity (SA) (pmol/min/µg or nmol/min/mg)

Corrected cpm from reaction / [(SA of ³²P-ATP in cpm/pmol)*(Reaction time in min)*(Enzyme amount in µg or mg)]*[(Reaction Volume) / (Spot Volume)]

To place your order, please contact us by phone 1-(604)-232-4600, fax 1-604-232-4601 or by email: orders@signalchem.com
www.signalchem.com

FOR IN VITRO RESEARCH PURPOSES ONLY. NOT INTENDED FOR USE IN HUMAN OR ANIMALS.

MATERIAL SAFETY DATA SHEET

Article 1 - Product Identification and Use

Product Name: MEK1 (EE), Active

Catalog # M02-12G

This product is sold only for research use by qualified laboratory personnel, and is not to be used as a drug, medical device, food additive, cosmetic, nor household chemical. It is not to be used in diagnostic, therapeutic, consumer, agricultural, nor pesticidal applications.

Manufacturer's Name: SignalChem Pharmaceuticals Inc.
Street Address: 550-5600 Parkwood Way
City, Prov. Postal Code: Richmond, BC, V6V 2M2
Fax: 604-232-4601
EMERGENCY PHONE: 604-232-4600

Article 2 - Hazardous Ingredients

NOT AVAILABLE. We are not aware of any hazards associated with this product or its ingredients, but the chemical, physical, and toxicological properties of this product have not been investigated thoroughly. Observe normal laboratory precautions.

Article 3 - Physical Data

This product consists of purified protein in Tris-HCl buffer shipped on dry ice. The physical properties of this product have not been investigated thoroughly.

Article 4 - Fire and Explosion Hazard

NOT APPLICABLE

Article 5 - Reactivity Data

NOT APPLICABLE

Article 6 - Toxicologically Data

May be harmful by inhalation, ingestion, or skin absorption. The toxicological properties of this product have not been investigated thoroughly. Exercise due caution.

Article 7 - Preventative Measures

Wear chemical safety goggles and compatible chemical-resistant gloves. Avoid inhalation, contact with eyes, skin or clothing.

*****MULTIPLE COMPONENT SPILL OR LEAK PROCEDURES*****

- Wear protective equipment.
- Absorb on sand or vermiculite and place in closed containers for disposal.
- Observe all federal, state and local environmental regulations.

Article 8 - First Aid Measures

- If swallowed, wash out mouth with water, provided person is conscious. Call a physician.
- In case of skin contact, flush with copious amounts of water for at least 15 minutes. Remove contaminated clothing and shoes. If a rash or other irritation develops, call a physician.
- If inhaled, remove to fresh air. If breathing becomes difficult, call a physician.
- In case of eye contact, flush with copious amounts of water for at least 15 minutes while separating the eyelids with fingers. Call a physician.

Article 9 - Preparation

Prepared by: Jun Yan

Phone#: 1-866-954-6273

The above information is believed to be correct but does not purport to be all-inclusive and shall be used only as a guide. SignalChem shall not be held liable for any damage resulting from handling or from contact with the above product. See the Technical Specification, Packing Slip, Invoice, and Product Catalogue for additional terms and conditions of sale.

To place your order, please contact us by phone 1-(604)-232-4600, fax 1-604-232-4601 or by email: orders@signalchem.com
www.signalchem.com

FOR IN VITRO RESEARCH PURPOSES ONLY. NOT INTENDED FOR USE IN HUMAN OR ANIMALS.