

SOD1 Protein

Full-length recombinant protein expressed in E. coli cells

Catalog # S26-30G

Lot # V227-1

Product Description

Recombinant full-length human SOD1 was expressed in E. coli cells using an N-terminal GST tag. The gene accession number is [NM_000454](#).

Gene Aliases

Cu/Zn-SOD, ALS, SOD, ALS1, IPOA, Homodimer

Formulation

Recombinant protein stored in 50mM Tris-HCl, pH 7.5, 150mM NaCl, 10mM glutathione, 0.1mM EDTA, 0.25mM DTT, 0.1mM PMSF, 25% glycerol.

Storage and Stability

Store product at -70°C. For optimal storage, aliquot target into smaller quantities after centrifugation and store at recommended temperature. For most favorable performance, avoid repeated handling and multiple freeze/thaw cycles.

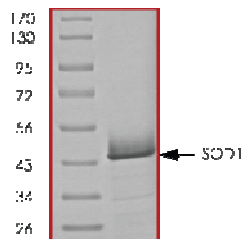
Scientific Background

SOD1 (superoxide dismutase 1) is the major soluble cytoplasmic enzyme responsible for destroying harmful free superoxide radicals in the body thereby providing defence against oxygen free-radical toxicity. Soluble cytoplasmic SOD1 is a copper- and zinc-containing enzyme and the SOD1 gene maps to chromosome 21q22 (1). Mutations in the SOD1 gene have been implicated to be the cause of familial amyotrophic lateral sclerosis, increased age-related muscle mass loss, early development of cataracts, macular degeneration, thymic involution, hepatocellular carcinoma, and shortened lifespan (2).

References

1. Sherman, L. et al: Nucleotide sequence and expression of human chromosome 21-encoded superoxide dismutase mRNA. Proc. Nat. Acad. Sci. 80: 5465-5469, 1983.
2. Al-Chalabi, Ammar, Recent advances in amyotrophic lateral sclerosis". Current Opinion in Neurology, 2000, 13 (4): 397-405.

Purity



The purity of SOD1 was determined to be **>90%** by densitometry. Approx. MW **45kDa**.

SOD1 Protein

Full-length recombinant protein expressed in E. coli cells

Catalog Number **S26-30G**

Specific Lot Number **V227-1**

Purity	>90%
Concentration	0.2 µg/µl
Stability	1yr At -70°C from date of shipment
Storage & Shipping	Store product at -70°C. For optimal storage, aliquot target into smaller quantities after centrifugation and store at recommended temperature. For most favorable performance, avoid repeated handling and multiple freeze/thaw cycles. Product shipped on dry ice.

To place your order, please contact us by phone 1-(604)-232-4600, fax 1-604-232-4601 or by email: orders@signalchem.com
www.signalchem.com

FOR IN VITRO RESEARCH PURPOSES ONLY. NOT INTENDED FOR USE IN HUMAN OR ANIMALS.